

SIRKALI LOCAL PLANNING AREA

49. Kavilancheri Village ✓
Comprising S.F.Nos 1 to 296

Use Zone	S.F.Nos
Residential	MR Nil
	PR 123, 187, 193, 200, 209, 210, 212 to 216, 218pt, 242 to 244, 246
Commercial	Nil
Industrial	Nil
Educational	Nil
Public and Semi Public	Nil
Agriculture	2 to 4, 6, 7, 9 to 12, 14, 15, 18 to 20, 22, 24, 27, 28, 178, 179, 184 to 186, 188 to 190, 194 to 196, 201 to 204, 206, 208, 217, 218pt, 220, 222, 225 to 231, 233, 235 to 241, 247, 249 to 252, 255 to 260, 262, 263, 265, 267, 271 to 274, 276 to 279, 281, 283, 285, 291 to 294, 296
Water Bodies	1, 5, 8, 13, 16, 17, 21, 23, 25, 26, 161, 175, 176, 177, 180, 181, 182, 191, 192, 197 to 199, 205, 207, 211, 219, 221, 223, 224, 232, 234, 245, 248, 253, 254, 261, 264
Transportation	266, 268 to 270, 275
Ex. Road	280, 282, 284, 286 to 290, 295
Inner Ring Road	Nil
DD Plan - 9	29 to 99, 116 to 122, 124 to 134
DD Plan - 10	100 to 115, 135 to 160, 162 to 174, 183

V.No. 50. Sirkali Village ✓
 Comprising S.F. No. 1 to 67, 69 to 416, 417pt, 418 to 460

Use Zone	S.F.Nos
Residential	
MR	391pt, 392pt, 393, 394pt, 405pt, 406pt, 408pt, 409pt, 412pt, 414pt, 417pt, 418pt, 422pt, 423pt, 452
PR	55pt, 57 to 63, 131pt, 370, 371, 373, 374, 376, 377pt, 378, 379pt, 380, 434, 436, 437, 440
Commercial	379pt, 385pt, 394pt, 405pt, 406pt, 408pt, 412pt, 414pt, 418pt, 422pt, 423pt, 447 to 449, 455pt, 460pt
Industrial	361, 365, 379pt, 383pt, 385pt, 386pt
Educational	422pt, 423pt
Public and Semi Public	377pt, 388, 390pt, 391pt, 394pt, 405pt, 422pt, 423pt, 443, 444, 451, 457, 458
Agriculture	2 to 6, 8, 9, 11, 13 to 17, 19 to 21, 27, 28, 31 to 34, 36 to 42, 44 to 47, 49, 50, 52 to 54, 55pt, 56, 128, 131pt, 133, 145, 146, 151, 362 to 364, 367, 369, 372, 409pt, 432, 439
Water Bodies	7, 10, 12, 18, 29, 30, 35, 43, 48, 51, 124 to 127, 132, 134 to 144, 147 to 150, 152, 153, 368, 375, 386pt, 387, 390pt, 392pt, 431, 433, 435, 441, 442, 445, 446, 453, 454, 456, 459

Transportation	1, 64, 389, 395, 404, 407, 410, 411, 413, 415,
Ex. Road	416, 419 to 421, 438, 450
Inner Ring Road	383pt, 377pt, 386pt, 455pt, 460pt
DD Plan No. 1	22 to 26, 79 to 121, 129, 130
DD Plan No. 2	65 to 67, 69 to 78, 122, 123, 188, 210 to 216
DD Plan No. 3	154 to 187, 189 to 203, 207 to 209, 217, 293 to 301, 319 to 325
DD Plan No. 4	290 to 292, 302 to 318, 326 to 342, 345 to 360, 366, 381, 382
DD Plan No. 5	204 to 206, 218 to 255, 282 to 289
DD Plan No. 6	256 to 281, 343, 344, 384, 396 to 402
DD Plan No. 7	403, 424 to 430

50/1. Konathalapadi Village
Comprising S.F.Nos 68, 461 to 477

Use Zone	S.F.No
DD Plan No. 2	68
DD Plan No. 7	461 to 477

50/2. Mookasathotham Village
Comprising S.F.No: 417pt

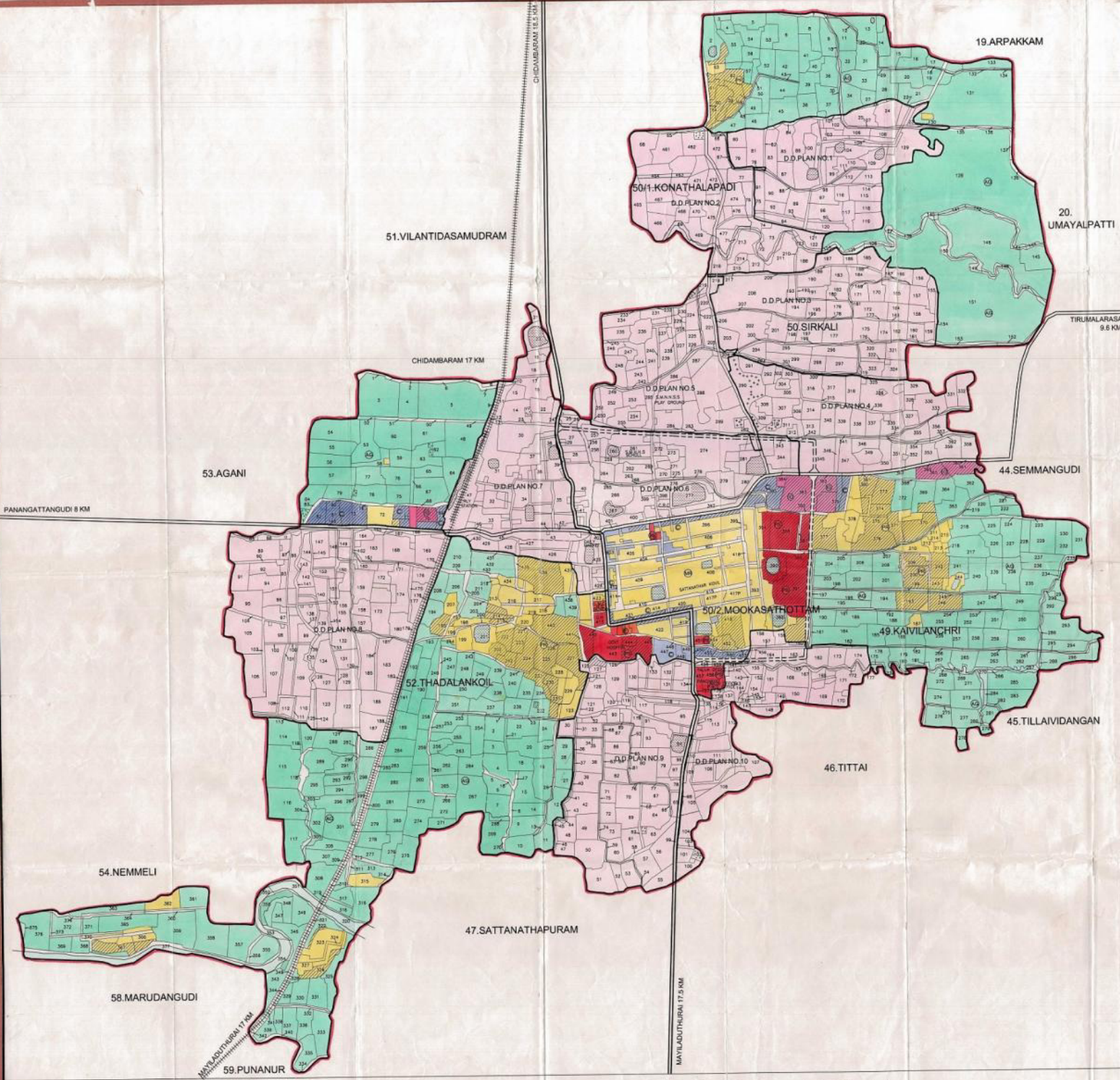
Use Zone	S.F.Nos
Residential	
MR	417pt

52. Thadalan Koil Village
Comprising S.F.No: 1 to 377

Use Zone	S.F.Nos
Residential	
MR	Nil
PR	71pt, 72, 195, 197 to 199, 201pt, 202, 207, 212 to 223, 224pt, <u>225 to 231</u> , 232pt, 233, 242, 315, 323, 325pt, 326, 327, 362, 366, 367, 368pt
Commercial	69, 70pt, 71pt, 73, 81, 82
Industrial	70pt, 71pt
Educational	Nil
Public and Semi Public	Nil
Agriculture	3 to 5, 8, 48, 53 to 65, <u>67</u> , 75 to 79, 84, 114 to 117, 120, 189 to 194, 203, 206, 208, 210, 211, 224pt, 232pt, 234 to 240, 244, 246 to 251, 253 to 256, 258 to 260, 262 to 265, 267, 269, 271 to 284, 286, 288, 289, 291, 293 to 296, 298, 299, 301 to 303, 306 to 308, 310, 313, 316 to 318, 322, 325pt, 328 to 331, 333, 335 to 339, 343, 346 to 350, 355, 357 to 359, 361, 363, 365, 368pt, 369, 371, 372, 376
Water Bodies	1, 2, 67, 49 to 52, 66, 68, 74, 80, 83, 118, 119, 196, 201pt, 204, 205, 209, 241 243, 245, 252, 257, 261, 266, 268, 270, 287, 290, 292, 297, 304, 305, 311, 312, 314, 320, 332, 334, 340, 351 to 354, 356, 356, 360, 364, 370, 373 to 375, 377

Transportation	
Ex. Road	200, 324
Railway Line	285, 300, 309, 319, 321, 341, 342, 344, 345
Inner Ring Road	Nil
DD Plan - 6	24 to 29, 39 to 41
DD Plan - 7	9 to 23, 30 to 38, 42 to 47 ✓
DD Plan - 8	85 to 113, 121 to 188

PROPOSED LAND USE - 2011



LEGEND

	LOCAL PLANNING AREA BOUNDARY		
	VILLAGE BOUNDARY		
	NATIONAL HIGHWAYS		
	DISTRICT ROADS		
	MUNICIPAL ROADS		
	RAILWAY LINE (M.G.)		
	WATER BODIES		
	D.D.PLAN AREA		
	PROPOSED ROAD		

EXISTING	PROPOSED



 MEMBER SECRETARY SIRKALI LOCAL PLANNING AUTHORITY	 DEPUTY DIRECTOR OF TOWN AND COUNTRY PLANNING TRICHIRAPPALLI REGION
 DEPUTY DIRECTOR OF TOWN AND COUNTRY PLANNING M.P. DIVISION	 ADDITIONAL DIRECTOR OF TOWN AND COUNTRY PLANNING
 DIRECTOR OF TOWN AND COUNTRY PLANNING	

SECRETARY TO GOVERNMENT
 HOUSING AND URBAN DEVELOPMENT DEPARTMENT

DIRECTORATE OF TOWN AND COUNTRY PLANNING
 TRICHIRAPPALLI REGION
 GOVERNMENT OF TAMILNADU



SIRKALI LOCAL PLANNING AREA