

1.	2.	3.	4.
		14	1277 to 1298, 1301, *1302 to 1311, 1322pt, 1342.
PK-2	2	18	1997 to 2181, 2188 to 2279, 2283 to 2417, 2419 to 2422
		19	2425 to 2433
		20	2476 to 2514
		21	2534 to 2542, 2544 to 2566, 2568 to 2581, 2582 to 2607, 2609 to 2617 2619 to 2636, 2638, 2640 to 2650 2652 to 2673, 2675 to 2768, 2770 to 2782, 2784 to 2793, 2795 to 2807, 2809 to 2822, 2824 to 2833.
		23	2918, 2920 to 2938
		24	2950 to 2958, 2961, 2992 to 2998 3000pt, 3004 to 3039.
		25	3041 to 3059, 3060 to 3071 3074 to 3452 3076, 3077
		27	3155 to 3171, 3173 to 3204, 3207 to 3215, 3219 to 3241, 3243 to 3256, 3258 to 3265
		28.	3268 to 3286, 3288 to 3307, 3309 to 3316, 3318 to 3326, 3328 to 3343 3345 to 3364, 3366 to 3368, 3372 to 3377
		29.	3379 to 3393, 3395 to 3412 3413 to 3423
		30.	3425 to 3428, 3430 to 3441
		31	3443 to 3465
		32	3487 to 3500, 3502 to 3528, 33 3530 to 3556, 3558 to 3586, 3588 to 3591
		33	3593 to 3627, 3629 to 3680, 3682 to 3700, 3702, 3704 to 3721 3723 to 3740, 3742, 3744 to 3759.
		34	3762pt, 3763 to 3765 3766, 3767pt 3768 to 3781, 3782, 3783, 3784pt 3785, 3786pt
		35.	3787 to 3796, 3799, 3801 to 3856

TWINCORN LOCAL PLANNING AREA

USE ZONE I(b)

MIXED RESIDENTIAL USE ZONE (MR)

Zoning 1.	Ward 2.	Block 3.	Town Survey No. 4.
MR 1	1	1	168
		2	241 to 264, 306 to 307
		4	824 to 831, 833 to 844, 892pt 1039, 1040
		9	1128, 1139pt 1140
		10	1147 to 1150, 1153, 1154pt, 1155pt
MR 2	2	2	33,34
		3	39pt, 49pt, 50pt
		4	51 to 66, 68 to 88
		5	91, 98pt, 100, 110, 112 to 122, 124 to 134
		6	137, 138, 140 to 146, 148, 149 151, 152, 154 to 163, 165 to 180, 182 to 186, 188 to 197, 199 to 210, 212 to 222, 224 to 226.
		7	229 to 243, 245 to 261, 262pt 263pt, 264 to 272, 273, 274 to 277, 278pt, 279, 280pt, 281 to 283.
		8	289 to 298, 299 to 304, 305 pt 307pt, 308 to 323, 324
		9	330 to 332
		10.	340 to 372, 374 to 439, 441 to 498, 501, 503 to 515, 517 to 596, 598 to 623, 624, 626 to 638, 640 to 656, 658 to 670, 672 to 709, 710, 712 to 759, 761 to 768.
		11	771 to 811, 816 to 863, 865 to 875, 877 to 969 972 to 1017, 1019 to 1060.
		12	1063 to 1067, 1069 to 1097, 1099, 1101 to 1139, 1141 to 1151, 1153 to 1173, 1175 to 1181, 1183 to 1196, 1198 to 1219, 1221 to 1236
		13	1238 to 1243, 1245 to 1251, 1253 to 1262, 1264 to 1268, 1270 to 1276.

1.	2.	3.	4.
MR 2	2	36	3858 to 3944, 3946 to 3977
		37	3978, 3995, 3994, 3996
		38	4002 to 4013, 4016, 4032 to 4040 4043 to 4046, 4062 40 to 4080
		39	4075
MR 3	3	3	236pt, 274 to 277, 281 to 285, 289P 293 294 P
		5	551 to 586, 588 to 596, 598 to 650.
		6	652 to 737, 740 to 816, 817 to 857, 868 to 897, 900 to 948, 951 to 997, 999 to 1088, 1089, 1090 to 1118
		7	1119, 1120pt, 1122 to 1126 1127pt, 1128 to 1132, 1133 pt, 1134pt, 1135 to 1143, 1145 to 1148
MR 4	4	1	2 to 14, 15, 16 to 21, 22, 24 to 49, 50 to 59, 60 to 115, 118, 119 to 126, 128 to 137, 139 to 219.
		2	221 to 293, 295 to 364, 366 to 406, 408 to 475, 477 to 533, 535 to 551, 553 to 629, 631 to 725
		3	728 to 783, 786 to 790, 792 to 843, 845 to 864, 865 to 930, 932 to 965, 967, 1008, 1010 to 1033, 1035 to 1050
		4	1053.
		5	1057 to 1121, 1122 to 1128, 1130 to 1147, 1149 to 1190
		6	1192 to 1219, 1221 to 1243, 1245 to 1294, 1296 to 1344, 1346 to 1358, 1360 to 1407, 1409 to 1478,
		7	1480 to 1549, 1551 to 1554, 1556 to 1573,
		8	1575 to 1584, 1587 to 1593, 1596 to 1605, 1607 to 1620
		9	1622, 1623, 1625 to 1686, 1689 to 1751, 1753 to 1877
		10	1879, 2008 to 2016, 2125 to 2150,
		11	2154 to 2190, 2192 to 2315
		12	2317 to 2353, 2355 to 2365, 2367 2368, 2370, 2372 to 2400, 2402 to 2460

1.	2.	3.	4.
MR 4	4	13	2500 to 2503, 2508 to 2513
		14	2788, 2790 to 2820, 2923 to 2927 2929 to 2959, 2961 to 2966
		15	2969 to 2980, 2982 to 2999, 3001 to 3045, 3047 to 3049, 3067 to 3096
		21	3466, 3470 to 3474
		24	3551, 3553 to 3566, 3568 to 3579 3581 to 3587, 3600 to 3613, 3615 to 3629
		25	3631, 3633 to 3646, 3650 to 3665 3667 to 3685
		26	3686 to 3702, 3705 to ⁷ 3812, ⁷ 3814 to 3725, 3727 to 3732, 3734 to 3741 3743 to 3751
		27	3753 to 3760, 3762 to 3768, 3770 to 3793, 3796 to 3801
Mr 5	5	1	3pt, 4pt 5, 6 to 12, 14, 15, 17 20, 21pt 22, 23, 24pt 25 to 35
		2	36 to 68, 69pt, 70 to 75, 77 to 114 115pt, 117 to 128, 129pt 130 to 138
		3	139, 143 to 185, 188 to 192, 193pt 194pt, 195pt 196pt, 197pt 198pt 202pt 203 to 248, 251 to 279, 281 to 303, 305 to 346, 347pt 348 350 to 352, 353pt 354pt, 355, 356pt
MR 5	5	5	867pt, 868pt, 869pt, 870pt, 878pt 879 to 881, 882pt, 883 to 903, 905 to 907, 909 to 930 931pt, 943pt, 944pt, 945pt, 951pt 952pt, 953 to 975, 977 to 979, 982 984, to 1008, 1012 to 1039
		6	1042 to 1126, 1128 to 1174, 1176 1178 to 1209, 1211 to 1247, 1249 to 1300, 1302 to 1362, 1364 to 1393 1394 to 1396, 1398, 1399, 1401 to 1445
		7	1449 to 1455, 1457 to 1465, 1468 to 1514, 1521 to 1582, 1584 to 1598, 1599, 1601 to 1609, 1612 to 1617, 1619 to 1628, 1631 to 1643, 1645 to 1651, 1653 to 1670, 1672 to 1680, 1682 to 1720, 1723 to 1726, 1728 to 1815, 1817 to 1836, 1838 to 1867, 1868 to 1879, 1881 to 1885
		8	1887 to 1897, 1899 to 1912, 1913pt 1914pt, 1915pt, 1916pt, 1917pt, 1918 1920 to 1935, 1936pt.,

1.	2.	3.	4.
MR 6	6	7	618
		8	632 to 654
		13	1467pt, 1468pt, 1469pt, 1470pt, 1471, 1472, 1473pt, 1474pt, 1531pt, 1532pt, 1533pt, 1535pt, 1536pt, 1540 to 1548, 1549pt, 1550pt, 1551 to 1599, 1601 to 1657, 1659 to 1670, 1672pt, 1673 to 1680, 1682, to 1685, 1686pt, 1698pt, 1700pt, 1708pt, 1709 to 1725
	6	14	1727 to 1734, 1735pt 1740, 1741pt 1742pt, 1743pt, 1744 to 1746, 1747pt, 1751 to 1755, 1757 to 1805 1807 to 1816
MR 7	8	2	112pt, 113 to 129, 131 to 171, 172pt, 173pt, 176pt, 173pt, 177pt 178 to 194, 195pt, 198pt, 199, 200pt 201pt, 202pt, 203pt, 204pt, 205pt 206pt, 207pt, 208pt, 209 to 243
MR 8	B	6	2, 6, 9, 11 to 26, 28 to 59
		7	2, 3, 5, 7 to 11, 13 to 15, 17 to 20, 22, 25 to 27
		8	2 to 9, 11, 15 to 18, 21 to 30 33 to 38, 41
		9	3, 5, 6, 13 to 24, 26 to 35
		10	2, 4 to 17, 19, 20, 21, 23, 24, 26, 29 to 42, 44 to 55, 57 to 65
		11	1 to 13, 15 to 27, 30 to 36, 40 to 49, 71 to 90
		12	5, 8 to 31, 33 to 56, 59, 63 to 86, 88 to 113
		13	8 to 16, 17pt, 18pt, 23pt 32 to 47, 48pt, 49pt, 50pt
MR 9	C	1	2 to 19
		2	1, 5 to 24, 26 to 35
		3	2 to 17, 19 to 36, 38 to 52, 55 to 72, 74, 89, 91 to 108 110 to 125, 127 to 145
		4	2, 4 to 17, 20 to 28, 31 to 37, 39 to 45
		5	2 to 8, 10 to 23, 24 to 30, 32 to 40, 42 to 62, 64 to 72 74 to 98
		6	2 to 17, 19 to 36, 38 to 53 55 to 64

1	2	3	4
MR 9	0	7	2 to 11, 13 to 21, 23 to 31 33 to 45, 47 to 57
		8	2 to 55, 56 to 60, 62 to 79 81 to 94
		9	2 to 10, 12 to 25, 27 to 35, 37 to 54, 56 to 60, 62 to 79 81 to 94
		10	2, 4, 6 to 22, 24 to 37, 38 to 50 52 to 60, 62 to 71, 73 to 90
		11	2 to 11, 13 to 22, 24 to 33, 35 to 59, 61 to 99
		12	1pt 2 to 30, 32, 33, 34, 35
		13	2 to 11, 13 to 30, 32 to 40, 41 43, 44
		14	1 to 40, 42 to 48, 50 to 58, 60 to 64, 66, 68, 69
		15	1 to 4, 5pt, 6pt, 8 to 19, 20pt, 21, 34pt, 36 to 41, 52 to 57, 59 to 62, 69 to 73, 75, 76, 77pt, 79, 80.
		16	2 to 37, 39, 40
		19	2 to 5
		20	1 to 15, 17 to 28
		21	1 to 8, 10 to 17, 20 to 33
		22	1 to 15
		23	1, 2, 4 to 30, 32 to 38
		24	1, 2, 4, 5, 8 to 14
		25	1 to 3, 5 to 7
		26	1 to 36, 40, 42, 44 to 49, 51 to 64 66 to 85
		27	3 to 20, 22, 23, 25 to 36, 39 to 67,
		28	2 to 18, 20 to 33
		29	3 to 10, 12 to 19
		30	2 to 6, 8, 9, 12 to 14, 15, 16, 18 to 31, 35pt, 36, 37, 41pt, 39p, 40p.
		31	1 to 8, 9pt, 10pt, 11 to 13, 15
		33	2 to 5, 7 to 14, 16 to 23, 25 to 32, 34 to 41, 43 to 50, 52 to 59, 61 to 69, 71, 72

1	2	3	4
MR 9	C	34	1, 3 to 12, 14 yo 21 to 39, 41, 43 to 51, 53 to 65, 67 79.
		35	2 to 16, 18 to 30, 32 to 45, 46 to 50. 52 to 54, 56, 59 to 69, * 71 to 91.
		36	3 to 18, 20 to 34, 36 to 52, 54 to 84, 86 to 111, 114 to 117
		37	3, 4
		38	1 to 15
		39	2 to 9, 11 to 20
		40	2 to 11, 13 to 21, 22pt, 23, 25to 31, 32 to 35, 36pt, 38. pt, 56pt, 63 to 65, 67 to 80 82 to 121
		41	1 to 9, 12 to 28, 30 to 46, 49 to 60, 62 64 to 75, 78 to 114,
		42	1 to 25.
		43	8 to 14, 16 to 28, 30 to 42, 44 to 47, 49, 51 to 72, 74 to 88, 90
		<u>44</u>	22 to 19, 21, 23 to 29, 31 to 47. 49 to 59, 61 to 73, 75 to 86, 88 to 97, 99 to 101, 103 to 116, 118, 120 to 133, 135 to 140, 141 to 148, 150 to 157.
		46	1 to 17, 19 to 28, 30 to 38, ⁴ 40 to 53
		47	1 to 24, 26 to 37, 39 to 42, 46 to 60, 62 to 74
		*	
		50	3, 6
		51	1, 2, 3, 5 to 7, 9 to 16, 18 to 25 27 to 31
		55	2 to 13, 13 to 22, 24 to 30
		56	7 to 15
		57	3 to 20
		58	1 to 18, 21 to 40
		59	1 to 17, 20 to 17
		60	2 to 14, 16, 18, 20
		* 48	1 to 12, 14 to 27, 29 to 48
		49	2 to 11, 13 to 29, 32, 33, 35 to 44, 46 to 60, 62

1	2	3	4
MR 9	C	61	8 to 18, 1,3,4,6
		62	2 to 4, 6,7 to 20, 22 to 34 37 to 39, 41 to 54, 56 to 69,
		63	2 to 15, 17 to 28
		64	1 to 9
		65	2 to 7, 9 to 14, 16 to 21.
		66	1,2,3, 4 to 19, 21 to 28, 30 to 37, 40 to 56, 58 to 70.
		67	2 to 29, 31 to 38, 40 to 47, 49 to 56, 58 to 65, 67 to 112, 114 to 128, 130 to 148
		68	1 to 24, 26 to 73, 75 to 98, 100 to 123.
		69	1 to 20, 22 to 41, 43 to 62 65 to 76.
		70	*1*2*3*4*5*6*7*8*9*10*11*12*13*14*15*16*17*18*19*20*21*22*23*24*25*26*27*28*29*30*31*32*33*34*35*36*37*38*39*40*41*42*43*44*45*46*47*48*49*50*51*52*53*54*55*56*57*58*59*60*61*62*
		70	1 to 24, 26 to 49, 51 to 74, 76 to 96.
		71	1 to 20, 22 to 39, 42 to 54, 56 to 71
		72	2 to 27, 29
		73	1 to 11, 13 to 26, 28 to 37, 39 to 50, 52 to 62, 64 to 77, 79.
		74	1 to 15, 17 to 28, 30 to 42, 44 to 50, 52 to 60, 62 to 75.
		75	1 to 9, 11 to 21, 23 to 26, 28 to 40, 42 to 55, 57 to 70, 72.
		76	1 to 24, 26 to 36, 38 to 47, 49 to 58, to 69, 71 to 80.
		77	1 to 11, 13 to 23, 25 to 48, 50 to 73, 75 to 86, 88 to 125, 127 to 136, 138 to 143, 145 to 149, 151 to 161
		78	1 to 17, 19 to 33, 35 to 49, 51 to 72, 75 to 104, 106 to 116, 118 to 127, 129 to 155.
		79	1 to 22, 24 to 44, 46 to 61, 63 to 85, 87 to 127.
		80	1 to 23, 25 to 44, 46 to 68,
		81	70 to 91, 93 to 115, 117 to 140, 1, 3, to 8, 10 to 15, 17 to 22, 24 to 29, 32 to 59, 61, 63 to 74
		82	2 to 27, 29 to 41
		83	1 to 10, 11p, 12p

USE ZONE II COMMERCIAL USE ZONE (C)

Zone 1.	Ward 2.	Block 3.	Town survey Numbers 4.		
C1	1	1	1,2,3		
		2	230 to 239		
		3	572pt, 582pt, 583pt, 584pt to 587 588pt, 589 to 592, 593pt, 625pt, 626, 627pt, 644pt, 645pt, 721pt 734pt, 734pt, 739pt, 740pt, 742pt		
		4	810 to 819, 821 to 823		
		8	1122pt		
		9	1128pt, 1129 to 1132		
		10	1151, 1152		
		C2	2	1	1 to 11, 13 to 22, 24 to 26
				2	29, 30, 32
				3	35, 44, 47, 48
5	90, 92 to 94, 96, 98pt				
7	262pt, 263pt, 284 to 286				
8	288, 305pt, 306, 307pt, 325 to 329				
9	334, 339				
14	1300, 1311 to 1321, 1322pt, 1323 to 1339, 1340pt, 1341pt.				
15	1344 to 1354, 1355 to 1364, 1365pt, 1372pt, 1373pt, 1366pt, 1367pt 1368pt, 1369pt, 1370pt, 1392pt, 1398pt, 1399, 1401, 1393 to 1397				
16	1404 to 1481, 1487 to 1501, 1504 to 1517, 1519 to 1562, 1565 to 1632.				
17	1636, 1638 to 1745, 1749 to 1871 1873, to 1995				
20	2435 to 2474, 2516 to 2532				
23	2914 to 2916, 2919				
24	2943 to 2949, 2971 2999				
37	3979, 3980, 3983 to 3990, 3998,				
38	4000, 4017 to 4031, 4047 to 4061 4081, 4083 to 4087				
39	4075, 4076, 4077				

1.	2.	3.	4.
C3	3	1	2, 6 to 78
		2	85 to 102, 104 to 127, 130 to 139 141, 142, 145 to 167
		3	169 to 202, 204 to 218, 220 to 235 236pt, 237 to 239, 240 to 273, 278 to 280, 286 to 288, 289pt, 290 to 292, 294pt
		4	297 to 308, 310 to 438, 440, 442 to 2
		5	468 to 549
		7	1133pt, 1134pt
C4	4	10	1883 to 1893, 1895 to 1932, 1934 to 1937, 1939, 1941 to 2005, 2007 to 2023, 2025 to 2033, 2035 to 2103, 2105 to 2119, 2121 to 2124
		13	2495 to 2499, 2514 to 2518, 2520 to 2532
		14	2534 to 2600, 2608 to 2663, 2665 to 2759, 2821 to 2867, 2869 to 2922
		16	3107 to 3118, 3122pt, 3123, 3125 to 3132, 3148pt, 3149 to 3152, 3153pt 3158 to 3160, 3161pt, 3162, 3163pt 3166 to 3172, 3188pt, 3189 to 3192
		17	3212 to 3265, 3267 to 3288, 3289pt, 3291, 3293 to 3325, 3327, 3328, 3330, 3332, 3335 to 3338, 3340
		19	3356 pt, 3357pt
		20	3369 to 3370, 3372 to 3389, 3390 3397 to 3420
		21	3440, 3441pt, 3465pt, 3467pt
		22	3475, 3476, 3477, 3479, 3481, 3482 3498 to 3515,
		23	3534pt, 3517 to 3530
C5	8	1	1 to 20
		2	29 to 43, 45 to 57, 59 to 104, 106 to 111, 319 to 370, 371pt 372 to 409, 410pt, 412pt, 468 to 473
		4	714 to 756pt, 757 to 778

1.	2.	3.	4.
06	B	7	30 to 42
		12	1
		13	19 to 24, 26 to 30, 48pt, 49pt 50pt, 51pt, 53 to 56
		14	3
		22	2, 6 to 19
		23	2 to 22
07	C	30	32 to 34, 35pt, 36pt, 39pt, 40pt 41pt, 43
		31	9pt, 10pt, 17 to 29
		32	1, 4 to 11, 17 to 23
		40	36pt, 22pt, 37, 38pt, 39 to 55 56pt, 57, 58, 60, 61
		43	1 to 7
		56	2 to 6

USE ZONE III (a) CONTROLLED INDUSTRIAL ZONE (IC)

Zoning	Ward	Block	Town survey No.		
IC 1	2	14	1299 1340pt		
		15	1365pt 1366pt 1367pt 1368pt 1369pt 1370pt 1371pt 1377pt 1380 to 1391 1392pt		
		16	1486		
		23	2883 to 2898 2900 to 2913		
		24	3553 to 3586		
IC 2	4	13	2461 to 2494 2504 to 2506		
		20	3429 3364 to 3368 3390 to 3395 3423 to 3431 3433 to 3436		
		21	3439 3445 3446 3449 3450 3441pt 3453 3438pt 3461pt 3462 to 3464		
		22	3480, 3486 to 3496		
		24	3553 to 3586		
		IC 3	B	9	3pt 5 to 8 11pt
				13	1 to 7 17pt 18pt 57 to 99 101
15	1 to 17 29 to 26 28 to 35				
16	1 to 4				
17	2 to 22				
18	1 to 3 5 to 27				
19	1 to 48 50 to 70				
20	1 to 31, 33 to 56				
21	1 to 23, 25 to 57				
24	2 to 47				
25	2 to 56				
IC 4	C	26	3 to 30		
		27	14 to 27 30 to 42		
		32	2, 3 12 to 16		
		42	28 to 49		
		49	1146		
IC 5	1	12	1146		

US E ZONE IV EDUCATIONAL USE ZONE (E)

zoning	Ward	Block	Town survey No.
E1	1	9	1126
E2	2	3	36Pt 38 39Pt 50Pt
		24	2941 3003 3000 3001 3002
E3	4	21	3461Pt
E4	8	4	779 to 815, 818to 829, 830pt 831pt 832 to 842 843pt 844pt
E5	0	18	1
		45	1 to 4
		50	8 to 13 16 to 27 29 30
		51	32
		53	1,2,3
		54	1,3,4,5

USE ZONE V PUBLIC AND SEMI PUBLIC USE ZONE (PS)

-----			-----		
Zoning ward	Block		Town survey No.		
-----			-----		
PS 1	0	1	3 to 8		
PS 2	2	14	1341Pt ✓		
		22	2881		
		31	3466 to 3482		
		32	3484	3485	3486
PS 3	3	1	82		
		2	128		
PS 4	4	14	2954 to 2959 2879 2880		
		15	3050 to 3068 ✓		
		19	3350 to 3355	3362Pt	
PS 5	7	21	3467Pt 3468		
		1	1 to 8		
		2	9pt 10pt		
		4	18, 19		
PS 6	8	1	24Pt		
		2	27		
PS 7	0	16	41		

USE ZONE VI AGRICULTURAL USE ZONE (AG)

Zoning	Ward	Block	Town survey No.
AG1	1	10	1154Pt 1155Pt 1159Pt
		7	1113, 1114
AG2	2	3	41,42,43, 49Pt 50Pt
		21	2834
		22	2875 to 2880
AG 3	B	5	1 to 6 8 to 15 18,21 to 36
			38 to 44 45
		9	8 to 11
AG 4	C	1	20
		2	36
		18	1pt 31 36
		15	5pt 6pt 20pt 21 to 33 34pt
			42 to 51 63 to 67 77pt 81 to 83
			1 to 11, 14
			6
			4,8
			1,2
			1
	26, 27		

BUCKLE CHANNEL

Zoning	Ward	Block	Town Survey No.
	4	1	1
		7	1555
		8	1606
		10	1882 1938
		21	3447, 3448, 3451, 3454, 3456 to 3458
		22	3480 3484 to 3496
	5	1	1, 2
		8	1937
	6	7	617
		8	626
		14	1749

DEVELOPMENT RESTRICTED ZONE

TUTICORIN LOCAL PLANNING AUTHORITY - TUTICORIN MUNICIPALITY

500 M Zone

Area where developments allowed as per G.O.MS.No.11
Environmental Control Department Dete 8.3.84 and G.O.Ms.No.112
Municipal Administrative and water supply Department Dt. 23.1.86

Ward	Block	T.S. Nos.
1	1	5 7 to 12 110 to 122 124 to 167
1	2	205 to 240 265 to 304 370 to 446
1	4	870 to 891 892 Pt
1	5	894 to 1038
1	7	1112 1113
1	8	1117 to 1120
1	9	1132 to 1138 1139pt
5	3	142pt 193pt 194pt 195pt 196pt 197pt 198pt 199 to 201 202 pt 347pt 353 pt 354pt 356 Pt 357 to 391
5	4	392 to 837 838pt 844pt 845pt 847pt 849pt 850pt 851pt 839 to 843
5	5	852 to 866 867pt 868pt 869 ⁹ pt 870pt 871 to 877 878 pt 882 Pt 881pt 931pt 932to942 943pt 944pt 945pt 946 to 950 951 pt 952pt
6	1	1 to 239
6	3	279 to 443
6	5	538 539 541 to 545
6	6	546 to 616
6	7	617 620 621 622pt 618 625 626
6	8	627 628 656
6	9	659 to 747
6	10	748 to 989

1.	2.	3.
6	11	990 to 1205
	12	1206 to 1466
	13	1467pt 1468Pt 1469Pt 1470Pt 1473pt 1474 to 1530 1531Pt 1532pt 1533 Pt 1535pt 1536 pt 1549pt 1550 to 1671 1672pt 1686pt 1687 to 1697 1698pt 1699 1700 1701 to 1707 1708 pt
	14	1747pt 1743pt 1741pt 1742pt 1735pt 1736 to 1739
8	12	112pt 172pt 173pt 174 175 176 177pt 195pt 196 197 198 200 201pt 202pt 203 pt 204pt 205pt 206pt 207pt 208pt 244 245 288 to 370 372 373 pt 409pt 410pt 468 to 475
D	1	4pt 5
	2	2
Schem ^e D 4	49	5846pt 5847 5850 5851 5852pt 5853pt 5861pt 5862pt 5906pt
	50	5907 to 5910
	51	5911 to 6006
	52	6007 to 6105
	1	4pt 13 to 109 168 to 204
	2	241 to 264 306 to 308 311 to 369 447 to 480 482 to 514
	3	516 to 571 572 pt 573 to 581 582pt 583pt 588pt 593pt 594 to 624 625pt 627pt 628*622 633pt 634 to 643 644pt 645pt 646 to 719 721 pt 720pt 722 to 733 734 pt 735 to 739pt 738, 739pt 740pt 742pt 743 to 807
	4	808pt 809 846 to 864
	5	1039 1041
	6	1042 to 1108
	7	1114 to 1116
	8	1122pt 1123pt

1.	2.	3.
6	5	536 537 540
6	7	619 623 624 622pt
7	4	18 to 148
7	5	172 to 251
7	6	301 to 435
8	2	246 to 287 371pt 410pt 411 412pt 413 to 420 421pt 422 to 467
8	3	476 to 713
6	2	7 240 to 278
1	4	810 to 845 865 to 869
1	9	1127pt
6	4	444 to 535
6	8	629 to 655 657 658
8	4	714 to 772 773pt 774 775pt 830pt 831pt 843pt 844pt 845 to 858
1	1	1,2,3, 8pt
1	6	1105pt 1106, 1107
1	7	1109
7	2	9pt 10pt 11
7	3	12 to 17
7	4	149 to 161
7	5	164 to 171 253 to 300
D	1	3,4,pt
D	1	1pt 2pt 7,8
1	8	1121
1	9	1128 to 1131
D 4	49	5848, 5849
	53	6106 to 6188

Sd xxxxxxxxx
Executive Authority
Thoothukudi Local Planning Authority

Sd xxxxxxxxx
Deputy Director of Town and
Country Planning, Tirunelveli
Kanniyakumari Region
Tirunelveli.

TRANSPORTATION (EXG ROADS, STREETS, LANES ETC)

Ward No.	Block No.	Town survey numbers
1	1	4 6 13 35 99 109 123 148 204
	2	229 265 266 281 303 305 310 384 407 446 481 515
	3	588 633 720 741 807
	4	808 820 832 845 846 891
	5	394 895 896 903 929 958 994 1038 1041
	6	1042 1046 1093 1100 1103 1104 1105
	7	1110 1111
	8	1123 1124
	9	1125 1133 1134 1136 1142 1143 1144
	10	1156 1157 1158 1145
	1	1223, 1227
	2	28, 31
	3	37 40 46 45
	4	67 89
	5	95 97 99 111 123 135
6	136 139 147 150 153 164 181 187 198 211 223 227 228	
7	244 287 262 263P. 278p 289p 287	
9	333 335 to 338	
10	372 373 440 499 500 502 516 597 625 639 657 671 711 760 769	
11	770 812 to 814 815 864 876 970 971 1018 1061 1062	
12	1068 1098 1100 1140 1152 1174 1182 1197 1220	
13	1237 1244 1252 1263 1269	
15	1343 1375 1378 1379 1400 1399 1403	

1.	2.	3.
2	16	1482 1483 1484 1485 1502 1503 1563 1567 1633 1634 1635
	17	1637 1746 1747 1748 1872
	18	1996 2182 2183 2184 2185 2186 2280 2281 2418 2423
	19	2424 2434
	20	2475 2515
	21	2533, 2543 2567 2608 2618 2637 2639 2651 2769 2783 2794 2808 2823 2674 2872 to 2874 2673
	23	2882 2899 2917 2939 2940
	24	2942 2959 2960 2991 3040
	25	3072 3073
	26	3095 3123 3153 3154
	27	3172, 3205, 3206, 3218 3217 3216 3242 3257
	28	3266, 3267, 3287, 3308, 3317, 3327 3344, 3365, 3369, to 3371
	29	3378, 3394, 3424
	30	3429
	31	3442
	32	3483, 3501, 3529, 3557, 3587, 3592
	33	3625, 3681, 3701, 3703, 3722, 3741, 3743, 3760, 3761
	34	3762p, 3767p, 3784p, 3786p
	35	3797, 3798 3800
	36	3857 3945
	37	3981, 3982, 3991, 3999
	38	4078
3	1	1, 3 to 5, 79 to 81, 83, 84
	2	103, 140, 143, 144, 162
	3	168, 203, 219, 295
	4	296, 309, 439, 441, 466
	5	467, 550, 587, 597, 651

1.	2.	3.
3	6	738 739 783, 784 786 788 858, 859 899 949 950 998
	7	1120p, 1121, 1127p, 1133p, 1134p
5	1	3p, 4p, 13 16, 18, 19, 21p, 24p
	2	69p, 76, 115p, 116, 129
	3	140 to 142 186, 187 249 250, 280, 304, 347 349 391
	4	434, 440, 485, 546, 526, 527 603, 621, 674 732, 783 851
	5	904, 908 951 976, 980, 981, 983, 1009, 101 0 1011, 1040, 1041,
	6	1127, 1175, 1177, 1210, 1248, 1301 1363 1397, 1400
	7	1446 to 1448 1456, 1466, 1467, 1520, 1583 1600 1610 1611 1618, 1629 1630 1644 1652 1671, 1681 1721 1722 1727 1816, 1837 1886, 1880
	8	1898 1913p 1914p, 1915p, 1916p, 1917p 1919 1936p
6	1	1, 2, 13, 81, 82, 83, 150, 151, 192 193, 218, 219, 239
	2	272, 273, 278
	3	279, 281, 318, 327, 357, 393, 394, 406 412, 443
	4	444 530 534 535
	5	537 539 541 543
	6	546
	7	621, 622, 624, 625
	8	629
	9	674 675 689 690 702 724 726p
	10	817 823 884 952 953 989
	11	1026 1007, 1137, 1162,
	12	1206 1250 1280 1285 1299 1308 1341 1353, 1386 1397 1433 1434 1443 1452 1466
	13	1549 1550 1600 1658 1681
	14	1726 1739 1743 1748 1750 1756 1806

1.	2.	3.
7	4	35 to 38, 44, 73, 74, 95, 112, 127, 128 148 161
	5	163 172 226 262 , 252
	6	304, 381 345 402, 403, 421, 437
8	1	21, 22, 23, 25
	2	26, 28, 44, 55, 105, 130, 245, 288, 421 445, 474, 475
	3	479, 610, 611, 612, 680, 691, 713
	4	816, 817, 844, 858,
B	5	7, 16, 17, 19, 20, 37
	6	1, 3 to 5, 7, 8, 10, 27
	7	1, 4, 6, 12, 16, 21, 23, 24, 28, 29
	8	1, 10, 12, 14, 19, 20, 31, 32, 39, 40
	9	1, 2, 4, 7, 12, 25, 37, 36
	10	1, 3, 18, 22, 25, 27, 28, 43, 56, 66
	11	14, 28, 29, 37, to 39, 70, 91
	12	2 to 4, 6, 7, 32, 57, 58, 60, 61, 62, 87, 114, 115
	13	31, 40, 52, 100
	14	1, 2
	15	18, 27, 36
	17	1
	18	4
	19	49, 71
	20	32
	21	24
	22	1, 3, 4, 5, 20
	23	1, 23
	24	1
	25	1
	26	1, 2, 31, 32
	27	2, 3, 29, 43

1.	2.	3.
G	1	1
	2	2 to 4, 25
	3	1, 18, 37, 54, 73, 90, 109, 126 146
	4	1, 3, 18, 19, 29, 30, 38
	5	1, 9, 31, 41, 63, 73, 99
	6	1, 18, 37, 54, 65, 66
	7	1, 12, 22, 32, 46
	8	1, 20, 35, 52, 83, 104
	9	1, 11, 26, 36, 55, 61, 80, 95
	10	1, 3, 23, 51, 61, 72, 91
	11	1, 12, 23, 34, 60, 100
	13	1, 12, 31, 42, 45
	14	41, 49, 50, 65, 68, 70, 72
	15	7, 35, 58, 74, 78, 84
	16	1, 38, 42 to 48
	17	12, 13, 15
	18	2, 3
	19	1, 7, 8
	20	16, 29
	21	9, 18, 19
	22	16
	23	3, 31, 39
	24	3, 6, 7, 15
	26	37, to 39, 41, 50, 43, 65, 86
	27	1, 2, 21, 24, 37, 38
	28	1, 19, 34
	29	1, 2, 11, 20
	30	1, 7, 10, 11, 17, 38, 42, 44
	31	14, 30
	33	1, 6, 15, 24, 33, 42, 51, 60, 70, 73
	34	2, 13, 22, 30, 40, 42, 52, 66
	35	1, 17, 31, 51, 55, 57, 58, 70, 92, 93
	36	1, 2, 19, 35, 53, 85, 113, 118

2.	3.
39	10, 21
40	1, 12, 24, 50, 66, 81, 122, 123, 124
41	10, 11, 29, 47, 48, 61, 63, 76, 77,
42	50
43	15, 29, 43, 48, 50, 73
44	1, 20, 22, 30, 48, 60, 74, 87, 98, 117, 102 119, 134, 149
46	18, 29, 39
47	25, 38, 43, 44, 45, 61, 75, 76
48	13, 28, 49
49	1, 12, 30, 31, 34, 45, 61, 63
50	1, 2, 4, 5, 7, 14, 15, 28
51	4, 8, 17, 26
52	2, 3
53	4
54	2, 6
55	1, 14, 23, 31
56	1
57	1, 2, 21
58	19, 20, 41
59	18, 19, 38
60	1, 15, 17, 19, 21
61	2, 5, 7, 19
62	1, 5, 21, 35, 36, 40, 55, 70, 71
63	1, 16, 29
65	1, 8, 15, 22
66	20, 29, 38, 39, 57, 71
67	30, 39, 48, 57, 66, 113, 129, 149
68	25, 74, 99, 124
69	21, 42, 64, 63, 77
70	25, 50, 75, 97
71	21, 40, 41, 55, 72, 73
72	1, 28, 30
73	12, 27, 51, 78, 80, 38, 63

1.	2.	3.
C	74	16, 29, 43, 51, 61, 76, 77
	75	10, 22, 27, 41, 56, 71, 73, 74
	76	25, 37, 48, 59, 70, 81, 82
	77	12, 24, 49, 74, 87, 126, 137, 144, 150 162
	78	18, 34, 50, 74, 105, 117, 128, 73
	79	23, 45, 62, 86, 129, 130
	80	24, 45, 64, 92, 116, 141
	81	2, 9, 16, 23, 30, 31, 60, 62
	82	1, 28, 42
	83	11p, 12p
D	1	2
	2	1, 4, 5
4	1	116, 117, 127, 138, 220
	2	294, 365, 407, 476, 534, 552, 630 726, 727
	3	784, 785, 791, 844, 865, 931, 966, 1009 1034, 1051, 1052
	4	1054
	5	1055, 1056, 1129, 1148, 1191
	6	1220, 1244, 1295, 1345, 1359, 1408
	7	1550
	8	1574, 1585, 1586, 1594, 1595, 1621
	9	1624, 1687, 1688, 1752, 1878, 1880
	10	1881, 1894, 1933, 1940, 2006, 2024
	11	2152, 2153, 2191
	12	2316, 2354, 2366, 2369, 2371, 2401,
	13	2507, 2519
	14	2533, 2585, 2601, 2642, 2664, 2612 2823, 2868, 2960, 2967
	15	2968, 2981, 3000, 3046
	16	3097, 3187, 3124, 3193
	17	3194, 3207, 3266, 3290, 3292, 3326 3333, 3334, 3339

1.	2.	3.
4	18	3341, 3346
	19	3347 to 3349
	20	3367p 3371 3376 3422 3432 3437 3396
	21	3442 to 3444 3452, 3455 3465 3469
	22	3478, 3483, 3497
	23	3516, 3531, 3532, 3541
	24	3550, 3551, 3552, 3567, 3580, 3598 3599, 3630
	25	3632, 3647, to 3649, 3666
	26	3686, 3703, 3713, 3726, 3733, 3704, 3742 3752
	27	3761, 3769, 3775, 3794, 3795, 3802,

/TRUE COPY/

MEMBER SECRETARY,
Office of the
Theothukkudi Local Planning Authority
Theothukkudi-628003.

ANNEXURE II

SANCTIONED TOWN PLANNING SCHEMES

The following Town survey numbers are covered by the sanctioned Town planning schemes. The uses are permitted as per the scheme provisions.

T.P. Scheme	Ward	Block	T.S. No.
A Part I	4	28	All town survey numbers
		29	
		30	
		31	
D Part	4	32	All Town survey numbers
		to	
		52	
E Part	4	24	Town survey No 3459
Krishnarajapuram D.D Plan	A	All Block	All Town survey numbers
	B	1	-do-
		2	
		3	
		4	

ANNEXURE IV

TUTICORIN MASTER PLAN

LAND USE SCHEDULE

TUTICORIN TALUK - TUTICORIN PANCHAYAT UNION

1.Village : 4. Melathattapparai S.No.1 to 741

I(a) Primary Residential Use Zone N I L

I(b) Mixed Residential Use Zone

1 to 18, 19A, 19B, 20 to 27, 29, 30pt, 31Apt, 33, 34pt, 35 to 72, 74 to 96, 97pt, 98 to 116, 128 to 132, 405, 406, 415 to 429, 431 to 446, 470, 471, 473 to 481, 484, 485pt, 486 to 488, 489A, 490, 491, 492B, 493 to 496, 498 to 503, 519 to 525, 527 to 529, 535, 536, 537B, 538B, 539B, 540B, 541B, 542 to 544, 562 to 576, 577B, 578B, 579 to 582, 583B, 584B, 588B, 589B, 658B, 660B, 661 to 666

II. Commercial Use Zone

659B, 677, 678, 680, 682 to 685, 693, 694.

III(a) Controlled Industrial Use Zone

485pt, 537A, 538A, 539A, 540A, 541A, 577A, 578A, 583A, 584A, 585 to 587, 588A, 589A, 589C, 590 to 615, 617 to 657, 658A, 659A, 660A, 673 to 676, 686 to 692, 695 to 704.

III(b) General Industrial Use Zone N I L

III(c) Special Industrial and Hazardous Use Zone N I L

tut.mp

46 43 ✓

IV. Educational Use Zone

30pt, 31Apt, 667 to 672, 679.

V. Public and Semi Public Use Zone

31B, 32, 34pt, 145, 483A, 483B, 489B.

VI. Agricultural Use Zone

28A, 28B, 73, 97pt, 118 to 127, 134 to 144, 146 to 219,
221 to 338, 339A, 339B, 340, 341A, 341B, 342 to 380, 381A, 381B,
382 to 384, 385A, 385B, 386A, 386B, 387 to 404, 407 to 414,
447 to 469, 472, 492A, 497, 504 to 518, 530 to 534, 545 to 561, 616.

TRANSPORTATION

117, 133, 220, 430, 482, 526, 681, 705 to 741

2.Village : 5. Keelathattapparai S.No.1 to 501

I(a) Primary Residential Use Zone N I L

I(b) Mixed Residential Use Zone

1 to 85,86pt,88 to 99,100B,103,104,197pt,219B,220B,
225 to 228,229A,231 to 236,242A,245A,246,247A,248A,249A,
250A,251,252,253A,297A,298,299A,300A,301A,302 to 317,319 to
325,326A,327A,328A.

II. Commercial Use Zone N I L

III(a)Controlled Industrial Use Zone

102

III(b)General Industrial Use Zone N I L

III(c)Special Industrial and Hazardous Use Zone N I L

IV. Educational Use Zone N I L

V.Public and Semi Public Use Zone

100A,101,145

VI.Agricultural Use Zone

86pt,105 to 107,108A,108B,109A,109B,110,111A,
111B,112 to 144,146,148 to 189,191 to 195,197pt,198 to
218,219A,220A,221 to 223,237A,238 to 241,242B,243,244,
245B,247B,248B,249B,250B,253B,254 to 296,297B,299B,300B,
301B,326B,327B,328B,329 to 485,486.

TRANSPORTATION

87,147,190,196,224,229B,230,237B,318,487 to 501

3.Village : 15. Kulayan Karisal S.No. 1 to 505

I(a) Primary Residential Use Zone N I L

I(b) Mixed Residential Use Zone (MR)

15 to 18, 100 to 103, 106, 107, 111 to 114, 134, 168 to 170,
171pt, 174, 175, 179 to 183, 184, 185 to 190, 224pt, 234, 235^{pt}, 236,
256pt.

II. Commercial Use Zone (C) N I L

III(a) Controlled Industrial Use Zone (IC)

42pt, 171pt, 235pt

IV. Educational Use Zone (E) N I L

V. Public and Semi Public Use Zone (PS) N I L

VI. Agricultural Use Zone (AG)

1, 2, 4, 7 to 9, 19 to 41, 42pt, 43 to 99, 104, 105, 108 to
110, 115 to 133, 135 to 156, 158 TO 163, 165 TO 167, 172, 173, 176,
177, 178, 195 to 218, 223, 224pt, 227 to 233, 237 to 255, 256pt,
257 to 260, 262 to 281, 283 to 289, 293 to 297, 299 to 309, 311,
313 to 338, 340 tp 350, 356 to 387, 396 to 402, 424 to 451,
453 to 480, 482 to 487, 490.

TRANSPORTATION

3, 5, 6, 10 to 14, 157, 164, 191 to 194, 219 to 222
225, 226, 261, 282, 290 to 292, 298, 310, 312, 452, 488, 489, 491.

COASTAL RUGULATION ZONE

This area is covered by Coastal Regulation Zone notification. The regulations as per Coastal zone regulation plan are applicable.

339, 351 to 355, 388 to 395, 403 to 423, 480, 481,
492 to 505.

4. Village : 16. Korampallam S.No.1 to 429

I(a) Primary Residential Use Zone N I L

I(b) Mixed Residential Use Zone (MR)

1,2,7 to 11,13 to 16,22pt,27 to 31,35,36,99,100,
107,130,131,198 to 209,254,343,356,358,359 to 362,369
to 373,385,388,390,393,404 to 406,407pt,408pt,411,428.

II. Commercial Use Zone (C)

26,32,350pt.,351pt,357,363,367,384,386,387,391,392,
398,399,422,423,425,426.

III(a) Controlled Industrial Use Zone (IC)

3,12,18 to 21,22pt,33,34,355pt,368,374 to 378,
381pt,382,383,394 to 396,397pt,408pt.

IV. Educational Use Zone (E) N I L

V. Public and Semi Public Use Zone (PS)

4

VI. Agricultural Use Zone (AG)

5,17,37 to 98,101 to 106,108 to 129,132 to 185,
251 to 253,400 to 403,407pt,408pt,409,410,412 to 421,
424,427,429.

TRANSPORTATION

6,23 to 25,336,340,364 to 366,389

COASTAL RUGULATION ZONE

This area is covered by Coastal Regulation Zone notification. The regulations as per Coastal zone regulation plan are applicable.

186 to 197, 210 to 250, 253 to 335, 337 to 339, 341, 342,
344 to 349, 350pt, 351pt, 352 to 354, 355pt, 379, 380, 381pt, 397pt.

5. Village : 17. Maravanmadam - S.No.1 to 265

I(a) Primary Residential Use Zone N I L

I(b) Mixed Residential Use Zone

1 to 9, 12 to 15, 17 to 20, 22 to 29, 30pt, 31, 32, 35 to 58, 59pt, 60, 61, 62pt, 67, 68pt, 69pt, 70 to 89, 95 to 111, 116pt, 129, 130, 138pt, 139pt, 141pt, 147, 187, 197pt, 198, 199, 202, 219, 227, 228, 229pt, 245, 253, 254, 259 to 264.

II. Commercial Use Zone

62pt, 90 to 94, 112 to 115, 116pt, 125pt, 131 to 133, 137, 138pt, 139pt, 140, 142, 195, 200, 201, 203 to 206, 211 to 214, 222, 225, 229pt, 239pt, 240 to 243, 244pt, 246 to 251.

III(a) Controlled Industrial Use Zone

30pt, 138pt, 141pt, 221, 239pt, 244pt

III(b) General Industrial Use Zone N I L

III(c) Special Industrial and Hazardous Use Zone N I L

IV. Educational Use Zone N I L

V. Public and Semi Public Use Zone

230 to 234

VI. Agricultural Use Zone

59pt, 68pt, 69pt, 121 to 124, 125pt, 126 to 128, 134 to 136, 143 to 146, 148 to 186, 188 to 194, 196, 197pt, 207 to 210, 252, 255 to 258, 265.

TRANSPORTATION

10, 11, 16, 21, 33, 34, 63 to 66, 117 to 120, 215 to 218, 220, 223, 224, 226, 235 to 238.

6. Village: 18, Kumaragiri. - S.No. 1 to 535

I.(a) Primary residential Use Zone: - Nil -

I.(b) Mixed residential use Zone:

S.Nos. 67pt, 100 to 102, 112, 113, 129, 142 to 146, 148 to 169, 174, 189, 191, 192, 193, 194, 195, 199 to 206, 210 to 213, 215, 218 to 221, 223, 225, 226, 229 to 237, 240 to 248, 250 to 252, 254 to 257, 258pt, 259 to 272, 275 to 278, 287 to 290, 294, 297 to 300, 303 to 306, 308, 309, 310, 311, 312, 313, 314, 321, 323, 324, 327, 332pt, 333, 336pt, 337, 338 to 345, 346, 347pt, 357, 360 to 363, 367 to 372, 376 to 383, 389, 390pt, 391 to 394, 401 to 423, 425pt, 426pt, 427pt, 429, 432, 433, 434pt, 435, 437 to 456, 463, 466 to 468, 469pt, 470 to 482, 484 to 486, 488, 490, 491, 495 to 504, 509 to 535.

II. Commercial Use Zone:

S.Nos. 6, 37, 38, 41 to 43, 45, 46, 51 to 53, 70, 71, 74 to 76, 80, 84, 85, 170 to 173, 175, 176pt, 177, 181 to 185, 186pt, 281, 283 to 286, 291 to 293, 328, 353 to 355, 358, 359, 373 to 375, 396, 397, 399, 400, 457 to 460, 469pt.

III.a) Controlled Industries Use Zone:

S.Nos. 1 to 5, 7 to 16, 108 to 111, 114, 186pt, 198, 222, 224, 273, 274 & 282.

b) General Industries Use Zone: - Nil -
c) Special Industrial and Hazardous use Zone: - Nil -

IV. Educational Use Zone:

S.Nos. 301, 320.

V. Public & Semi Public Use Zone:

S.Nos. 17 to 36, 54 to 66, 67pt, 68, 69, 116, 118 to 126, 130 to 141, 147, 190, 331, 332pt, 334, 336pt, 347pt, 348, 349.

c:\mptut.mp

VI. Agriculture Use Zone:

S.Nos.77 to 79,81,86 to 99,103 to 107,115,117,127,128,
176pt,196,197,214,216,227,228,238,239,249,253,258pt,335,350,
364 to 366,384 to 388,390pt,395,424,425pt,426pt,427pt,428,430,
431,434pt & 436.

TRANSPORTATION

39,40,44,47 to 50, 72,73,82,83,178 to 180,187,188,
207 to 209,217,279,280,295,296,302,307,315 to 319,322,325,326,
329,330,351,352,356,398,461,462,464,465,483,487,489,492 to 494,
505 to 508.

7. Village : 19. Senthilampannai - S.No.1 to 66

I(a) Primary Residential Use Zone N I L

I(b) Mixed Residential Use Zone

1 to 4, 10 to 13, 19, 22 to 28, 31, 32, 34 to 36, 43, 44,
47, 49 to 52, 54 to 56, 60, 61, 63 to 65, 66pt.

II. Commercial Use Zone

14 to 18, 38, 41, 42

III(a) Controlled Industrial Use Zone

66pt.

III(b) General Industrial Use Zone

N I L

III(c) Special Industrial and Hazardous Use Zone

N I L

IV. Educational Use Zone

N I L

V. Public and Semi Public Use Zone

N I L

VI. Agricultural Use Zone

6 to 9, 45, 46, 48, 53, 57 to 59, 62.

TRANSPORTATION

5, 20, 21, 29, 30, 33, 37, 39, 40.

8.Village : 20. Therku Silukkanpatti S.No.1 to 156

I(a) Primary Residential Use Zone N I L

I(b) Mixed Residential Use Zone

1,2,4 to 13,17,19 to 27,31 to 37,38,39pt,40pt,41,
42pt,43,44,45pt,46 to 57,59 to 63,70 to 82,83,84 to 102,
104pt,105pt,111,112,114 to 118,120 to 122,125,127 to 137,
140 to 144,149 to 156.

II. Commercial Use Zone N I L

III(a)Controlled Industrial Use Zone N I L

III(b)General Industrial Use Zone N I L

III(c)Special Industrial and Hazardous Use Zone N I L

IV. Educational Use Zone N I L

V.Public and Semi Public Use Zone N I L

VI.Agricultural Use Zone

3,39pt,40pt,42pt,45pt,58,103,104pt,105pt,113,119,
123,124,126,145.

TRANSPORTATION

14,15,16,18,28 to 30,64 to 69,106 to 110,138,
139,146 to 148.

9. Village: 21 Muthuswamipuram S.No. 1 to 209

I(a). Primary Residential use zone:

N I L

I(b) Mixed Residential use zone :

S.Nos. 1 to 5, 6pt, 7 to 11, 16 to 23, 26 to 28, 30 to 35,
37 to 66, 69 to 77, 81, 82, 85, 86, 89, 91, 92, 94 to 96, 98 to 101, 103, 107,
108, 110 to 118, 121, 122, 124 to 126, 129, 130, 133 to 136, 140 to 158,
160, 162, 165, 167 to 179, 183, 188 to 204, 205pt, 206, 207pt, 208, 209.

II. Commercial use zone:

- Nil -

III. (a) Controlled Industries use zone :

- Nil -

(b) General Industries use zone :

- Nil -

(c) Special Industries and Hazardous use zone :

- Nil -

IV. Educational use zone :

- Nil -

V. Public And Semi Public use zone:

S.Nos. 187pt.

VI. Agriculture use zone:

S.Nos. 6pt, 12 to 15, 24, 25, 29, 36, 83, 84, 87, 88, 90, 93, 97,
102, 104 to 106, 109, 119, 120, 123, 127, 128, 131, 132, 137 to 139, 159, 161,
163, 164, 166, 180 to 182, 184 to 186, 187pt, 205pt, 207pt.

TRANSPORTATION

67, 68, 78 to 80.

10) Village: 22. Vadakku Silukkampatti - S.No. 1 to 147

I(a) Primary Residential use Zone: - Nil -

I(b) Mixed Residential Use Zone:

S.Nos. 7 to 9, 24, 27, 28, 52 to 63, 65 to 68, 73, 74, 75, 77,
78 to 82, 86, 87, 89, 91 to 99, 101 to 103, 106 to 108, 109pt, 110,
111pt, 112 to 119, 121, 124 to 130, 134, 136 to 138, 141, 142, 143, 147.

II. Commercial Use Zone: - Nil -

III.a) Controlled Industries use Zone: - Nil -

b) General Industries Use Zone:

S.Nos. 1, 2, 3pt, 4, 5, 11 to 22, 31 to 33, 35, 36, 38 to 41,
43, 44, 46 to 50.

c) Special Industries and Hazardous use Zone: - Nil -

IV. Educational Use Zone: - Nil -

V. Public And Semi Public Use Zone: - Nil -

VI. Agriculture Use Zone:

S.Nos. 3pt, 25, 34, 37, 42, 45, 88, 104, 105, 109pt, 111pt, 120,
122, 123, 131, 139, 140, 144 to 146.

TRANSPORTATION

6, 10, 23, 26, 29, 30, 51, 64, 69 to 72, 76, 83 to 85, 90, 100, 132,
133, 135.

11. Village: 23. Ayyanadappu. S.No. 1 to 288

I(a) Primary Residential use Zone: - Nil -

I(b) Mixed Residential Use Zone:

S.Nos. 3 to 6, 9 to 26, 28, 29, 32, 34, 36, 37, 39, 41, 42, 44, 45, 48 to 64, 67, 68, 70, 73, 74, 77, 78, 80, 81, 84, 85, 87 to 95, 97, 100 to 105, 108, 109, 112, 113, 115, 116, 118 to 120, 124pt, 126, 127, 128, 131 to 152, 155 to 159, 161, 164, 165, 168 to 170, 171, 172, 174 to 181, 183, 185, 187 to 203, 205, 206, 208, 211 to 218, 220, 222, 223, 225, 226, 227pt, 228, 232pt, 235, 236, 239 to 241, 244, 245, 246, 258.

II. Commercial Use Zone:

S.Nos. 253 to 257, 259, 260, 263, 266, 267, 271, 275

III. a) Controlled Industries use Zone: S.Nos.

124pt, 207.

b) General Industries Use Zone: - Nil -

c) Special Industries and Hazardous Use Zone: - Nil -

IV. Educational Use Zone:

S.Nos. 227pt, 229, 230, 231, 232pt, 233,

V. Public And Semi Public Use Zone:

S.Nos. 232pt, 270.

VI. Agriculture Use Zone:

S.Nos. 1, 2, 7, 8, 27, 30, 31, 33, 35, 38, 40, 43, 46, 47, 65, 66, 69, 71, 72, 75, 76, 79, 82, 83, 86, 96, 98, 99, 106, 107, 110, 111, 114, 117, 121, 122, 129, 130, 153, 154, 160, 162, 163, 166, 167, 173, 182, 184, 186, 204, 209, 210, 221, 242, 243, 248, 249, 261, 262, 264, 265, 268, 269, 272, 273, 274, 276 to 287, 288.

TRANSPORTATION

123, 125, 219, 224, 234, 237, 238, 247, 250, 251, 252.

c:\mptut.mp

12.Village:24.Meelavittan - S.No.1 to 1736

I.a.Primary residential use zone: - Nil -

b.Mixed residential use zone:

S.Nos.14pt,15pt,16pt,107,108,167,179191,243 to 251,252A,252B,253A,253B,254A,254B,255,256,257A,257B,258,259,260A,260B,261A,261B,262 to 270,272 to 275,277 to 279,280pt,281 to 324,327 to 334,335pt,337A,337B,338 to 381,383pt,389 to 392,393pt,395pt,407,408pt,409 to 410,411pt,413A,414 to 416,456pt,457pt,468,469,470,473 to 486,488,489,492,496 to 505,508 to 517,519 to 532,533A,533B,534A,534B,535,536A,536B,537 to 555,557 to 566,567A,567B,568 to 571,572pt,574pt,578A,578B,579A,580,581,582A,582B,583pt,584 to 588,589A,589B,600,767pt,769pt.770, 808pt 810pt.813 to 815,816pt.817pt.,819 to 830,835,858,859pt,940,941,1257pt,1258B,1259B,1260B,1261,1262A,1262B,1263 to 1266,1269 to 1301,1308 to 1320,1321pt,1322 to 1324,1329pt,1330pt,1405,1406,1414pt,1415,1420,1489 to 1502,1516 to 1519,1521,1524pt,1527 to 1541,1547 to 1551,1554 to 1557,1560 to 1569,1571 to 1574,1586 to 1589,1621,1622pt,1623,1624,1626 to 1642,1709pt,1711.

II.Commercial use zone:

S.Nos.31,97pt,98pt,405pt,408pt,446pt,447,448A,448B,449 to 452,453A,453B,454,455,573,574pt,575 to 577,936,943^{pt},1267pt,1268,1302,1303,1304^{pt},1305pt,1306,1307,1325,1326^{pt},1327pt,1402pt,1403,1404,1407,1408pt,1409pt,1413pt,1416 to 1419,1421,1422,1423pt,1433pt,1512pt,1513pt,1514,1515,1520,1522pt,1523pt,1524pt,1525pt,1526,1570,1576,1577pt,1578pt,1579 to 1584,1590 to 1593,1594pt,1595pt,1597pt,1598pt,1599pt.

III.a.Controlled industrial use zone: N I L

b.General industrial use zone:

S.Nos.1 to 13, 17pt, 18 to 30, 32 to 93, 94pt, 95pt, 96pt, 97pt, 98pt, 99 to 103, 104pt, 105pt, 106pt, 109, 110pt, 111 to 113, 114pt, 115pt, 116pt, 117 to 144, 146 to 161, 163 to 166, 169 to 178, 180 to 190, 192 to 205, 206A, 207A, 208 to 214, 215A, 216A, 217A, 218 to 232, 233A, 233B, 234A, 234B, 235 to 237, 238A, 238B, 239, 240A, 240B, 241, 280pt, 335pt, 383pt, 384 to 388, 393pt, 394, 395pt, 396 to 404, 405pt, 406, 441pt, 583pt, 938, 939, 942, 944pt, 945, 946, 950pt, 951pt, 952, 953, 957pt, 961pt, 962, 1157, 1158pt, 1219 to 1245, 1246pt, 1247pt, 1248pt, 1249pt, 1250pt, 1251pt, 1252pt, 1253pt, 1254pt, 1255pt, 1256pt, 1258A, 1259A, 1260A, 1331pt, 1332 to 1334, 1347 to 1362, 1364, 1365A, 1376 to 1392, 1396 to 1400, 1401pt, 1408pt, 1409pt, 1410pt, 1411pt, 1412, 1413pt, 1424pt, 1425pt, 1426pt, 1427 to 1431, 1432pt, 1434pt, 1435 to 1445, 1449 to 1487, 1503 to 1510, 1511pt, 1512pt, 1523pt, 1575pt, 1585, 1596pt, 1597pt, 1599pt, 1600pt, 1601 to 1618, 1625, 1657pt, 1658pt, 1659pt, 1660, 1661pt, 1664pt, 1665, 1666pt, 1697pt, 1698pt, 1699pt, 1700pt.

c.Special industrial use zone:

N I L

IV.Educational use zone:

S.Nos.325, 326, 335pt, 738, 740pt, 799pt, 955pt, 956pt, 960.

V.Public & Semi public use zone:

S.Nos.206B, 207B, 215B, 216B, 217B, 1257pt, 1267pt, 1328pt, 1335, 1336pt, 1337pt, 1338, 1339, 1340pt, 1341 to 1346, 1363, 1365B, 1366 to 1375, 1393 to 1395, 1446 to 1448, 1543 to 1546, 1552, 1553, 1558, 1559, 1675pt, 1679pt, 1680pt, 1684pt, 1685pt, 1686pt.

VI.Agricultural use zone:

S.Nos.271, 276, 336, 413B, 556, 572pt, 579B, 902, 903pt, 904pt, 937, 948, 949pt, 950pt, 954, 958, 959, 963 to 973, 978 to 1058, 1061, 1062pt,

1063 to 1065, 1069 to 1072, 1077, 1078, 1079pt. 1083, 1084, 1085pt. 1089,
1090, 1091pt. 1095 to 1097, 1098pt. 1101 to 1105, 1107 to 1111, 1112pt.
1113 to 1116, 1117pt. 1119 to 1125, 1126pt, 1128, 1622pt, 1729pt, 1730,
1731.

Municipal limit: S.Nos. 419 to 432, 434, 442 to 445, 458 to 467, 471,
472, 487, 490, 491, 493 to 495, 506, 507, 518, 590 to 599, 601 to 736, 747
to 765, 812, 831 to 834, 836 to 857, 860 to 871, 882, 889 to 900,
1217, 1218, 1706 to 1708.

Merged survey number with 799: S.Nos. 800, 803 to 806, 818, 872 to
881, 883 to 888, 901, 916.

TRANSPORTATION

14pt. 15pt. 16pt. 17pt. 94pt. 95pt. 96pt. 97pt. 98pt. 104pt.
105pt. 106pt. 110pt. 114pt. 115pt. 116pt. 145, 162, 168, 242, 382,
405pt. 408pt. 411pt. 412, 417A, 417B, 418, 433, 435 to 440, 441pt, 446pt
859pt. 943^{pk}, 944pt. 949pt. 950pt. 951pt. 955pt. 956pt. 957pt. 961pt. 1205 to
1216, 1246pt. 1247pt. 1248pt. 1249pt. 1250pt. 1251pt. 1252pt. 1253pt.
1254pt. 1255pt. 1256pt. 1267pt. 1304pt. 1305pt. 1321pt. 1326^{pk}, 1327pt.
1328pt. 1329pt. 1330pt. 1331pt. 1336pt. 1337pt. 1340pt. 1401pt.
1402pt. 1408pt. 1409pt. 1410pt. 1411pt. 1413pt. 1414pt. 1423pt.
1424pt. 1425pt. 1426pt. 1432pt. 1433pt. 1434pt. 1488, 1511pt.
1512pt. 1513pt. 1522pt. 1523pt. 1525pt. 1542, 1575pt. 1577pt.
1578pt. 1594pt. 1595pt. 1596pt. 1597pt. 1598pt. 1599pt. 1600pt.
1619, 1620, 1643 to 1656, 1661pt. 1693pt. 1710, 1712 to 1714.

COASTAL REGULATION ZONE

This area is covered by Coastal Regulation Zone notification. The regulations as per Coastal zone regulation plan are applicable.

456pt,457pt,737,739,740pt,741 to 746,766,767pt,768,
769pt,771 to 799,801,802,807,808pt,809,810pt,811,816pt,817pt,
903pt,904pt,905 to 915,917 to 935,947,974 to 977,1059,1060,1062pt
1066,1067,1068,1073 to 1076,1079pt,1080 to 1082,1085pt,1086,
1087,1088,1091pt,1092 to 1094,1098pt,1099,1100,1106,1112pt,1117pt
1118,1126pt,1027 to 1156,1158pt,1159,1160,1161pt,1162 to 1204,
1657pt,1658,1659pt,1661pt,1662,1663,1664pt,1666pt,1667 to 1669,
1670 to 1674,1675pt,1676 to 1678,1679pt,1680pt,1681 to 1683,
1684pt,1685pt,1686pt,1687,1688 to 1692,1693pt,1694 to 1696,
1701 to 1705,1709pt,1715 to 1729,1732 to 1736.

13. Village: 25. Sankaraperi - S.No. 9 to 16, 54 to 56, 62 to 97,
99 to 434, 436 to 514

I(a) Primary Residential use Zone: - Nil -

I(b) Mixed Residential Use Zone:

S, Nos. 9 to 16, 54 to 56, 62 to 86, 88, 96, 97, 101, 102,
103pt, 105 to 109, 115 to 137, 140 to 143, 144pt, 147 to 158, 169, 170pt,
171, 172pt, 173, 174, 175, 176 to 195, 196pt, 197, 201 to 226, 228 to 232,
233pt, 234 to 236, 238 to 276, 278 to 290, 291pt, 292pt, 293pt, 294pt,
295pt, 296 to 307, 366, 368, 369pt, 375, 376, 412, 436 to 438, 445 to 449,
451, 452, 454 to 461, 489pt.

II. Commercial Use Zone:

S. Nos. 87, 89, 90, 91, 92pt, 93pt, 95pt, 99pt, 159, 160, 161pt,
162 to 165, 167, 168, 199pt, 200, 320, 321pt, 322, 371pt, 493pt.

III. a) Controlled Industries use Zone:

S. Nos. 92pt, 93pt, 94, 95pt, 99pt, 104, 161pt, 170pt, 172pt, 198,
199pt, 308, 309pt, 310pt, 311 to 319, 323pt, 324pt, 325pt, 326 to 360,
361pt, 362, 363 to 365, 367, 370pt, 372pt, 373pt, 374, 377 to 411, 413 to 434,
463 to 478, 480 to 484, 485pt, 486pt, 487, 488, 490pt, 491, 492, 493pt, 494pt,
496, 497pt, 498 to 514.

b) General Industries Use Zone: - Nil -

c) Special Industries and Hazardous Use Zone: - Nil -

IV. Educational Use Zone:

S. Nos. 110 to 114, 138, 139, 144pt, 145.

V. Public And Semi Public Use Zone:

S. Nos. 103pt, 196pt, 227, 439 to 443, 450

VI. Agriculture Use Zone:

S. Nos. 233pt, 444, 453.

c:mpitut.mp

TRANSPORTATION

100, 146, 166, 237, 277, 291pt, 292pt, 293pt, 294pt, 295pt,
309pt, 310pt, 321pt, 323pt, 324pt, 325pt, 361pt, 369pt, 370pt, 371pt,
372pt, 373pt, 462, 479, 485pt, 486pt, 489pt, 490pt, 493pt, 494pt, 495,
497pt.

14. Village:26.Pulipanjankulam S.No.1 to 4

I(a)Primary Residential use Zone: - Nil -

I(b)Mixed Residential Use Zone: - Nil -

II.Commercial Use Zone:

S.Nos.1pt,4

II.a)Controlled Industries use Zone: - Nil -

b)General Industries Use Zone: - Nil -

c)Special Industries and Hazardous Use Zone: - Nil -

IV.Educational Use Zone: - Nil -

V.Public And Semi Public Use Zone:

S.Nos.1pt

VI.Agriculture Use Zone: - Nil -

TRANSPORTATION

2,3

15. Village: 27. Mappilai urani S.No. 1 to 234

I.a) Primary Residential use Zone: - Nil -

I.b) Mixed Residential Use Zone:

S.Nos. 1 to 4, 10pt, 11 to 14, 16, 17, 31 to 38, 40 to 54, 57, 58, 61, 62, 63pt, 64 to 68, 70 to 72, 74 to 83, 84pt, 85, 90pt, 91pt, 92pt, 93 to 113, 114pt, 115 to 130, 132 to 137, 138pt, 139pt, 140, 141pt, 147 to 155, 162, 163, 166 to 169, 177, 178, 185pt, 186 to 189, 190pt, 191, 192, 198pt, 199, 200pt, 210pt, 212, 216, 217pt, 218pt, 219, 222pt, 223pt, 226, 230.

II. Commercial Use Zone:

S.Nos. 5 to 8, 9pt, 15, 23, 24, 25, 27, 28, 29, 39pt, 89pt, 209pt.

III.a) Controlled Industries use Zone:

S.Nos. 9pt, 10pt, 26, 39pt, 63pt, 89pt, 90pt, 91pt, 92pt, 114pt, 190pt, 198pt, 200pt, 218pt, 222pt, 223pt,

b) General Industries Use Zone: - Nil -

c) Special Industries Use Zone: - Nil -

IV. Educational Use Zone:

S.No. 210pt.

V. Public And Semi Public Use Zone:

S.Nos. 73, 197, 209pt, 215, 217pt.

VI. Agriculture Use Zone:

S.Nos. 60, 69, 84pt, 131, 138pt, 139pt, 190pt,

TRANSPORTATION

18 to 22, 30, 55, 56, 59, 86 to 88, 144 to 146, 156, 157, 161, 164, 193 to 196, 201 to 208, 211, 213, 214, 220, 221, 224, 225.

COASTAL REGULATION ZONE

This area is covered by Coastal Regulation Zone notification. The regulations as per Coastal zone regulation plan are applicable.

141pt, 142, 143, 158 to 160, 165, 170 to 176, 179, 180, 181, 182 to 184, 185pt, 227 to 229, 231 to 234.

16. Village:28.Tuticorin Rural.-- S. No.1 to 42,104 to 128,239,
415A.

I.a)Primary Residential use Zone: - Nil -

I.b)Mixed Residential Use Zone:

S.Nos.22,23,25 to27,32 38pt,39,41pt,42,104pt,105,
106pt,107pt,108pt,109.

II.Commercial Use Zone:

S.Nos.38pt.

III.a)Controlled Industries use Zone:

S.Nos.24,104pt,106pt,107pt,108pt.

b)General Industries Use Zone: - Nil -

c)Special Industries Use Zone: - Nil -

IV.Educational Use Zone:S.Nos. - Nil -

V.Public And Semi Public Use Zone:

S.Nos.40,41pt,

VI.Agriculture Use Zone: -Nil -

TRANSPORTATION

NIL

COASTAL RUGULATION ZONE

This area is covered by Coastal Regulation Zone notification. The regulations as per Coastal zone regulation plan are applicable.

1 to 21,28 to 31,33 to 37,110 to 122,126 to 128,237.

Taluk:Tuticorin

17.Village:29.Mullakkadu. - S.No.1 to 815

I.a.Primary residential use zone: - N I L -

b.Mixed residential use zone:

S.Nos. 140pt,141,142,158 to 166,168,169,199 to 213,
217 to 238,239pt,240,241,251 to 257,258pt,263,268pt,269,270pt,
281pt. 756 to 758.

II.Commercial use zone:, N I L

III.a.Controlled industrial use zone: N I L

b.General industrial use zone:

S.Nos.100pt.120Apt,194,216,239pt,250,258pt,259 to 262,
264,265pt.266pt.268pt,270pt,271,445 to 447,448pt,536,610,611,
623 to 625,626pt,630pt,631pt,632pt,633pt,634pt,635 to 642,645.

c.Special industrial use zone: N I L

IV.Educational use zone: N I L

V.Public & Semi public use zone:

S.No .345pt.

VI.Agricultural use zone:

S.Nos.11pt,15pt,16pt,19Bpt,19Cpt,20Bpt,21B,22B,23pt,
25Bpt,26Bpt,37Bpt,101,102,103pt.114pt.115pt.116pt.117 to 119,
120Apt,120B,121 to 123,124pt.125pt.126pt.127pt.128Apt.
137Apt,137Bpt,138A,138B,139,140pt,143 to 146,147A,
147B,147C,148,149,150A,150B,151,152A,152B,152C,153 to 157,
167,170 to 193,195 to 198,346,352pt,353,354pt,402pt,403pt,
609,763 to 767,768 to 777, 787 to 790,791 to 796,800pt..

TRANSPORTATION

6pt. 17pt. 49, 73, 214, 215, 690, 760 to 762.

COASTAL REGULATION ZONE

This area is covered by Coastal Regulation Zone notification. The regulations as per Coastal zone regulation plan are applicable.

1 to 10, 11pt, 12 to 14, 15pt, 16pt, 17, 18A, 18B, 19A, 19Bpt, 19Cpt, 20A, 20Bpt, 21A, 22A, 23Apt, 24, 25A, 25Bpt, 26A, 26Bpt, 27 to 36, 37A, 37Bpt, 38, 39A, 39B, 40 to 48, 50 to 72, 74 to 99, 100pt, 103pt, 104 to 113, 114pt, 115pt, 116pt, 124pt, 125pt, 126pt, 127pt, 128Apt, 128B, 129, 130, 131A, 132A, 132B, 133A, 133B, 134A, 134B, 135, 136A, 136B, 137Apt, 137Bpt, 242 to 249, 265pt, 266pt, 267, 272 to 280, 281pt, 282 to 340, 345pt, 348 to 351, 352pt, 354pt, 355 to 401, 402pt, 403pt, 404 to 444, 448pt, 449 to 535, 537 to 608, 612 to 622, 626pt, 627 to 629, 630pt, 631pt, 632pt, 633pt, 634pt, 643, 644, 646 to 689, 691 to 755, 759, 778 to 786, 797 to 799, 800pt, 801 to 815.

OTTAPIDARAM TALUK - OTTAPIDARAM PANCHAYAT UNION

18. Village:40.Pudiyamputhur - S.No 1.to 345

I(a)Primary residential use Zone: - Nil -

(b)Mixed residential use Zone:

S.Nos.2 to 4,6 to 9,13 to 15,25pt,27 to 29,30pt,33,
36pt,40pt,41 to 47,49 to 52,53pt,54,57pt,61,63,65,70,71,73 to 75,
77 to 79,81,82,84,85,87 to 92,95,96,98,101,102,104 to 118,120,
122,123,124,126,128 to 134,136 to 138,140,142,144,146 to 148,
151 to 156,159 to 168,170 to 176,178,255,256,261,265,266,
268 to 274,276,278 to 282,284.

II.Commercial Use Zone:

S.Nos.25pt,30pt,31,36pt,40pt,182 to 184,186,187,
190 to 192,194,196 to 198,200,205,206,208,209,211 to 214,
217 to 219,225,264,267.

III.a)Controlled Industries Use Zone:

S.Nos.25pt,103,201 to 204,220 to 224,226 to 254,
257 to 259,285 to 345.

b)General Industries Use Zone:

- Nil -

c)Special Industrial and Hazardous Use Zone:

- Nil -

IV.Educational Use Zone:

S.Nos.39,40pt.

V.Public &Semi Public Use Zone:

S.Nos.94

VI.Agriculture Use Zone:

S.Nos.10 to 12,16 to 22,48,53pt,55,56,57pt,60,64,68,69,
72,76,80,83,86,119,121,125,127,135,139,141,143,150,157,158,177,185,
260,262,263,275,277,283.

c:\mptut.mp

TRANSPORTATION

1, 5, 23, 24, 26, 32, 34, 35, 37, 38, 58, 59, 62, 66, 67, 93, 97,
99, 100, 145, 149, 169, 179, 180, 181, 188, 189, 193, 195, 199, 207, 210,
215, 216.

c:\mptut.mp

7269

19. Village: 41. Swamynatham. S.No. 1 to 560

I(a) Primary residential use Zone: - Nil -

(b) Mixed residential use Zone:

S.Nos. 1 to 6, 9 to 13, 16 to 20, 22 to 28, 32, 33, 38, 39, 41, 42, 50, 71, 72, 78, 80, 81, 82, 85, 97 to 106, 109 to 116, 118, 120 to 122, 132 to 160, 231, 233pt, 234 to 236, 356, 403, 406, 409pt, 410, 412, 416, 419, 422, 423, 428, 431 to 433, 435, 436, 443, 444, 448, 450, 451, 453pt, 454, 456, 458, 460, 462 to 465, 468, 473, 474.

II. Commercial Use Zone:

S.Nos. 34 to 37, 43, 44, 45pt, 48, 49, 51, 54 to 59, 63 to 66, 69, 70, 83, 84, 88, 90, 92 to 94, 123, 127, 130, 131, 161, 162, 165 to 167, 172, 175, 176, 178, 179, 181, 182, 209, 210, 212, 213, 215, 220, 221, 420, 421, 424, 425, 427, 437 to 439, 442.

III. a) Controlled Industries Use Zone: - Nil -

b) General Industries Use Zone: - Nil -

c) Special Industrial and Hazardous Use Zone:

S.Nos. 173, 174, 219, 222 to 226, 228, 238, 244 to 255, 259, 260, 262 to 268, 269 to 273, 276, 277, 279 to 288, 291 to 298, 300, 301, 304 to 307, 309, 312, 314, 317, 318, 319, 322 to 324, 326, 328, 330, 331, 333, 335, 337, 338, 341, 343, 344, 347, 348, 351, 352, 354, 355, 357 to 363, 365, 368, 370 to 375, 379, 380, 381, 383, 385, 386, 388, 390 to 393, 471, 472, 475 to 477, 479 to 483, 485, 487, 489, 490, 492 to 496, 499, 500, 503 to 505, 507 to 518, 520, 521, 523 to 525, 527, 528, 531 to 559, 560pt.

IV. Educational Use Zone: - Nil -

V. Public & Semi Public Use Zone:

S.Nos. 396, 398, 399, 401, 408.

c:\mptut.mp

VI. Agriculture Use Zone:

7, 8, 14, 15, 21, 29 to 31, 45pt, 60 to 62, 73 to 77, 79, 87,
89, 95, 96, 107, 108, 117, 119, 124, 125, 169, 180, 183 to 208, 216 to 218,
227, 229, 230, 232, 233pt, 237, 239 to 243, 256 to 258, 261, 274, 275, 278,
289, 290, 299, 302, 303, 310, 313, 325, 329, 332, 334, 336, 339, 340, 342, 349,
350, 397, 405, 409pt, 417, 426, 429, 430, 434, 440, 441, 445 to 447, 449, 452,
453pt, 455, 457, 459, 461, 466, 467, 469, 470, 478, 484, 486, 488, 491, 497, 498,
501, 502, 506, 519, 522, 526, 529, 530, 560pt.

TRANSPORTATION

40, 46, 47, 52, 53, 67, 68, 86, 91, 126, 128, 129, 163, 164, 168, 170,
171, 177, 211, 214, 308, 311, 315, 316, 320, 321, 327, 345, 346, 353, 364, 366,
367, 369, 376 TO 378, 382, 384, 387, 389, 394, 395, 400, 402, 404, 407, 411,
413 TO 415, 418.

20. Village:42.Terkuveerapandiyapuram. - S.No.1 to 432

I(a)Primary residential use Zone: - Nil -

(b)Mixed residential use Zone:

S.Nos.92,93,100,102 to 105,107 to 109,111,113 to 115,
172,260,269,271,272,274 to 277,279,280,283,284,353pt,357pt,387pt,
416,417,425 to 432.

II.Commercial Use Zone: - Nil -

III.a)Controlled Industries Use Zone:

S.Nos.1 to 11,14 to 21,25 to 28,30 to 34,36,37,39 to 5
57 to 78,82 to 91,94,95,112,120 to 122,124,126,127,128,130 to 13
137 to 139,142 to 145,147 to 171,173 to 225,229 to 235,238 to 242
244,245,248,249,254 to 256,258,259,264 to 266,282,285,286,288 to ²⁹
293 to 295,297 to 299,301 to 320,322,324 to 326,328 to 338,340,34
343,346,348,350,351,353pt,357pt,358 to 361,363,365 to 368,370,
372 to 376,381,385,387pt,388 to 390,394 to 404,406 to 414,419 to ⁴⁰

b)General Industries Use Zone: - Nil -

c)Special Industrial and Hazardous Use Zone: - Nil -

IV.Educational Use Zone: - Nil -

V.Public &Semi Public Use Zone: - Nil -

VI.Agriculture Use Zone:

S.Nos.12,13,38,79 to 81,96 to 98,146,226 to 228,236,237
243,246,247,250 to 253,257,262,263,267,268,281,339,342,344,345,34
352,354,362,364,369,371,377,379,391 to 393.

TRANSPORTATION

22 to 24,29,35,55,56,99,101,106,110,116 to 119,123,125,
129,136,140,141,261,270,273,278,287,291,292,296,300,321,323,327,
347,355,356,378,380,382 to 384,386,405,415,418,422 to 424.

c:mptut.mp

21.Village:43.Sillanatham - S.No.1 to 366

I(a)Primary residential use Zone: - Nil -

(b)Mixed residential use Zone:

S.Nos.61,130 to 133,266,273,281,282,285.

II.Commercial Use Zone:

S.Nos.46 to 53,55,56,59,99 to 102,106,109,112,114,
136 to 141,164,167,168pt,169,171,196,197,206,288 to 294,300,301,
303,304,325,326,328,329,331to 334,336,339,340,362,365,366.

III.a)Controlled Industries Use Zone:

S.Nos.73,75 to 92,94 to 98,118 to 121,126,142 to 148,
150,152 to 154,156 to 158,161,165,166,172 to 175,178 to 180,
183 to 188,190,192 to 194,198,199,202,204,205,208,209,212,
214 to 265, 267 to 272,274 to 279,280pt,308 to 324,341 to 361.

b)General Industries Use Zone: - Nil -

c)Special Industrial and Hazardous Use Zone: - Nil -

IV.Educational Use Zone: - Nil -

V.Public &Semi Public Use Zone: - Nil -

VI.Agriculture Use Zone:

S.Nos.1 to 45,62 to 72,74,93,105,110,111,113,115 to 117,
122 to 125,127 to 129,149,155,163,168pt,176,177,181,182,189,191,
195,200,201,203,210,211,213,280pt,286,287,297,299,305 to 307.

TRANSPORTATION:

54,57,58,60,103,104,107,108,134,135,151,159,160,162,
170,207,283,284,295,296,298,302,327,330,335,337,338,363,364.

c:mptut.mp

22. Village: 44. Pudur Pandiyapuram - S.No. 1 to 373

I(a) Primary residential use Zone: - Nil -

(b) Mixed residential use Zone:

S.Nos. 1, 3 to 19, 22, 25 to 31, 32pt, 33 to 39, 64, 66, 68 to 71, 78 to 88, 92 to 95, 98, 99, 101 to 105, 140 to 145, 154, 156 to 169, 233, 260, 269, 271, 278 to 280, 285 to 291, 292pt, 293, 294pt, 301, 305, 306, 309, 310, 322, 334, 335, 336.

II. Commercial Use Zone:

S.Nos. 41 to 44, 50 to 54, 57, 61 to 63, 65, 67, 76, 77, 100, 106, 107, 109 to 112, 117pt, 118 to 120, 126, 171, 226, 229, 230, 231pt, 232pt, 240, 241pt, 244, 247, 258pt, 261, 262pt, 263pt, 264pt, 267pt, 277pt, 295, 298, 300pt, 307, 308, 312pt, 314pt, 315, 318, 320, 323, 325, 327, 332, 333.

III. a) Controlled Industries Use Zone: - Nil -

b) General Industries Use Zone:

S.Nos. 108, 338 to 341, 345, 348 to 373.

c) Special Industrial and Hazardous Use Zone: - Nil -

IV. Educational Use Zone: - Nil -

V. Public & Semi Public Use Zone:

S.Nos. 45, 48, 49, 124, 125, 127 to 129, 131, 132, 135, 252, 254, 255, 258pt, 262pt, 263pt, 264pt, 267pt.

VI. Agriculture Use Zone:

S.Nos. 2, 20, 21, 23, 24, 32pt, 55, 56, 72 to 75, 89, 90, 91, 96, 97, 121 to 123, 148 to 153, 172 to 174, 181 to 225, 227, 228, 234, 235pt, 236 to 239, 242, 243, 245, 246, 248 to 250, 266, 272 to 275, 281 to 284, 292pt, 294pt, 296, 297, 299, 300pt, 302 to 304, 321, 324, 326, 346, 347.

c:mptut.mp

TRANSPORTATION:

40, 46, 47, 58 to 60, 113 to 116, 117pt, 130, 133, 134, 136 to 139
146, 147, 155, 170, 175 to 180, 231pt, 232pt, 235pt, 241pt, 251, 253, 256, 257,
258pt, 259, 262pt, 263pt, 265, 267pt, 268, 270, 276, 277pt, 311, 312pt, 313,
314pt, 316, 317, 319, 328 to 331, 337, 342 to 344.

c:mptut.mp

7875

23.Village:45.Mel Arasadi S.No.1 to 348

I(a)Primary residential use Zone: - Nil -

(b)Mixed residential use Zone:

S.Nos.99 to 109,112 to 114,117 to 124,127,128,130,
133,134,144,146,167 to 170,173,175,176,178,180,184 to 188,
191 to 193,206,253,269,270,271,303 to 310,311pt,312 to 314,320 to 347

II.Commercial Use Zone:

S.Nos.93pt,94pt,95,115,116.

III.a)Controlled Industries Use Zone:

S.Nos.1 to 4,7 to 14,17 to 21,25,26,29,34 to 55,
59 to 69,71 to 75,77,78,80 to 85,88,89,90,91,93pt,94pt,136pt,
148 to 163,195,197,199,201,202,208 to 211,213 to 216,218,219,221,
223,225,227,230 to 239,241,244 to 251,255,258 to 261,263,264,266,
273,275 to 277,280,281,283,285 to 289,291 to 298,300pt.

b)General Industries Use Zone: - Nil -

c)Special Industrial and Hazardous Use Zone: - Nil -

IV.Educational Use Zone: - Nil -

V.Public &Semi Public Use Zone: - Nil -

VI.Agriculture Use Zone:

S.Nos.5,6,15,16,30 to 33,70,76,79,136pt,142,143,145,
147,164 to 166,181,194,196,198,207,212,217,220,222,224,226,243,
252,257,262,265,267,268,272,274,299,300pt,301,302,311pt,348.

TRANSPORTATION:

22 to 24,27,28,56 to 58,86,87,92,96 to 98,110,111,125,
126,129,131,132,135,137 to 141,171,172,174,177,179,182,183,189,
190,200,203 to 205,228,229,240,242,254,256,278,279,282,284,290,
315 to 319.

c:mptut.mp

24.Village:62.Tharuvaikulam - S.No.1 to 398

I.a)Primary residential Use Zone: -- Nil -

b)Mixed residential Use Zone:

41,43,47,178,240,244,245,246,248,274,296,297,
300 to 302,304,307,311,312,313pt,314,319pt.

II.Commercial use zone: - Nil -

III.a)Controlled industrial use zone:

S.Nos.206 to 239,247,249, 250,284,290,291pt.

b)General industrial use zone: - Nil -

c)Special industrial use zone: - Nil -

IV.Educational use zone: - Nil -

V.Public & Semi Public use zone:

S.Nos.287pt, ~~288, 289, 290, 291~~

VI.Agricultural use zone:

S.Nos.1 to 22,24 to 26,31 to 40,42,44 to
46,48 to 102,110,112 to 123,175 to 177,180pt.184,185,186pt
187,188pt,189,199 to 205,241 to 243,255 to 263,270,274pt.
283,285,286,287pt,288,,289,291pt,293,295,303,305,313pt.

TRANSPORTATION

23,27 to 30,251 to 254,271 to 273,292,298,
299,315 to 317.

COASTAL RUGULATION ZONE

This area is covered by Coastal Regulation Zone notification. The regulations as per Coastal zone regulation plan are applicable.

23,27 to 30,103 to 109,111,124 to 174,179,180pt,
181 to 183,186pt,188pt,190 to 198,251 to 254,264 to 269,
271 to 273,274pt,275 to 281,282pt,292,298,299,306,308 to 310,
315 to 318,319pt,320 to 395,396pt,397,398.

25. Village: 63. Kil Arasadi. S.No. 1 to 322

I.a) Primary residential use zone: - Nil -

b) Mixed residential use zone:

S.Nos. 132, 154, 155, 156pt, 213pt, 216, 302.

II. Commercial use zone: - Nil -

III.a) Controlled industrial use zone:

S.Nos. 90, 93 to 95, 164 to 169, 227pt, 228.

b) General industrial use zone: - Nil -

c) Special industrial use zone: - Nil -

IV. Educational use zone: - Nil -

V. Public and semi public use zone:

S.Nos. 131pt, 232 to 235, 243, 245 to 254, 265.

VI. Agricultural use zone:

S.Nos. 1 to 7, 9 to 12, 15, 17 to 43, 48 to 52, 54 to 83,
85, 87, 88, 97 to 130, 131pt, 133 to 153, 156pt, 157 to 162, 172 to 175,
178 to 187, 191, 194 pt. 195pt. 197pt. 200pt. 201pt, 202pt. 203, 204, 209,
213pt, 218 to 225, 227pt, 229 to 231, 239, 240, 266, 267, 274, 275,
294 to 298, 301, 303 to 309, 311pt. 312, 316pt

TRANSPORTATION

8, 13, 14, 16, 44 to 47, 53, 84, 86, 89, 91, 92, 96,
163, 170, 171, 176, 177, 188 to 190, 192, 205 to 208, 210 to 212,
214, 215, 217, 226, 236, 237, 238, 241, 242, 244, 300.

COASTAL REGULATION ZONE

This area is covered by Coastal Regulation Zone notification. The regulations as per Coastal zone regulation plan are applicable.

193, 194pt. 195pt, 196, 197pt. 198, 199, 200pt. 201pt., 202pt
255 to 264, 268 to 273, 276 to 293, 299, 310, 311pt, 313 to 315, 316pt.
317, 318 to 322.

26.Village: 55.Iruvappapuram - S.No.1 to 962 (699 merged with 698)

I.a.Primary residential use zone: N I L

b.Mixed residential use zone:

S.Nos.5,7,203 to 206,253,254,287,288,330,331,395,
461,474,475,476,478 to 483,485 to 490, 537p,573,580,581,584,652,
659,661,663,664,727 to 739,749,750,752pt,753,829,830,842 to 854,
858 to 870,883,885,888,889p,947,951,952p.

II.Commercial use zone: N I L

III.a.Controlled industrial use zone: N I L

b.General industrial use zone: 952p.

c.Special industrial use zone: N I L

IV.Educational use zone: N I L

V.Public & Semi public use zone:

6,8,9,484,694,889p.

VI.Agricultural use zone:

1 to 4,10 to 166,168 to 173,175 to 191,193 to 202,
207 to 210,211/A,B,212A,212B,213 to 246,247A,247B,248 to 252,
255 to 286,289 to 329,332 to 394,396 to 450,451A,451B,452A,452B,
453,454A,454B,455 to 460,462 to 473,477,491 to 536,537p,538 to
555,556A,556B,557 to 572,574 to 579,582,583,585 to 629,631 to 651,
653,654,656 to 658,662,665 to 693,695,696,697,698,700 to 726,
871 to 882,886,887,890,891 to 893,894 to 905,906A,906B,907 to 946,
948 to 950,953 to 962.

TRANSPORTATION

167,174,192,630,655,660,884.

COASTAL RUGULATION ZONE

This area is covered by Coastal Regulation Zone notification. The regulations as per Coastal zone regulation plan are applicable.

740 to 748,752pt,754,755,756 to 828,831 to 841,855 to 857

27.Village: 64.Maramangalam S.No.1 to 948

I.a)Primary residential use zone: - N I L -

b)Mixed residential use zone:

S.Nos.303 to 311,318 to 322,340,341pt,471 to 473,
475 to 478,486,487,595,703,771 to 773,791 to 796,804,829 to 841,
860,865 to 871,873 to 894,895,897 to 899,902 to 906,908,909,910,
911 to 936,938.

II.Commercial use zone: - Nil -

III.a)Controlled industrial use zone: - Nil -

b)General industrial use zone:S.Nos.312,479,872.

c)Special industrial and Hazardous use zone: - Nil -

IV. Educational use zone - Nil -

V. Public and semi public use zone: - Nil -

VI.Agricultural use zone:

S.Nos.1 to 212,214 to 221,223 to 274,276 to 302,
313 to 317,323 to 339,341pt,342 to 363,365 to 470,480 to 485,
488 to 594,596 to 618,620 to 702,704 to 757,759 to 770,774 to 790,
797 to 803,805 to 812,814 to 828,842 to 859,861 to 864,896,900,
901,907,937,939,940,941,943 to 948.

TRANSPORTATION

213,222,275,364,474,619,758,813,942

28.Village:65.Manjaneerkayal S.No.1 to 263

I.a)Primary residential use zone: - N I L -

b)Mixed residential use zone:

S.Nos.39 to 61,63 to 67,68pt,69.

II.Commercial use zone: - Nil -

III.a)Controlled industrial use zone: - Nil -

b)General industrial use zone:

S.Nos.68pt.

c)Special industrial and Hazardous use zone: - Nil -

IV.Educational use zone: - Nil -

V.Public and semi public use zone:

S.Nos.146Apt,146B,147 to 150,

VI.Agricultural use zone:

S.Nos.1 to 38,62,70 to 145,146Apt,152
to 238,240 to 249,251,253 to 260,262,263.

TRANSPORTATION:

151,239,250,252,261

29. Village:66.Palayakayal - S.No.1 to 567

I.a.Primary residential use zone: - N I L -

b.Mixed residential use zone:

S.Nos.176,394,398 to 402,438,491,492, 494 to 510,
512 to 520,535pt.

II.Commercial use zone:

S.Nos. 183,193,194.

III.a.Controlled industrial use zone: - Nil -

b.General industrial use zone: - Nil -

c.Special industrial use zone:

S.Nos.195pt,522,526.

IV.Educational use zone: N I L

V.Public & Semi public use zone: N I L

VI.Agricultural use zone:

S.Nos. 56 to 174,382 to 393,395,396,439 to 441,442B,
443 to 445,446A,446B,447 to 452,454 to 489,523 to 525,527,528,533,
534,535pt,536.

TRANSPORTATION

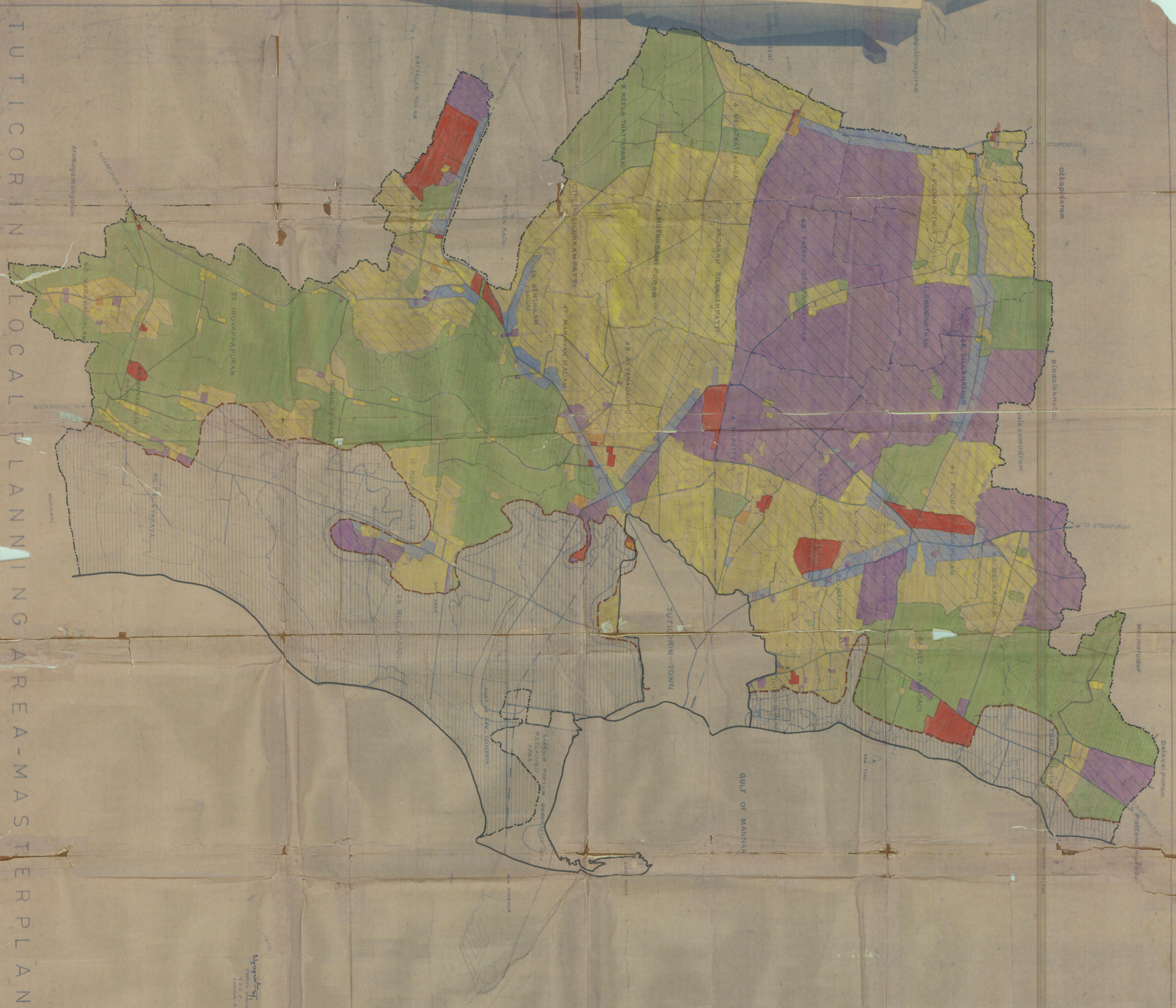
184,405,490,493,511,521,537.

COASTAL RUGULATION ZONE

This area is covered by Coastal Regulation Zone notification. The regulations as per Coastal zone regulation plan are applicable.

1 to 55,175 to 182,185 to 192,195pt.197 to 381,397.
403,404,406 to 437,442A,453,529 to 532,538 to 567.

TUTICORIN LOCAL PLANNING AREA-MASTER PLAN



PROPOSED LAND USE - 2015 VICINITY AREA

LEGEND

- L.P.A. BOUNDARY
- MUNICIPAL BOUNDARY
- TALUK / PANCHAYAT UNION BOUNDARY
- VILLAGE BOUNDARY
- ROADS
- RAILWAY LINE

USE ZONE

- RESIDENTIAL
- COMMERCIAL
- INDUSTRIAL
- EDUCATIONAL
- PUBLIC AND SEMI PUBLIC
- AGRICULTURAL
- WATER BODIES

- EXISTING PROPOSED

COASTAL REGULATION ZONE

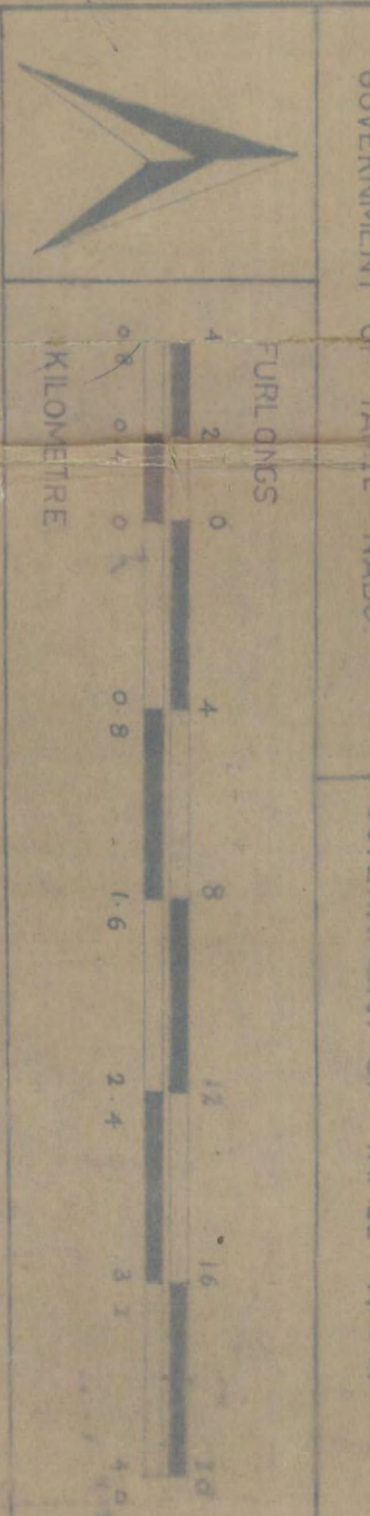
This area is covered by coastal Regulation zone Notification. The Regulation plan are applicable.

MEMBER SECRETARY
TUTICORIN LOCAL PLANNING AUTHORITY

Zone Director
TOWN AND COUNTRY PLANNING
MADRAS REG. 02

Director of Town and Country Planning
Tamil Nadu

Secretary
HOUSING AND URBAN DEVELOPMENT
DEPARTMENT
GOVERNMENT OF TAMIL NADU



OFFICE OF THE DEPUTY DIRECTOR OF TOWN AND COUNTRY PLANNING
TUTICORIN REGION
TUTICORIN-621 002

TUTICORIN MASTER PLAN

PROPOSED LAND USE

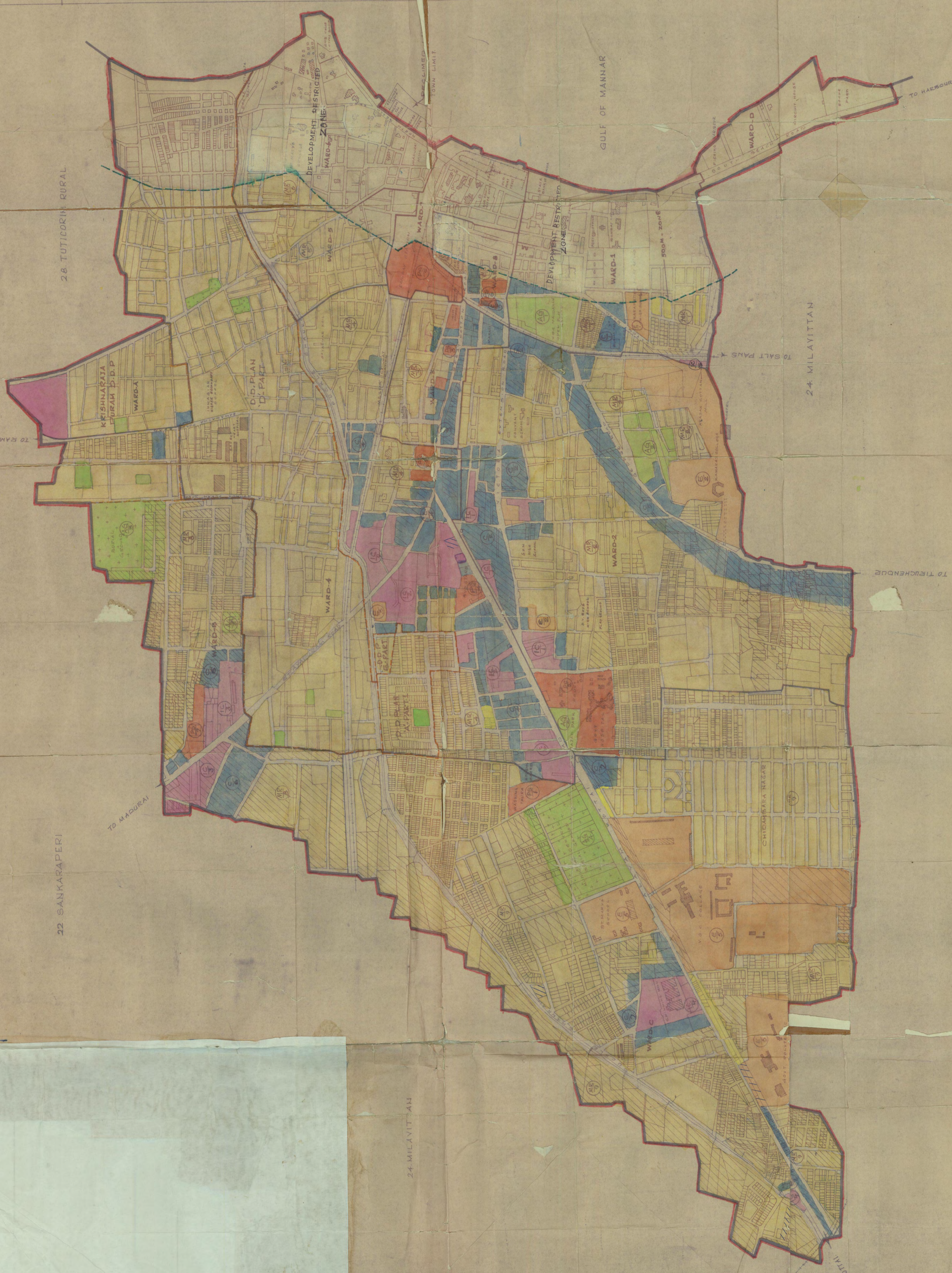
TUTICORIN TOWN

REFERENCE

- TOWN BOUNDARY
- WARD BOUNDARY
- ROADS
- RAILWAY LINE
- WATER BODIES
- FREE ZONE
- DECLARED PARK & PLAY FIELD
- SANCTIONED D.D PLAN BOUNDARY

USE ZONE

- EXISTING
- RESIDENTIAL
- COMMERCIAL
- INDUSTRIAL
- EDUCATIONAL
- PUBLIC & SEMI PUBLIC
- AGRICULTURAL
- DEVELOPMENT RESTRICTED ZONE



CHAIRMAN / MEMBER SECRETARY, COMMISSIONER
TUTICORIN LOCAL PLANNING AUTHORITY

DEPUTY DIRECTOR OF TOWN & COUNTRY PLANNING
GOVERNMENT OF TAMILNADU
MADRAS

DIRECTOR OF TOWN & COUNTRY PLANNING
GOVERNMENT OF TAMILNADU



OFFICE OF THE DEPUTY DIRECTOR OF TOWN & COUNTRY PLANNING,
TIRUNELVELI - KANNI KUMARI REGION,
TIRUNELVELI-2

TUTICORIN LOCAL PLANNING AREA - MASTER PLAN