

**Tiruvavarur Local Planning Area**  
**Thiruvavarur District**

**Review Consent Master Plan**

**(Review Consent as per G.O.Ms.No.133, Housing  
&Urban Development (UD 4.2) Department,  
Dated: 21.04.2005)**



1400

L.W. 26/10/48 31

GOVERNMENT OF TAMILNADU

ABSTRACT

Master Plan – Tiruvarur local planning area – consent of the Government to the publication of a notice of the preparation of the modified master plan --Orders – Issued.

HOUSING AND URBAN DEVELOPMENT (UD4.2) DEPARTMENT

G.O.Ms.No.133

Dated 21.04.2005.

READ:

1. G.O.Ms.No.22, Housing and Urban Development Department, dated 05.01.90.
2. From the Commissioner of Town and Country Planning, Letter Roc.No.26506/01(1)/MP3,, dated 07.08.2003.

3/5

ORDER:

In the Government order first read above, the Government have accorded approval under section 28 of the Tamil Nadu Town and Country Planning Act, 1971 (Tamil Nadu Act 35 of 1972), to the master plan for the Tiruvarur local planning area. As per the provisions contained in clause (b) sub-section (2) of section 32 of the said Act, once in every five years, after the date on which the master plan for an area comes into operation, the local planning authority may and if so, directed by the Government, shall after carrying out such fresh surveys as may be considered necessary and in consultation with the regional planning authority and the local authorities concerned, review the master plan and make such modifications in such plan wherever necessary and submit the modified master plan for the approval of the Government.

2. The Commissioner of Town and Country Planning in his letter second read above, has stated that by virtue of the provisions contained in clause (b) of sub-section (2) of section 32 of the said Act, the Tiruvarur local planning authority has reviewed the existing master plan for that planning area on its own accord and prepared a draft modified master plan for the Tiruvarur local planning area after taking into account of all the latest developments and future requirements. The Commissioner of Town and Country Planning has requested the Government to accord consent to the draft modified master plan of the Tiruvarur local planning area.

3. In exercise of the powers conferred by sub-section (2) of section 24 of the Tamil Nadu Town and Country Planning Act, 1971 (Tamil Nadu Act 35 of 1972), the Governor of Tamil Nadu hereby gives his consent to the Tiruvarur local planning authority to the publication of a notice under section 26 of the said Act, of the preparation of the modified master plan for Tiruvarur local planning area.

4. The draft modified master plan for the Tiruvarur local planning area, as consented to by the Government under sub-section (2) of the section 24 of the said Act, is returned to the Commissioner of Town and Country Planning, and he is requested to acknowledge its receipt. The Commissioner of Town and Country Planning is requested to ensure that the various

requirements specified in the said Act and in the Master Plan (Preparation, Publication and Sanction) Rules are strictly adhered to by the Tiruvarur local planning authority, before the modified master plan is resubmitted to the Government for their approval under section 28 of the said Act.

(BY ORDER OF THE GOVERNOR)

LAL RAWNA SAILO,  
SECRETARY TO GOVERNMENT.

- To
- 1. The Commissioner of Town and Country Planning, Chennai.2.
  - 2. The Commissioner, Tiruvarur Municipality, Tiruvarur.
  - 3. The Collector, Tiruvarur District, Tiruvarur.
  - 4. The Commissioner of Municipal Administration, Chennai.5
  - 5. The Member Secretary, Tiruvarur Local Planning Authority, Tiruvarur. (through Commissioner of Town and Country Planning, Chennai.2.)
  - 6. The Regional Deputy Director of Town and Country Planning, Tiruchirapalli.

Copy to:  
The Law Department, Chennai.9.

sf/sc

FORWARDED/BY ORDER/

*S. Beekaravala*  
SECTION OFFICER.

*ul*  
*29.4.05*

The Commissioner of Town and Country Planning, Chennai.2. The Commissioner, Tiruvarur Municipality, Tiruvarur. The Collector, Tiruvarur District, Tiruvarur. The Commissioner of Municipal Administration, Chennai.5 The Member Secretary, Tiruvarur Local Planning Authority, Tiruvarur. (through Commissioner of Town and Country Planning, Chennai.2.) The Regional Deputy Director of Town and Country Planning, Tiruchirapalli.

The Government of Madras, in exercise of the powers conferred by sub-section (1) of section 28 of the Town and Country Planning Act, 1973, has approved the modified master plan of Tiruvarur Municipality, Tiruvarur, for a period of five years from the date of its approval, subject to the conditions specified in the said Act and in the Master Plan (Preparation, Publication and Sanction) Rules, 1973.

The Government of Madras, in exercise of the powers conferred by sub-section (1) of section 28 of the Town and Country Planning Act, 1973, has approved the modified master plan of Tiruvarur Municipality, Tiruvarur, for a period of five years from the date of its approval, subject to the conditions specified in the said Act and in the Master Plan (Preparation, Publication and Sanction) Rules, 1973.

The Government of Madras, in exercise of the powers conferred by sub-section (1) of section 28 of the Town and Country Planning Act, 1973, has approved the modified master plan of Tiruvarur Municipality, Tiruvarur, for a period of five years from the date of its approval, subject to the conditions specified in the said Act and in the Master Plan (Preparation, Publication and Sanction) Rules, 1973.

## (TIRUVARUR MUNICIPAL LIMIT)

## SUNDARAVILAGAM VILLAGE

(Comprising S.F.No. 1 to 141)

Residential MR13

2, 5pt, 7, 8pt, 10 to 12, 61pt, 63pt, 96pt

MR15

87pt

MR14

89, 90pt, 93, 99, 100, 127pt, 130

Commercial C18

87pt

C19

90pt

Industrial

IC4

36pt, 37pt

IC5

78pt

IC6

80pt

Educational E5

60, 61pt, 66pt, 67pt, 68pt, 91, 92, 98

Public &amp; Semi Public

Agriculture Ag20

4, 63pt, 64, 66pt, 67pt,

Ag16

13 to 23, 25, 28 to 31, 43, 45, 46, 48 to 51, 53 to 56

58, 61pt, 96pt, 97, 101pt, 102pt, 103, 108, 109, 126,

127pt, 128, 129

Ag17

105, 106, 111, 113 to 118, 119pt, 120, 131 to 137,

138pt, 139pt, 140, 141

Ag19

68pt, 69, 70, 72 to 74, 76pt, 77, 78pt, 80pt, 83pt,

124, 125

Ag18

82, 85, 86pt

Waterbodies

1, 3, 5pt, 8pt, 24/26, 27, 34, 35, 38, 44, 47, 52, 57

59, 65, 71, 75, 79, 94, 95, 112

Transportation (Existing road)

6, 9, 62, 81, 84, 88, 121 to 123

Railway line

32, 41, 42, 104, 107, 110

Proposed ring road

76pt, 83pt, 86pt, 101pt, 102pt, 119pt, 138pt, 139pt

77

**THIRUVARUR TALUK**  
**V.No.. 1. THANDALAI VILLAGE**

**Comprising S.F. No. 1 to 493**

S.F. No. 11	Clubbed with S.F. No. 10
S.F. No. 14	Clubbed with S.F. No. 13
S.F. No. 17	Clubbed with S.F. No. 16
S.F. No. 20	Clubbed with S.F. No. 19
S.F. No. 26	Clubbed with S.F. No. 25
S.F. No. 28	Clubbed with S.F. No. 27
S.F. No. 36 TO 38	Clubbed with S.F. No. 15
S.F. No. 53	Clubbed with S.F. No. 52
S.F. No. 57	Clubbed with S.F. No. 56
S.F. No. 63	Clubbed with S.F. No. 62
S.F. No. 65	Clubbed with S.F. No. 64
S.F. No. 69 & 70	Clubbed with S.F. No. 68
S.F. No. 75, 76 & 79	Clubbed with S.F. No. 74
S.F. No. 97	Clubbed with S.F. No. 96
S.F. No. 104	Clubbed with S.F. No. 103
S.F. No. 106	Clubbed with S.F. No. 105
S.F. No. 112	Clubbed with S.F. No. 111
S.F. No. 114 & 115	Clubbed with S.F. No. 108
S.F. No. 150 TO 158	Included in Tiruvarur Mpl Limit
S.F. No. 160	Clubbed with 159
S.F. No. 162 & 163	Clubbed with S.F. No. 161
S.F. No. 166	Clubbed with S.F. No. 165
S.F. No. 169	Clubbed with S.F. No. 168
S.F. No. 171 & 172	Clubbed with S.F. No. 170
S.F. No. 175 & 176	Clubbed with S.F. No. 174
S.F. No. 179 & 180	Clubbed with S.F. No. 178
S.F. No. 183	Clubbed with S.F. No. 182
S.F. No. 185	Clubbed with S.F. No. 184
S.F. No. 191	Clubbed with S.F. No. 190
S.F. No. 202	Clubbed with S.F. No. 201
S.F. No. 205	Clubbed with S.F. No. 204
S.F. No. 207	Clubbed with S.F. No. 206
S.F. No. 211	Clubbed with S.F. No. 210
S.F. No. 213	Clubbed with S.F. No. 212

S.F. No. 218 & 219	Clubbed with S.F. No. 217
S.F. No. 224	Clubbed with S.F. No. 223
S.F. No. 227	Clubbed with S.F. No. 226
S.F. No. 231	Clubbed with S.F. No. 230
S.F. No. 233	Clubbed with S.F. No. 232
S.F. No. 235	Clubbed with S.F. No. 234
S.F. No. 237	Clubbed with S.F. No. 236
S.F. No. 243	Clubbed with S.F. No. 242
S.F. No. 245 & 246	Clubbed with S.F. No. 244
S.F. No. 252	Clubbed with S.F. No. 251
S.F. No. 256 to 258	Clubbed with S.F. No. 255
S.F. No. 260, 261	Clubbed with S.F. No. 259
S.F. No. 263, 264	Clubbed with S.F. No. 262
S.F. No. 266	Clubbed with S.F. No. 265
S.F. No. 268 & 269	Clubbed with S.F. No. 267
S.F. No. 272	Clubbed with S.F. No. 265
S.F. No. 273	Clubbed with S.F. No. 271
S.F. No. 275 & 276	Clubbed with S.F. No. 274
S.F. No. 279	Clubbed with S.F. No. 278
S.F. No. 285	Clubbed with S.F. No. 284
S.F. No. 288 & 289	Clubbed with S.F. No. 287
S.F. No. 292	Clubbed with S.F. No. 28 i
S.F. No. 294	Clubbed with S.F. No. 293
S.F. No. 296 to 299	Clubbed with S.F. No. 295
S.F. No. 301 to 303	Clubbed with S.F. No. 300
S.F. No. 306	Clubbed with S.F. No. 305
S.F. No. 308 & 309	Clubbed with S.F. No. 307
S.F. No. 310	Clubbed with S.F. No. 290
S.F. No. 315 & 316	Clubbed with S.F. No. 314
S.F. No. 319	Clubbed with S.F. No. 318
S.F. No. 321	Clubbed with S.F. No. 320
S.F. No. 323 to 325	Clubbed with S.F. No. 322
S.F. No. 328	Clubbed with S.F. No. 327
S.F. No. 330	Clubbed with S.F. No. 329
S.F. No. 333 to 335	Clubbed with S.F. No. 332
S.F. No. 337	Clubbed with S.F. No. 331
S.F. No. 388	Clubbed with S.F. No. 336

S.F. No. 344 & 345	Clubbed with S.F. No. 343
S.F. No. 347	Clubbed with S.F. No. 343
S.F. No. 348	Clubbed with S.F. No. 346
S.F. No. 350	Clubbed with S.F. No. 349
S.F. No. 353 & 354	Clubbed with S.F. No. 352
S.F. No. 356	Clubbed with S.F. No. 355
S.F. No. 360	Clubbed with S.F. No. 358
S.F. No. 362	Clubbed with S.F. No. 361
S.F. No. 363	Clubbed with S.F. No. 359
S.F. No. 368 to 371	Clubbed with S.F. No. 367
Residential	
PR28	3pt, 4, 10, 15, 16, 34, 40, 64, 71 to 74 89,96,103,105,107to111,113,116,117,119to127,128pt 129pt,130,138,142,144,146to148,249to251,253pt 388,389,392to396,450,453 259pt, 265pt, 277, 280 to 284, 286, 287 290, 291, 293, 295, 300, 304, 305, 307, 311 to 314, 340 to 343, 346, 349, 351, 352, 355, 358
<del>PR29</del>	
<u>MR17</u>	<u>159, 161, 165, 167, 168, 170, 173, 174, 177</u> 178, 181, 182, 184, 186 to 190, 192 to 194 196 to 201, 203, 204, 206, 208 to 210, 212 215 to 217, 220 to 223, 225, 226, 228, 230 232, 234, 236, 239 to 242, 244, 452, 478 481, 489 to 493
MR16	418, 419, 421, 463 to 477, 484, 485
Commercial C22	68, 82 to 84, 85 pt
Commercial C24	417
Industrial IC36	128pt, 129pt
Industrial IC8	139pt, 413pt, 414pt
Industrial IC35	247pt
Educational	NIL
Public & Semi Public P & S	387,397 to 401,404 to 406, 408 to 410 414pt, 415, 416, 422,423, 425 to 427, 430, 431 433 to 449, 454 to 462
Agriculture AG36	2pt, 3pt, 5pt, 6 to 8, 12, 13, 18, 19, 21 to 24 29 to 33, 35, 39, 41 to 43, 45, 46 48 to 51, 54, 56, 58, 59, 61pt, 62, 67, 77, 78, 85pt

Missing No

81, 86-88,

90-93; 94pt,

95, 98-102

150-158

338

Agriculture AG33

Water bodies

Transportation

Existing Road

Proposed ring road

Railway line

133, 139pt, 140, 149, 379 to 383, 388, 411, 412, 413pt

255, 259pt, 262, 265pt, 267, 270, 271, 274

278, 318, 320, 322, 327, 329, 331, 332

336, 359, 361, 365, 366pt, 367pt

1pt, 9, 25, 27, 44, 47, 52, 61pt, 80

94pt, 118, 131, 132, 134 to 137, 141, 145, 164

195, 229, 247pt, 253pt, 317, 326, 339

357, 364, 372 to 378, 385, 386, 402

403, 407, 420, 424, 428, 429, 432, 479, 480

486, 488

55, 60, 66, 143, 214, 238, 248, 384, 390, 391, 451, 482

483, 487

1pt, 2pt, 5pt, 366pt, 367pt

254

**WARD 3, BLOCK 1**

(Excluded from Tiruvarur Municipality included in Thandalai village within composite LPA)  
which is in T.S. No.S.

**(Comprising T.S. No.. 1 to 126)**

Residential

MR16

1, 3 to 5, 8 to 13, 15 to 21, 23 to 27

29 to 34, 36, 38, 39, 41 to 51

53 to 62, 64 to 68, 70 to 74

76 to 83, 85 to 95, 97, 100, 102 to 105

107 to 114, 116 to 122, 124

Commercial

NIL

Industrial

NIL

Educational

NIL

Public &amp; Semi public

NIL

Agriculture

NIL

Waterbodies

6, 7, 22, 28, 35, 69, 98, 126

Transportation

2, 14, 37, 40, 52, 63, 75, 84, 96

Existing road

99, 101, 106, 115, 123, 125



## V.No. 2 VIJAYAPURAM VILLAGE

## Residential

P.R. 25

16, 18 to 24, 26 to 28, 29 pt, 36 to 39  
49pt, 61, 62, 64, 65, 68pt, 69, 70pt, 72, 73pt, 74,  
75, 76, 78, 79, 80pt, 81.

Commercial

NIL

Industrial

IC.27

51pt, 53pt, 54pt

IC.28

3pt, 8pt, 9pt, 10pt

Educational

NIL

Public &amp; semipublic

NIL

Agriculture

Ag.33

1, 2, 3pt, 4, 5pt, 6pt, 7pt, 8pt, 9pt, 10pt, 11, 12  
13, 14pt, 15, 17pt, 29pt, 30pt, 31 to 34, 35pt, 40pt  
49pt, 50, 51pt, 53pt, 54pt, 55 to 60, 66,  
67pt, 68pt, 70pt, 71  
5pt, 6pt, 7pt, 17pt, 30pt, 35pt, 40pt, 47, 48, 52,  
63, 67pt, 80pt, 82, 83

Water bodies

Transportation

Existing Roads

14pt, 25, 73pt, 77

Railway

41 to 46

Proposed ring road

17pt

V. No.. 3 TIRUVARUR THERKU SETHI VILLAGE

Comprising T.S. No. 1-78

S.F. No. 6	Clubbed with S.F. No. 5
S.F. No. 15	Clubbed with S.F. No. 14
S.F. No. 26 & 27	Clubbed with S.F. No. 17
S.F. No. 32 & 34	Clubbed with S.F. No. 31
S.F. No. 41 & 42	Clubbed with S.F. No. 40
S.F. No. 47 & 48	Clubbed with S.F. No. 46
S.F. No. 50 to 52	Clubbed with S.F. No. 49
S.F. No. 58	Clubbed with S.F. No. 57
S.F. No. 60	Clubbed with S.F. No. 59
S.F. No. 67	Clubbed with S.F. No. 66
Residential PR15	17pt, 40pt, 68pt
Commercial	NIL
Industrial	NIL
Educational	NIL
Public & Semi public	NIL
Agriculture	
Ag 27	3 to 5, 7 to 14, 17pt, 19, 20, 22 to 24, 28, 30, 31, 35 to 37, 39, 40pt, 44 to 46, 49, 54, 55, 59, 61, 63, 64, 66, 68pt, 69 to 73, 75 to 78.
Waterbodies	1, 2, 16, 18, 21, 25, 29, 33, 38, 40pt, 43, 53, 56, 62, 65, 68pt, 74.
Transportation	
Existing road	NIL

## V. No. 5 KILAKAVATHAKUDI VILLAGE

Comprising S.F. No. 1 to 213

S.F. No. 6	Clubbed with S.F. No. 5
S.F. No. 12	Clubbed with S.F. No. 11
S.F. No. 16	Clubbed with S.F. No. 15
S.F. No. 18 & 19	Clubbed with S.F. No. 17
S.F. No. 24	Clubbed with S.F. No. 23
S.F. No. 31	Clubbed with S.F. No. 30
S.F. No. 34 & 35	Clubbed with S.F. No. 33
S.F. No. 38	Clubbed with S.F. No. 37
S.F. No. 47	Clubbed with S.F. No. 46
	Clubbed with S.F. No. 49
S.F. No. 53	Clubbed with S.F. No. 52
S.F. No. 57	Clubbed with S.F. No. 54
S.F. No. 62	Clubbed with S.F. No. 61
S.F. No. 67 to 75	Clubbed with S.F. No. 66
S.F. No. 77 to 79	Clubbed with S.F. No. 76
S.F. No. 82	Clubbed with S.F. No. 81
S.F. No. 85 & 86	Clubbed with S.F. No. 84
S.F. No. 90 to 94	Clubbed with S.F. No. 89
S.F. No. 97 to 107	Clubbed with S.F. No. 96
S.F. No. 124	Clubbed with S.F. No. 123
S.F. No. 132	Clubbed with S.F. No. 131
S.F. No. 135	Clubbed with S.F. No. 134
S.F. No. 137	Clubbed with S.F. No. 136
S.F. No. 143	Clubbed with S.F. No. 142
S.F. No. 145	Clubbed with S.F. No. 144
S.F. No. 148 to 150	Clubbed with S.F. No. 141 & 142
S.F. No. 153 to 155 & 157	Clubbed with S.F. No. 152
S.F. No. 160 & 161	Clubbed with S.F. No. 159
S.F. No. 168	Clubbed with S.F. No. 167
S.F. No. 178 & 179	Clubbed with S.F. No. 177
S.F. No. 181	Clubbed with S.F. No. 180
S.F. No. 185	Clubbed with S.F. No. 183
S.F. No. 194	Clubbed with S.F. No. 193
S.F. No. 211	Included in Tiruvarur Municipality

## Residential

M18

66, 76, 84, 87, 89, 96, 108 to 121, 123pt  
 125 to 131, 133, 134, 136, 164 to 167, 170 to  
 177, 180, 182pt, 193pt

M19

2, 4, 5, 7 to 11, 13 to 15, 17, 20 to 23, 25 to 28  
 30, 32, 33, 36pt, 37, 40, 41, 46, 48, 49pt, 52, 54,  
 55, 59, 60, 61, 63, 64, 140 to 142, 144  
 146, 147, 152, 156, 158, 159, 162.

Commercial

NIL

Industrial-1C11

182pt

Educational

NIL

Public &amp; Semi public

NIL

Agriculture AG24

81, 183, 184, 186, 188, 189, 191, 192, 193pt  
 195 to 200, 202 to 206, 208

Agriculture AG27

1, 3, 44, 45

Waterbodies

29, 42, 43, 49pt, 56, 58, 80, 83  
 88, 95, 122, 123pt, 139, 151, 169, 187, 190,  
 201, 207, 209, 210.

Transportation

Existing road

36pt, 39, 65, 138, 163

Railwayline

212, 213

Missing Numbers

50, 51, 65

## V. No. 6 RAMAKAYE VILLAGE

Comprising S. F. No.. 1 to 153

Residential PR15

101, 133 to 136

Residential MR19

1, 2, 4pt, 18, 47, 48, 50 to 52, 54 to 64  
66 to 70, 75pt

Commercial

NIL

Industrial IC13

147pt, 150pt

Educational

NIL

Public &amp; Semipublic

NIL

Agriculture

Ag27

4pt, 5, 7, 8pt, 9 to 16, 19 to 27, 29 to 39,  
41 to 44, 74, 75pt, 76, 77, 79 to 83, 86 to 92,  
94 to 99, 103 to 114, 116 to 124, 127 to 131,  
137 to 139, 141 to 143, 145, 146, 147pt, 148,  
149, 150pt, 151 to 153

Waterbodies

6, 8pt, 17, 28, 40, 45, 49, 53, 65, 71, 78, 84,  
85, 93, 100, 115, 125, 126, 132, 140, 144

Transportation

Existing road

102

Railway ' ne

3, 46, 72, 73

## V.No. 7 PALLIVARAMANGALAM VILLAGE ✓

## Comprising S.F. No.. 1 to 166

S.F. No. 11 & 12	Clubbed with S.F. No. 10
S.F. No. 25	Clubbed with S.F. No. 24
S.F. No. 42	Clubbed with S.F. No. 41
S.F. No. 46	Clubbed with S.F. No. 44
S.F. No. 50	Clubbed with S.F. No. 49
S.F. No. 52, 53 & 54	Clubbed with S.F. No. 51
S.F. No. 61	Clubbed with S.F. No. 60
S.F. No. 63	Clubbed with S.F. No. 62
S.F. No. 67	Clubbed with S.F. No. 66
S.F. No. 70	Clubbed with S.F. No. 68
S.F. No. 71	Clubbed with S.F. No. 58
S.F. No. 72	Clubbed with S.F. No. 69
S.F. No. 83	Clubbed with S.F. No. 82
S.F. No. 88	Clubbed with S.F. No. 87
S.F. No. 96	Clubbed with S.F. No. 95
S.F. No. 108	Clubbed with S.F. No. 107
S.F. No. 123	Clubbed with S.F. No. 122
S.F. No. 134	Clubbed with S.F. No. 133
S.F. No. 139	Clubbed with S.F. No. 138
S.F. No. 155	Clubbed with S.F. No. 146

## Residential

PR14

51pt, 66, 95, 107, 133, 136, 138pt

Commercial

NIL

Industrial

NIL

Educational

NIL

Public &amp; Semi public

NIL

Agriculture

Ag 26

34pt, 35pt, 36pt, 37 to 41, 43pt, 58pt, 59pt,  
60, 62, 64pt, 65pt, 146pt, 147pt, 149.

Ag 27

151 to 154, 156pt, 157, 158, 160

2 to 4, 6 to 10, 13, 15, 19, 21 to 24, 26 to 29<sup>25</sup>,  
31, 32, 34pt, <sup>35pt</sup>36pt, 43pt, 44pt, 45, 47 to 49, <sup>46pt</sup>5055, 56, 58pt, 59pt, 64pt, 65pt, 69, 73, <sup>71pt, 72</sup>

75 to 82, 84, 87, 89, 90, 93, 98 to 101, 103 to

183 188

105, 110, 111, 113 to 116, 119 to 122,  
124, 125, 127 to 130, 132, 135, 137,  
141, 142pt, 143pt, 144pt, 145, 156pt.

Water bodies

1, 5, 14, 16 to 18, 20, 30, 33, 51pt, 57, 85, 86,  
94, 97, 106, 109, 112, 117, 118, 126, 131, 140, 148  
150, 159, 161 to 163.

Transportation

Existing road

68, 74, 91, 92, 102, 164 to 166

Proposal Ring road

34pt, 35pt, 36pt, 43pt, 44pt, 58pt, 59pt, 64pt,  
65pt, 138pt, 142pt, 143pt, 144ptr[, 146pt, 147pt  
156pt.

## V. No. 8, PALAVANAKKUDI VILLAGE

Comprising S.F. No.. 1 to 246

S.F. No. 5	Clubbed with S.F. No. 4
S.F. No. 8	Clubbed with S.F. No. 7
S.F. No. 13	Clubbed with S.F. No. 12
S.F. No. 16	Clubbed with S.F. No. 15
S.F. No. 19	Clubbed with S.F. No. 18
S.F. No. 28 & 29	Clubbed with S.F. No. 27
S.F. No. 34	Clubbed with S.F. No. 14
S.F. No. 41	Clubbed with S.F. No. 40
S.F. No. 43	Clubbed with S.F. No. 42
S.F. No. 46	Clubbed with S.F. No. 45
S.F. No. 51	Clubbed with S.F. No. 50
S.F. No. 54	Clubbed with S.F. No. 53
S.F. No. 58	Clubbed with S.F. No. 57
S.F. No. 60	Clubbed with S.F. No. 57
S.F. No. 64	Clubbed with S.F. No. 63
S.F. No. 70, 72, 73	Clubbed with S.F. No. 67
S.F. No. 74	Clubbed with S.F. No. 49
S.F. No. 77	Clubbed with S.F. No. 76
S.F. No. 83	Clubbed with S.F. No. 82
S.F. No. 88	Clubbed with S.F. No. 87
S.F. No. 91	Clubbed with S.F. No. 90
S.F. No. 101	Clubbed with S.F. No. 100
S.F. No. 103	Clubbed with S.F. No. 102
S.F. No. 108, 109, 110	Clubbed with S.F. No. 107
S.F. No. 115	Clubbed with S.F. No. 114
S.F. No. 117 & 118	Clubbed with S.F. No. 116
S.F. No. 123	Clubbed with S.F. No. 122
S.F. No. 125 & 126	Clubbed with S.F. No. 124
S.F. No. 132	Clubbed with S.F. No. 131
S.F. No. 134	Clubbed with S.F. No. 133
S.F. No. 138	Clubbed with S.F. No. 129
S.F. No. 140 & 141	Clubbed with S.F. No. 139
S.F. No. 148 & 149	Clubbed with S.F. No. 147
S.F. No. 153 & 154	Clubbed with S.F. No. 147
S.F. No. 156	Clubbed with S.F. No. 147
	Clubbed with S.F. No. 112



S.F. No. 160

S.F. No. 168

S.F. No. 183

S.F. No. 186

S.F. No. 223, 224, 234, 235, 236, 237, 238

Clubbed with S.F. No. 159

Clubbed with S.F. No. 167

Clubbed with S.F. No. 182

Clubbed with S.F. No. 185

Included in the Mpl limit.

## Residential

PR15

PR16

82, 90

7, 12pt, 44, 52, 63, 67, 104, 107, 111 to 113,

116pt, 120pt, 151, 172pt, 185, 187, 189pt

197pt, 206, 210, 215pt, 218 to 222, 226, 227

NIL

PR17

Commercial

NIL

Industrial

129pt

IC14

NIL

Educational

NIL

Public &amp; Semi public

Agriculture

Ag27

17, 18pt, 21pt, 22 to 27, 30 to 32, 39, 40, 42,

45, 48 to 50, 53, 55 to 57, 59, 61, 62, 69, 71,

75, 76, 78, 79, 81, 85 to 87, 89, 93, 94, 96, 97

100, 102, 116pt, 120pt,

121pt, 122, 124, 129pt, 139pt, 155pt, 157pt,

164pt, 165 to 167, 171pt, 172pt, 173, 175,

177 to 181, 189pt, 190 to 196, 197pt, 198,

200, 202 to 205, 207, 209, 212, 230 to 233, 241pt.

242 to 244.

Ag28

2 to 4, 6, 10, 11, 12pt, 14, 15, 18pt, 35 to 37

38pt, 127pt, 128, 129pt, 130, 131, 133,

136, 137, 142 to 144, 146, 147, 150, 152,

155pt, 159, 161 to 163, 164pt, 170, 171pt, 241pt

Water bodies

1, 9, 20, 47, 65, 66, 68, 80, 84, 92, 95, 98, 99

105, 106, 135, 145, 158, 169, 174, 182, 188, 199

201, 208, 211, 215pt, 216, 217, 228, 229, 239, 240.

Transportation

Existing Road

33, 114, 119, 176, 184, 213, 214, 225,

245, 246.

Proposal Ring Road

18pt, 21pt, 38pt, 112pt, 121pt, 127pt, 129pt,

139pt, 155pt, 157pt, 164pt, 171pt, 241pt.

## V. No. 9 SUNDARAVILAGAM (PART)

(S.F. No.S 1 TO 141 included in Mpl Limit) 142 to 148 part of sundaravilagam village.)

Residential	NIL
Commercial	NIL
Industrial	NIL
Educational	NIL
Public & Semi public	NIL
Agriculture Ag30	143, 144pt, 145 to 147
Waterbodies	142, 144pt, 148
Transportation	
Existing road	NIL

## WARD 4, BLOCK 12

Comprising T.S. No.. 655 TO 750

Excluded from Tiruvarur Municipal limit included in sundaravilagam village limit as per T.S.Nos.)

Residential	
PR22	659pt, 662 to 666, 668, 669pt, 671 to 677, 679 to 683, 685, 687, 690 to 707, 709, 712, 713pt, 730pt, 731 to 736, 738 to 740, 748pt.
Commercial	NIL
Industrial	NIL
Educational	NIL
Public & Semi public	NIL
Agriculture Ag30	655, 657, 658, 659pt, 710pt, 711pt, 714 to 720, 721pt, 722pt, 723, 724pt, 725, 726, 727pt, 728pt 746, 747, 748pt, 749
Waterbodies	656, 669pt, 686, 710pt, 711pt, 713pt, 721pt, 722pt, 724pt, 727pt, 728pt, 729, 730pt, 750
Transportation	
Existing road	660, 661, 667, 670, 678, 684, 688, 639, 708, 737, 741 to 745.

91  
V.No. 10 ADIYAKKAMANGALAM VILLAGE

Comprising S. F. No. 1 to 296

S.F. No. 16	Clubbed with S.F. No. 15
S.F. No. 18 to 20	Clubbed with S.F. No. 17
S.F. No. 22 & 23	Clubbed with S.F. No. 21
S.F. No. 26	Clubbed with S.F. No. 25
S.F. No. 29	Clubbed with S.F. No. 28
S.F. No. 32	Clubbed with S.F. No. 31
S.F. No. 36	Clubbed with S.F. No. 35
S.F. No. 39	Clubbed with S.F. No. 38
S.F. No. 42	Clubbed with S.F. No. 41
S.F. No. 44	Clubbed with S.F. No. 43
S.F. No. 58	Clubbed with S.F. No. 57
S.F. No. 74	Clubbed with S.F. No. 73
S.F. No. 80 & 81	Clubbed with S.F. No. 79
S.F. No. 85 & 86	Clubbed with S.F. No. 84
S.F. No. 88	Clubbed with S.F. No. 87
S.F. No. 90	Clubbed with S.F. No. 89
S.F. No. 94	Clubbed with S.F. No. 93
S.F. No. 101	Clubbed with S.F. No. 100
S.F. No. 111	Clubbed with S.F. No. 110
S.F. No. 113	Clubbed with S.F. No. 112
S.F. No. 116	Clubbed with S.F. No. 115
S.F. No. 119	Clubbed with S.F. No. 118
S.F. No. 123	Clubbed with S.F. No. 122
S.F. No. 125	Clubbed with S.F. No. 124
S.F. No. 127	Clubbed with S.F. No. 126
S.F. No. 128	Clubbed with S.F. No. 124
S.F. No. 132	Clubbed with S.F. No. 131
S.F. No. 134 & 135	Clubbed with S.F. No. 133
S.F. No. 142 & 143	Clubbed with S.F. No. 141
S.F. No. 146	Clubbed with S.F. No. 145
S.F. No. 157	Clubbed with S.F. No. 156
S.F. No. 159	Clubbed with S.F. No. 158
S.F. No. 168	Clubbed with S.F. No. 167
S.F. No. 172 to 174	Clubbed with S.F. No. 171

S.F. No. 177 & 178  
 S.F. No. 184  
 S.F. No. 191  
 S.F. No. 198 to 201  
 S.F. No. 204  
 S.F. No. 211 & 212  
 S.F. No. 216  
 S.F. No. 218 & 219  
 S.F. No. 222  
 S.F. No. 225  
 S.F. No. 226  
 S.F. No. 233  
 S.F. No. 240  
 S.F. No. 254  
 S.F. No. 262  
 S.F. No. 268 & 269  
 S.F. No. 274 & 275  
 S.F. No. 278 & 279  
 S.F. No. 280  
 S.F. No. 282 & 283  
 S.F. No. 285

Clubbed with S.F. No. 176  
 Clubbed with S.F. No. 183  
 Clubbed with S.F. No. 190  
 Clubbed with S.F. No. 197  
 Clubbed with S.F. No. 203  
 Clubbed with S.F. No. 210  
 Clubbed with S.F. No. 214  
 Clubbed with S.F. No. 217  
 Clubbed with S.F. No. 221  
 Clubbed with S.F. No. 221  
 Clubbed with S.F. No. 220  
 Clubbed with S.F. No. 232  
 Clubbed with S.F. No. 239  
 Clubbed with S.F. No. 253  
 Clubbed with S.F. No. 261  
 Clubbed with S.F. No. 267  
 Clubbed with S.F. No. 273  
 Clubbed with S.F. No. 277  
 Clubbed with S.F. No. 276  
 Clubbed with S.F. No. 270  
 Clubbed with S.F. No. 284

Residential

PR18

68, 78, 161, 167, 175, 176, 179, 180, 182  
 183, 186 to 190, 192 to 197, 207 to 210, 213,  
 214, 217, 220, 221, 224.

PR19

15, 17, 24, 27, 71 to 73, 76, 79, 83, 84, 87, 91  
 99pt, 103, 106, 108pt, 120 to 122, 124, 126pt,  
 130, 131, 133pt, 137, 144, 145pt, 147pt, 149,  
 151 to 156, 158, 160, 229 to 231, 261pt, 270pt,  
 276, 277, 281pt, 286, 287

Commercial

Industrial

IC15

IC16

NIL

145pt

8pt, 9pt, 31pt

IC18

54pt, 55pt

Educational E9

108pt

Public & Semipublic

P & S 14

Agriculture Ag29

126pt, 139pt

1, 2, 6, 7, 8pt, 9pt, 10 to 14, 21, 25, 28,

30, 31pt, 33 to 35, 37, 38, 41, 43, 45 to 47,

52, 53, 54pt, 55pt, 56, 57, 59, 63, 64pt, 70pt,

89, 93, 96, 98, 99pt, 100, 102, 104, 105pt, 107

109, 110pt, 112pt, 114, 115, 118, 136, 139pt,

140, 141, 163 to 165, 171, 203, 205, 227, 232,

234 to 236, 239, 242 to 244, 246 to 248, 250 to

253, 255, 258 to 260, 261pt, 263 to 265, 267,

270pt, 271 to 273, 281pt, 288, 290 to 292

Water bodies

3 to 5, 40, 48 to 51, 60, 61, 65, 66, 75, 92, 95,

97, 105pt, 110pt, 112pt, 117, 129, 133pt, 138,

147pt, 162, 166, 169, 181, 185, 202, 217,

223, 237, 238, 241, 245, 249, 256, 257, 289, 293

294

Transportation

67, 69, 77, 82, 148, 150, 170, 206, 228, 284,

Existing road

295, 296

62, 266

Railway line

64 pt, 70 pt

Proposed ring road

## V.No. 36, ALIVALAM &amp; KARUPPUR VILLAGE

## Comprising S.F. No. 1 to 285)

S.F. No. 19	Clubbed with S.F. No. 17
S.F. No. 21	Clubbed with S.F. No. 20
S.F. No. 25	Clubbed with S.F. No. 24
S.F. No. 39	Clubbed with S.F. No. 38
S.F. No. 56	Clubbed with S.F. No. 55
S.F. No. 63	Clubbed with S.F. No. 62
S.F. No. 101	Clubbed with S.F. No. 99
S.F. No. 138	Clubbed with S.F. No. 136
S.F. No. 141	Clubbed with S.F. No. 140
S.F. No. 143	Clubbed with S.F. No. 142
S.F. No. 145	Clubbed with S.F. No. 144
S.F. No. 157	Clubbed with S.F. No. 156
S.F. No. 161	Clubbed with S.F. No. 160
S.F. No. 165, 166	Clubbed with S.F. No. 162
S.F. No. 167 to 169	Clubbed with S.F. No. 163
S.F. No. 172	Clubbed with S.F. No. 171
S.F. No. 177	Clubbed with S.F. No. 176
S.F. No. 181	Clubbed with S.F. No. 180

## Residential

PR20	210, 229, 231, 249, 251
PR21	96pt, 100pt, 102, 105, 111, 112pt, 162pt, 163pt, 164pt, 173pt, 174pt, 198, 203, 234, 238.

## Commercial

NIL

## Industrial

IC17	269pt
IC18	15pt, 129pt, 131pt, 132, 133, 134pt, 137pt, 139pt
IC19	118pt, 150pt, 151pt, 153pt
IC20	115pt, 116pt
IC21	98pt, 100pt
IC22	171pt
IC23	235pt
IC24	160pt, 241pt
Educational E10	163pt

Public & Semipublic  
Agriculture Ag29

NIL

1 to 11, 15pt, 16 to 18, 20, 22 to 24, 26 to 28,  
30 to 38, 40 to 42, 44 to 51, 52pt, 53 to 55, 57 to  
59, 61, 62, 64 to 68, 70 to 72, 74, 75pt, 76pt, 77  
78pt, 79, 81, 82pt, 83pt, 84, 86, 88, 89pt, 90pt,  
91pt, 94pt, 110pt, 113pt, 114pt, 124pt, 125pt,  
126 to 128, 129pt, 130, 131pt, 134pt, 135, 136,  
137pt, 139pt, 140pt, 142pt, 144, 146pt, 204 to  
209, 211 to 217, 219 to 228, 230, 250, 252 to  
256, 258 to 268, 269pt, 270 to 285.

A30

83pt, 89pt, 90pt, 92pt, 93, 94pt, 95, 96, 103,  
104, 107 to 109, 110pt, 112pt, 113pt, 114pt,  
115pt, 116pt, 117, 118, 119pt, 120, 121, 122pt,  
123pt, 140pt, 142pt, 147pt, 149, 150pt, 151pt,  
153pt, 154 to 156, 158, 160pt, 170, 171pt, 173pt,  
174pt, 175, 176, 178 to 180, 182 to 185, 187pt,  
189, 191

Ag30

192, 195, 196, 199 to 201, 202pt, 235pt, 236  
237, 239, 240, 241pt, 243 to 248.

Waterbodies

12 to 14, 29, 43, 69, 80, 87, 106, 148, 152, 159  
163pt, 164pt, 174pt, 186, 188, 190, 193, 194,  
197, 202pt, 218, 242, 257.

Transportation

Existing road

60, 73, 78pt, 85, 97, 99, 232, 233

Proposed Ring road

52pt, 75pt, 76pt, 82pt, 83pt, 89pt, 90pt, 91pt,  
92pt, 94pt, 110pt, 113pt, 114pt, 122pt, 123pt,  
124pt, 125pt, 140pt, 142pt, 146pt, 147pt, 187pt

96

V. No.. 37, VENKATESAPURAM VILLAGE

Comprising S.F. No. 1 to 139

Residential	
PR23	74pt, 124, 126 to 129, 130pt, 134pt, <del>136pt</del> , 138pt
PR24	93pt, 96pt, 97pt, 100pt, 103pt, 105pt, 106pt, 109 pt, 110pt, 111, 112, 113pt, 115, 116pt
Commercial C25	101pt
Industrial	
I.C. 25	23pt
Educational	NIL
Public & Semi public	NIL
Agriculture	
Ag30	1 to 22, 23pt, 24 to 34, 35pt, 38pt, 39pt, 40pt, 41pt, 56pt, 57pt, 58pt, 59pt, 60 to 73, 74pt, 75 to 77 79 to 81, 83, 85pt, 93pt, 94, 95, 96pt, 97pt, 98, 99, 100pt, 101, 102, 103pt, 105pt, 106pt, 107, 109pt, 113pt, 114, 116pt, 117 to 119, 122, 123, 125 130pt, 132, 133, 134pt, 135, 136pt, 137, 138pt, 139
Ag31	36, 37, 42 to 44, 46, 47, 49, 50, 51pt, 52pt, 53pt, 54pt, 55pt, 88pt, 90, 91.
Water bodies	45, 48, 78, 82, 84, 86, 87, 89pt, 92, 103pt, 104, 108, 110 pt, 120, 121, 131.
Transportation	
Existing Roads	NIL
Proposed ring road	35pt, 38pt, 39pt, 40pt, 41pt, 51pt, 52pt, 53pt, 54pt, 55pt, 56pt, 57pt, 58pt, 59pt, 85pt, 88pt, 89pt.



## V.No. 38, PULIVALAM VILLAGE

(Comprising S.F. No. 1 to 204)

Residential

PR24

1, 4, 5, 6pt, 57pt, 58pt, 73pt, 75pt, 76pt, 82pt,  
87pt, 112 to 115, 117pt, 118pt, 121pt  
122pt, 123pt, 124pt, 125, 126pt, 127pt, 128pt,  
129pt, 130pt, 132pt, 133pt, 134, 135pt, 138pt,  
141pt, 145pt, 146, 147, 148pt, 150, 153pt, 154 to  
158, 160, 161pt, 165pt, 166pt, 169pt, 170, 171pt  
172, 173pt, 174, 180, 181, 184pt, 190, 192 to 194

Commercial C25

25pt, 27pt, 68pt, 122pt, 123pt, 126pt, 127pt,  
129pt, 130pt, 132pt, 133pt, 135pt, 138pt, 153pt,  
161pt, 165pt, 166pt, 169pt, 171pt, 173pt

Industrial

IC25

200pt, 202pt

IC26

127pt, 128pt

Educational

E11

153pt

Agriculture

Ag30

68pt, 69 to 71, 73pt, 75pt, 76pt, 77, 78, 79pt,  
80, 81pt, 84pt, 93pt, 117pt, 118pt  
119, 120, 121pt, 124pt, 169pt, 175 to 178, 182, 183,  
184pt, 185, 188, 191, 195 to 199, 200pt, 201,  
202pt, 203, 204

Ag31

81pt, 82pt, 83pt, 84pt, 85, 86, 87pt, 90 to 92,  
93pt, 94pt, 95pt, 96pt, 97 to 100, 102 to 106,  
109, 110.

Ag32

2, 3, 6pt, 7 to 11, 12pt, 13pt, 14pt, 15pt, 16pt,  
17pt, 18pt, 20 to 24, 25pt, 26, 27pt, 53pt, 60pt,  
61pt, 63pt, 64, 65, 139, 140, 141pt, 142, 143,  
145pt

Ag34	12pt, 13pt, 14pt, 15pt, 16pt, 17pt, 18pt, 37 to 40, 42 to 48, 50, 53pt, 54, 55, 57pt, 58pt, 60pt, 61pt, 62.
Water bodies	29,30,32 to 41, 49, 56, 67, 72, 74, 88, 89, 101, 107, 108, 111, 116, 123pt, 144, 148pt, 159, 167, 168, 179, 189.
Transportation Existing road	28, 59, 66, 131, 136, 137, 149,151, 152, 162 to 164, 186, 187.
Railway line	19, 31, 51, 52
Proposed ring road	12pt, 13pt, 14pt, 15pt, 16pt, 17pt, 18pt, 53pt, 60pt, 61pt, 63pt, 79pt, 81pt, 83pt, 84pt, 93pt, 94pt, 95pt, 96pt

## V. No. 39, PERUNGUDI VILLAGE

(Comprising S. F. No. 1 to 179)

S.F. No. 14	Clubbed with S.F. No. 13
S.F. No. 65	Clubbed with S.F. No. 64
S.F. No. 67	Clubbed with S.F. No. 66
S.F. No. 86	Clubbed with S.F. No. 85
S.F. No. <u>97</u>	Clubbed with S.F. No. <u>96</u>
S.F. No. 103	Clubbed with S.F. No. 102
S.F. No. 106	Clubbed with S.F. No. 105
S.F. No. 118	Clubbed with S.F. No. 117
Residential	
PR25	1, 15pt, 16, 17pt
PR26	15pt, 25, 66, 68, 88pt, <u>96pt</u> , <u>108pt</u> , 138pt, 139 pt, 147pt, 172 to 178
Commercial	NIL
Industrial	
IC29	138pt
IC30	24pt, 26pt
Educational	NIL
Public & Semi public	NIL
Agriculture	
Ag32	2, 3, 4pt, 5pt, 10pt, 11, 12pt, 171pt
Ag33	18 to 21, 120 to 122, 124, 125pt, 126pt, 127 to 130, 131pt, 132pt
Ag34	4pt, 5pt, 6 to 9, 10pt, 12pt, 13, 23, 24pt, 26pt, 27, 29 to 39, 42 to 64, 69 to 79, 81 to 85, 87 88pt, 89 to 95, 98 to 102, 104, 107, 108pt, 109 to 117, 126pt, 132pt, 135 to 137, 139pt, 148 to 153, 154pt, 156 to 161, 164 to 170, 171pt, 179
Water bodies	22, 28, 40, 41, 80, <u>96pt</u> , 105, 108pt, 119, 123, 133, 134, 154pt, 155, 162, 163
Transportation	
Existing road	<u>96pt</u> , 140 to 146
Proposed ring road	4pt, 5pt, 10pt, 12pt, 15pt, 17pt, 125pt, 126pt, 131pt, 132pt, 139pt, 147pt, 171pt

## KUDAVASAL TALUK

## V.NO. 61 AMMAYAPPAN VILLAGE

Comprising Survey Nos 1 to 198.

Use Zone	SF. NOS
Residential P.R.1	16pt, 60pt, 74pt, 75pt, 79pt, 80pt, 87, 88pt, 97pt, 100, 103, 104, 109 to 112, 117pt, 118, 119, 121, 123 to 125, 128pt, 131, 135, 137, 138, 139, 142 to 144, 146, 148, 151pt, 152, 153pt, 154pt, 155pt, 156, 157pt, 160pt, 161pt, 162 to 165, 167, 168pt, 171pt, 172, 173pt, 174pt, 175, 176, 177pt, 178pt, 179, 180, 181pt, 182pt, 183, 187, 188pt, 189 to 192, 193pt, 194 to 196.
CS.FNO 188/6,7B , 189/1B S. 189/5(4)6 (5.35AC) Residential use to Educational use G.O NO192 dated 23.11.12	
Commercial C20	128pt, 154pt, 157pt, 171pt, 173pt, 174pt,
Industrial I.C.7	67pt, 150pt,
Educational E6	168pt 188/6,7B 189/5,9
Public & Semipublic P & S9	171pt
Agriculture A.G. 21	1 to 12, 14, 15, 16pt, 18 to 22, 24 to 29, 31 to 38, 39pt, 40 to 59, 60pt, 61, 64 to 66, 67pt, 68, 69, 70pt, 72, 73pt, 74pt, 75pt, 76 to 78, 79pt, 80pt 81, 82, 83pt, 90 to 94, 97pt, 106, 107, 114, 115, 161pt, 177pt, 178pt, 181pt.
Water Bodies	13, 17, 23, 30, 39pt, 62, 63, 70pt, 83pt, 84, 85, 86, 88pt, 98, 99, 101, 102, 105pt, 108pt, 113pt, 116pt, 117pt, 122, 129, 130, 136, 140, 141, 145, 147, 151pt, 153pt, 155pt, 159pt, 160pt, 166, 168pt, 173pt, 182pt 188pt, 193pt, 197, 198.
Transportation Existing Roads	71, 73pt, 87pt, 89, 95, 96, 105pt, 108pt, 113pt, 116pt, 120, 126, 127, 132, 133, 134, 149, 150pt, 154pt, 158, 159pt, 168pt, 169, 170, 177pt, 182pt, 184, 185, 186.

## V.NO. 62 VADAKANDAM VILLAGE

Comprising Survey Nos 1 to 286.

Residential P.R.3	4, 27, 28, 30, 31, 46pt, 60, 61pt, 62, 63, 64, 66 to 69, 70pt, 71 to 77, 78pt, 79 to 84, 85pt, 88, 105 pt, 113, 114, 116, 117pt, 118pt, 119pt
P.R. 4	93pt, 98, 99pt, 149pt, 155pt, 163 to 165, 169pt, 180pt, 181, 183, 184, 199, 209, 210pt, 211, 215, 274pt, 275pt
Commercial	NIL
Industrial	NIL
Educational	NIL
Public & Semipublic	NIL
Agriculture A.G. 21	2, 5 to 26, 32 to 35, 37 to 45, 46pt, 47 to 49, 51, 52, 55, 57, 58, 61pt,
A.G. 25	92, 93pt, 94, 97, 99pt, 100 to 104, 105pt, 107 to 112 118pt, 119pt, 122, 124 to 148, 149pt, 150 to 154, 155pt, 156 to 162, 166, 169pt, 170, 173, 175, 178, 180pt, 182, 183 185, 188, 193 to 198, 200 to 207, 212 to 214, 216 to 237, 241 to 265, 268 to 273, 274pt, 275pt, 276 to 286.
Water bodies	1, 3, 29, 36, 50, 53, 54, 56, 59, 70pt, 78pt, 85pt, 90, 91, 95, 96, 117pt, 123, 174, 176, 177, 191, 208, 210pt, 239, 266, 267
Transportation Ex. Road	65, 86, 87, 89, 115, 120, 121, 167, 168, 171, 172, 179, 186, 187, 189, 190, 192, 238, 240.

106 - Missing

## V.NO. 63 THIRUKKANNAMANGAI VILLAGE

Comprising SF. Nos 1 to 113

Residential P.R. 3	9pt, 13, 28 to 32, 33pt, 34, 35, 36pt, 38, 39, 41pt, 42, 45pt, 46pt, 47, 48, 51, 52, 53, 54, 55, 59pt, 77, 81pt, 82pt, 83pt, 84 to 86, 87pt, 90, 92pt, 95pt, 96, 99pt, 100pt, 101, 112pt, 113pt
Commercial	NIL
Industrial	NIL
Educational	NIL
Public & Semipublic	NIL
Agriculture A.G. 21	1 to 8, 9pt, 10 to 12, 14 to 27 28pt, 56 to 58, 59pt, 60 to 76, 78, 79, 80, 81pt, 83pt, 91, 92pt, 93, 94, 95pt, 97, 98pt, 99pt, 104pt, 105pt, 106, 107, 108, 109pt, 110, 111, 112pt, 113pt.
Water bodies	33pt, 41pt, 45pt, 46pt, 83pt, 87pt, 100pt,
Transportation Existing Road	36pt, 37, 40, 41pt, 43, 44, 48pt, 49, 50 88, 89, 98pt, 99pt, 100pt, 102, 103, 104pt, 105pt, 109pt.

## V.No. 64 AGARATHIRUNALLUR VILLAGE

Comprising Survey No. 1 to 149

Residential PR5	14pt, 44pt, 50pt, 51, 55pt, 67pt, 68pt, 74pt, 75, 79, 80, 81pt, 82 to 94, 125, 131pt, 132, 133, 135, 144pt, 148pt
Commercial	NIL
Industrial	NIL
Education	NIL
Public & Semipublic	NIL
Agricultural	
AG 22	71, 72pt, 73pt, 74pt, 76, 77pt, 78pt, 96 to 102, 103pt, 105pt, 106 to 108, 110 to 121, 123, 124, 126 to 130, 131pt, 140, 144pt, 145pt, 146, 147, 148pt
AG24	1 to 13, 14pt, 17 to 19, 21, 22, 23pt, 24 to 27, 28pt, 29, 30, 31pt, 32pt, 33, 34 35pt, 36pt, 37 to 43, 44pt, 45to48, 49pt, 50pt, 52 to 54, 55pt, 56pt, 57 to 60, 61pt, 62pt, 63 to 66, 67pt, 68pt, 77,
Water Bodies	15, 16, 20, 81pt, 95, 104, 109, 121, 122, 134, 149
Transportation	
EXG. Road	69, 70, 136 to 143,
PRO. Ring Roads	23pt, 28pt, 31pt, 32pt, 35pt, 36pt, 49pt, 56pt, 61pt, 62pt, 72pt, 73pt, 77pt, 78pt, 103pt, 105pt, 145pt.

## V.No. 65 KAATTUR VILLAGE

## Comprising Survey No. 1 to 147

Residential PR5	25, 26pt, 29pt, 32, 35pt, 37, 43, 71pt, 76pt, 77, 78pt, 79pt, 82pt, 83 to 85, 87 to 89, 91, 93, 94, 96pt, 97 to 100, 102 to 105, 107, 109, 110, 111pt, 112 to 116, 120, 121, 141pt, 146
Commercial C23	111pt
Industrial	NIL
Education E1	96pt,
Public & Semipublic P & S13	133
Agricultural AG 24	1 to 6, 8to 24, 26pt, 29pt, 33, 34, 35pt, 38, 41, 42, 44 to 60, 62 to 67, 70, 71pt 72 to 75, 76pt, 78pt, 80pt, 81, 122 to 131, 134 to 140, 141pt, 142, 145
Water Bodies	7, 27, 28, 30, 39, 40, 61, 68, 69, 79pt 106, 132, 143, 144
Transportation EXG. Road	31, 36, 82, 86, 90, 92, 95, 101, 108, 117, 118, 119, 147

80PL - 1402/1403



## V.No. 66 ELAVANGARKUDI VILLAGE

Comprising Survey No. 1 to 182

Residential PR6

100, 102 to 104, 105pt, 106, 110pt,  
 123pt, 124pt, 125pt, 126, 130pt, 131pt, 132pt, 133pt, 135,  
 140, 141, 142, 143pt, 144pt, 145, 146, 147, 149 to  
 155, 157, 158pt, 167, 172, 177pt, 179

P.R. 7

39pt, 40, 41, 43, 49pt, 52pt, 53pt, 66, 72pt,

Commercial

NIL

Industrial

I.C. 9

143pt, 144pt

I.C. 10

101pt

Education

NIL

Public &amp; Semipublic

P &amp; S. 11

177pt

P &amp; S. 12

105pt, 133pt

Agricultural

AG 23

158pt, 159, 160, 162, 165,

AG 24

1 to 3, 5 to 9, 11, 12, 13, 15 to 38, 39pt  
 42, 44 to 48, 49pt, 50, 51, 52pt,  
 53pt, 54 to 61, 63 to 65, 67 to 71, 72pt  
 73 to 83, 85 to 99, 101pt, 108,  
 109, 110pt, 111 to 120, 122, 123pt,  
 125pt, 127 to 129, 130pt, 131pt, 132pt, 143pt, 145pt  
 180 to 182

Water Bodies

4, 10, 14, 62, 84, 107, 121, 124pt, 134, 166,  
 168, 169, 170, 171, 173, 174, 175, 176

Transportation

136 to 139, 148, 156, 161, 163, 164, 178

EXG. Road

V.No. 67 AANAI VADAPATHI VILLAGE

Comprising Survey Nos 1 to 167

Residential	
P.R. 2	1, 3pt, 4, 5, 8pt, 9pt, 15pt, 16, 18pt, 42 to 44, 47pt, 48 to 52, 56, 57, 60 to 69, 72 to 77, 79 to 82, 84, 85pt, 97pt, 98, 106, 114pt, 115, 116 117pt, 118, 119pt, 120, 122pt, 123pt, 125, 127pt, 128, 129pt, 131, 136pt, 137pt, 138 to 142, 143pt, 162,
Commercial	NIL
Industrial	
I.C. 37	133
I.C.38	25pt, 26
Educational	NIL
Public & Semipublic	NIL
Agriculture	
AG 37	8pt, 9pt, 10pt, 11, 13, 14, 15pt, 17, 18pt, 19, 21 to 24, 25pt 28 to 41, 45, 53 to 55, 58, 59, 87, 91pt, 92, 95,
AG 24	96pt, 99 to 102, 105pt, 107, 108pt, 109pt, 110pt, 111pt, 112, 132, 134, 135, 136pt, 137pt, 143pt, 144 to 150 152 to 154, 156, 158 to 161, 163 to 167,
Water Bodies	3pt, 10pt, 70, 71, 78, 83, 85pt, 89, 90, 97pt, 103, 104pt, 113, 114pt, 117pt, 119pt, 121, 122pt, 123pt, 124, 126, 127pt, 129pt, 130, 151, 155, 157
Transportation	
EXG. Road	2, 6, 7, 12, 20, 27, 46, 47pt, 86, 88, 93, 94pt, 143pt, 146pt, 147pt,
Proposed ring road	91pt, 94pt, 96pt, 104pt, 105pt, 108pt 109pt, 110pt, 111pt

V.No. 104 PERUNDARAKUDI VILLAGE

Comprising Survey Nos 1 to 232

Residential

P.R. 27

12pt, 36pt, 45pt, 46pt, 58, 59, 62, 64,  
65, 66, 67pt, 70 to 73, 77, 78, 79pt, 80  
to 85, 87, 88, 90, 91, 92pt, 94, 96, 97, 99,  
100pt, 101 to 103, 107, 129 to 131, 135,  
141pt, 145pt, 152pt, 153, 162pt, 164pt,  
197pt, 203pt, 218pt, 222pt, 224pt

Commercial

C. 21

Industrial I.C. 31

63

109 to 118, 121 to 127, 200pt, 201, 202, 203pt,  
204, 205 to 213

I.C. 32

176

I.C. 33

225pt, 228pt

I.C. 34

137, 138

Educational

66pt

E. 12

Public & Semipublic

NIL

Agriculture

AG 36

5pt, 6, 7, 9, 11, 12pt, 13 to

AG37

22, 23pt, 24pt, 29, 30pt, 31pt, 33, 34, 35pt, 36pt  
1pt, 2 to 4, 5pt, 8pt, 25, 26, 32, 36pt, 37, 38pt

AG35

39 to 44, 45pt, 46pt, 47 to 49, 50pt, 51 to 56, 57pt  
89, 100pt 104, 105, 106, 108, 128, 132 to 134,  
139, 140, 141pt, 142 to 144, 145pt, 146 to  
151, 156 to 159, 161, 163, 164pt, 165  
to 175, 178, 180, 182, 183, 186 to 192, 194,  
195, 197pt, 198, 199, 200pt, 215 to 217, 218pt, 219  
222pt, 223, 224pt, 225pt, 226, 227, 228 pt  
229 to 232.

Water Bodies

1pt, 8pt, 10, 27, 28, 50pt, 57pt, 67pt, 79pt, 92pt  
136pt, 152pt, 154, 155, 160, 162pt, 177,  
179, 181, 184, 193, 196pt, 197pt, 200 pt, 214,  
220, 221.

Transportation

EXG. Road

Railway

Proposed ring road

60, 61, 68, 69, 86, 93, 95, 98, 119, 120

136pt, 184, 185, 196pt.

74, 75, 76

5pt, 8pt, 23pt, 24pt, 30pt, 31pt, 35pt, 36pt

## V.No. 105 DEVARKANDANALLUR VILLAGE

## Comprising Survey Nos 1 to 148

Residential	
P.R. 27	68pt, 69 to 80, 82 to 85, 89 to 93, 115pt, 118, 119, 120pt, 121pt, 123pt, 124, 125, 127, 128, 129, 130pt 131pt, 132pt, 133pt, 139
P.R. 28	2, 24, 27 to 29, 32, 34 to 39, 49 to 51,
Commercial	NIL
Industrial	NIL
Educational	NIL
Public & Semipublic	NIL
Agriculture	
AG 36	3 to 7, 9, 10pt, 11pt, 12, 14pt, 15 to 23, 25, 26, 30, 31, 33, 40 to 42, 43pt, 44 to 48, 57pt, 58pt, 64, 65
AG33	59 - Missing 60pt - M 61pt - M 62pt, 63pt - M 95, 97, 98, 99pt, 100, 101, 103, 104 pt 101, 103, 104pt
AG34	105, 106pt, 107, 108 to 110, 111pt, 112, 113pt, 114, 116pt, 117, 130pt, 131pt, 132pt, 133pt, 134 to 138, 140 to 143, 145 to 148.
Water Bodies	1, 8, 13, 52, 67, 68pt, 81, 94, 102, 115pt, 122, 144,
Transportation	
EXG. Road	86 to 88, 96, 126
Railway	53 to 56, 66
Proposed ring road	10pt, 11pt, 14pt, 43pt, 57pt, 58pt, 60pt, 61pt, 62pt, 63pt, 99pt, 104pt, 106pt, 107pt, 111pt, 113pt, 116pt, 120pt, 121pt, 123pt.

NANNILAM TALUK  
V.No. 102. NILAKKUDI VILLAGE

Comprising Survey Nos 1 to 214

Use Zone	S.F. No
Residential	
PR 9	85pt. 95, 100pt, 107pt, 137, 149pt.
PR10	121pt, 122pt, 126pt, 133pt, 181 to 186, 193pt, 209 to 212
Commercial	NIL
Industrial	NIL
Educational	NIL
Public & Semipublic	NIL
Agriculture	
AG 25	2, 4, <u>9 to 11</u> , 12pt, 13pt, 14, 15, 17 to 19, 21pt, 22pt, 23 to 26, 27pt, 28 to 37, 39 to 45, 49 to 52, 53pt, 54pt, 55, 56pt, 57 to 59, 60pt, 61pt, 62pt, 66 to 70, 72, 73, 76 to 84, 85pt, 86 to 88, 90 to 94, 97, 98, '99, 100pt, 101, 102 103, 106, 107pt, 108 to 120, 121pt, 122pt, 123 to 125, 126pt, 127 to 129, 131, 132, 136, 138, 139, 141 to 148, 149pt, 150 to 180, 187 to 189, 191, 194 to 196, 199 to 202, 204 to 208, 213
Water Bodies	1, 6pt, 7, 8, 16, 20pt, 38, 46, 47, 48, 63, 64, 65, 71, 74, 75, 89, 96, 104, 105, 134, 135, 193pt, 197, 198, 203, 214.
Transportation	
Ex. Road	3, 5, 6pt, 102pt, 130, 133pt, 140, 190, 192
Pro. Ring Road	12pt, 13pt, 20pt, 21pt, 22pt, 27pt, 53pt, 54pt. 56pt, 60pt, 61pt, 62pt

V. No. 103. PERUMPUGALUR VILLAGE

Comprising Survey No 1 to 95

Residential

PR 8 24pt, 26, 40pt, 41, 42pt, 43pt, 82pt, 84, 86pt,

Commercial

NIL

Industrial

IC 12 25pt, 27pt, 28, 29, 30pt, 31pt, 32pt

Educational

NIL

Public & Semipublic

NIL

Agriculture

AG 24 1, 2pt, 3, 4, 5pt, 6pt, 7, 8pt, 9 to 11, 12pt, 13pt,  
14pt, 15pt, 16pt, 17pt, 18 to 21, 22pt, 23pt,  
30pt, 31pt, 32pt, 33 to 39, 40pt, 43pt, 44 to 49, 51 to  
57, 59, 61 to 63, 65, 67 to 81, 82pt, 83, 85,  
86pt, 87 to 89, 91 to 94

Water Bodies

40pt, 42pt, 50, 58, 60, 64, 66, 90, 95

Transportation

Ex. Road

NIL

Pro. Ring Road

2pt, 5pt, 6pt, 8pt, 12pt, 13pt, 14pt, 15pt, 16pt  
17pt, 22pt, 23pt, 24pt, 25pt, 27pt

V. No. 104. VANDAMPALAI VILLAGE

Comprising Survey No 1 to 232

Use Zone

S.F. Nos

Residential

P.R. 10

40pt, 41, 76

P.R. 11

7pt, 17, 19 to 22, 33pt, 35 to 38, 43  
44pt, 46, 47pt, 48, 49pt, 66pt, 67, 68, 69pt  
70, 71, 72pt, 86, 87, 90 to 95, 97, 100pt,  
101pt, 102pt, 106pt,

P.R. 12

128pt, 194pt, 200pt, 201pt

P.R. 13

152pt, 161pt, 186, 188pt

Commercial

NIL

Industrial IC 12

74, 75pt, 77 to 85

Educational E8

75pt

Public & Semipublic

NIL

Agriculture

A.G.25

40pt

A.G.26

3, 4, 6, 7PT, 11, 13, 15, 23 TO 32, 33pt, 34,  
50pt, 51 to 53, 56, 57pt, 59pt

119, 122, 123, 124pt, 125pt, 126pt, 127pt,  
153pt, 154pt, 155 to 157, 158pt, 159 to 160, 161pt, 162pt

163 to 168, 170, 179pt, 180, 181, 182pt, 195, 196pt,  
197 to 199, 200pt, 201pt, 203, 205 to 208, 210 to 232

60pt, 61pt, 62

63pt, 64pt, 65, 66pt, 99, 100pt, 101pt, 102pt,

103 to 105, 106pt, 107, 108, 111 to 117, 118pt,

128pt, 129 to 143, 146 to 148, 150, 151 pt, 172 to 177

A.G.27

## Water Bodies

178pt, 183pt, 184, 185, 187, 189, 190, 191pt, 192pt, 193pt,  
 1, 2, 5, 8, 9, 10, 12, 14, 16, 18pt, 39pt,  
 42pt, 55, 69pt, 72pt, 73pt, 88, 89pt, 96pt,  
 98pt, 106pt, 120, 121, 144, 145, 152pt, 154pt,  
 169, 188pt, 194pt, 202, 204, 209

## Transporation

## EXG Road

18pt, 39pt, 42pt, 45, 73pt, 89pt, 96pt, 98pt,  
 149, 171, 196pt

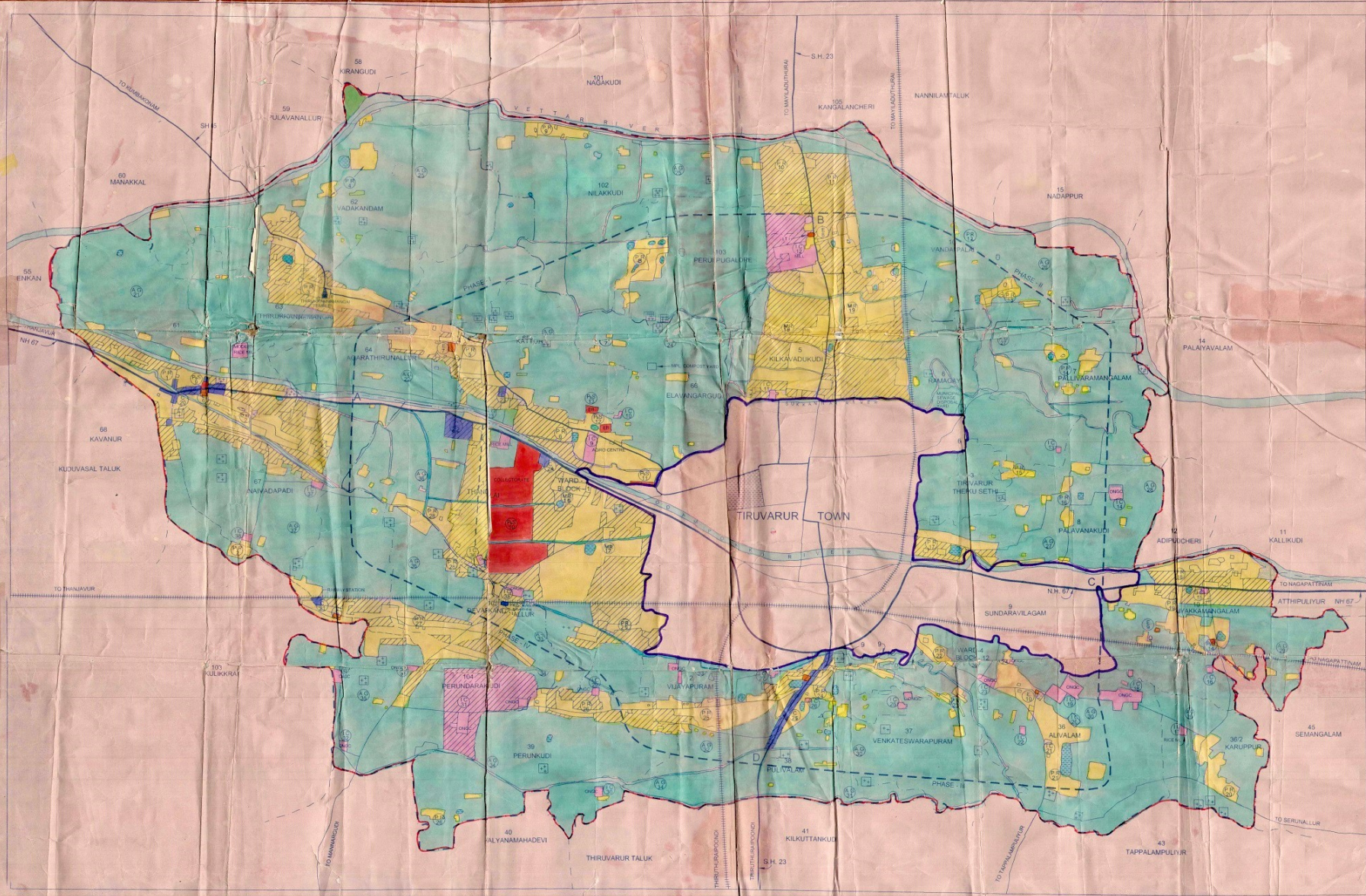
## Pro. Ring Road

44pt, 47pt, 49pt, 50pt, 57pt, 58pt, 59pt, 60pt,  
 61pt, 63pt, 64pt, 118pt, 124pt, 125pt, 126pt  
 151pt, 152pt, 153pt, 158pt, 162pt, 178pt,  
 179pt, 182pt, 183pt, 191pt, 192pt, 193pt,  
 194pt

## Railway

54, 58pt, 109, 110,





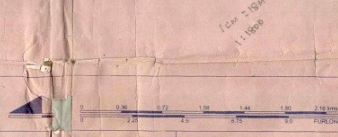
# TIRUVARUR LOCAL PLANNING AREA

## PROPOSED LAND USE

### LEGEND

- LOCAL PLANNING AREA BOUNDARY
- MUNICIPAL BOUNDARY
- TALUK BOUNDARY
- VILLAGE BOUNDARY
- NATIONAL HIGHWAYS
- STATE HIGHWAYS
- DISTRICT ROADS
- OTHER ROADS
- RAILWAY LINE (MG)
- WATER BODIES

- | EXISTING | PROPOSED |
|----------|----------|
|          |          |
|          |          |
|          |          |
|          |          |
|          |          |
|          |          |
|          |          |
|          |          |
|          |          |



DEPUTY SECRETARY  
 LOCAL PLANNING  
 AUTHORITY

DEPUTY SECRETARY  
 TOWN AND COUNTRY PLANNING  
 TIRUCHIRAPPALLI

DEPUTY SECRETARY  
 TOWN AND COUNTRY PLANNING  
 DIVISION

DEPUTY SECRETARY  
 TOWN AND COUNTRY PLANNING  
 DIVISION

DIRECTOR  
 TOWN AND COUNTRY PLANNING  
 DIVISION

DEPUTY SECRETARY  
 HOUSING AND URBAN DEVELOPMENT DEPARTMENT

DIRECTORATE OF TOWN AND COUNTRY PLANNING  
 TIRUCHIRAPPALLI REGION