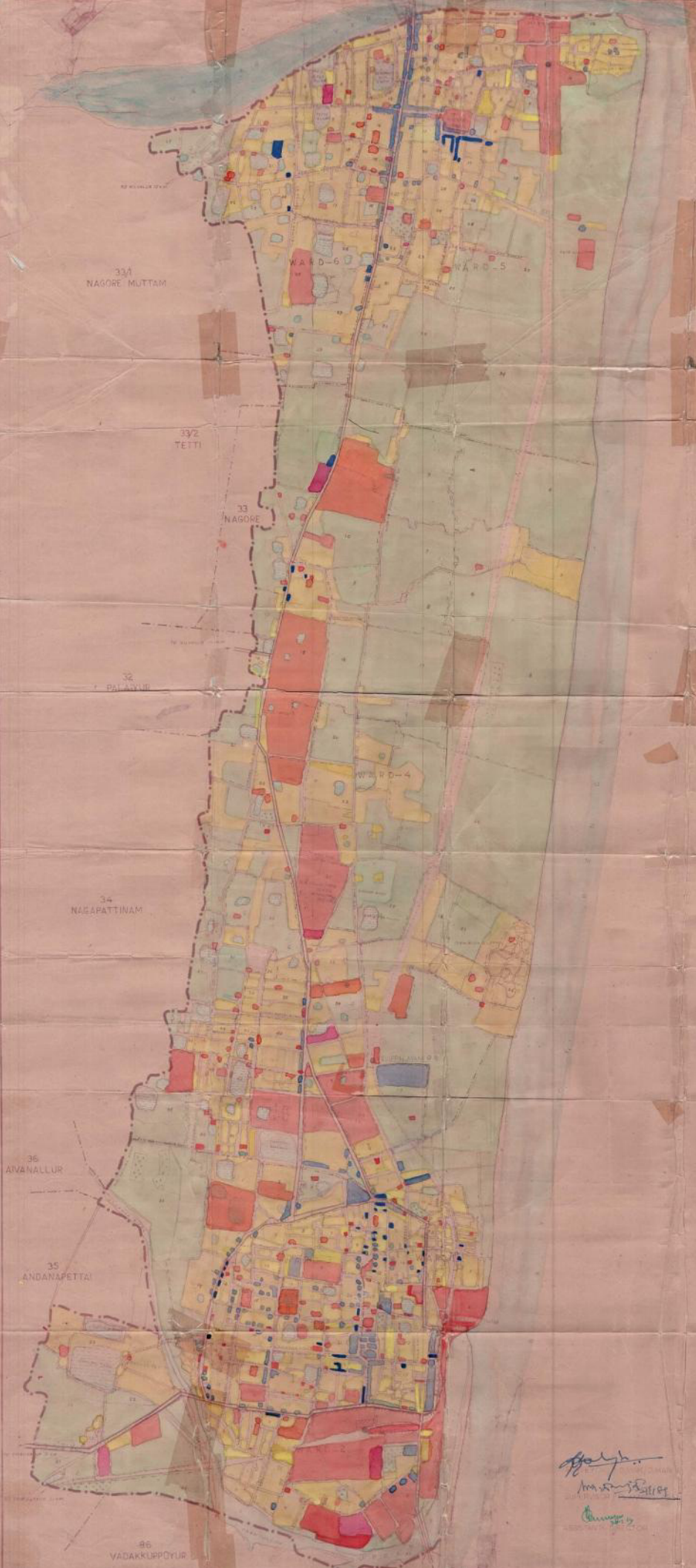


NAGAPPATTINAM
MASTER PLAN
 EXISTING LAND USE



LEGEND

- EXISTING
- RESIDENTIAL
 - COMMERCIAL
 - INDUSTRIAL
 - EDUCATIONAL
 - PUBLIC & SEMI PUBLIC
 - AGRICULTURAL
 - L.P.A. BOUNDARY
 - WARD BOUNDARY
 - BLOCK BOUNDARY
 - STATE HIGHWAYS
 - DISTRICT ROADS
 - MUNICIPAL ROADS
 - WATER BODIES
 - RAILWAY LINE (M.C.)

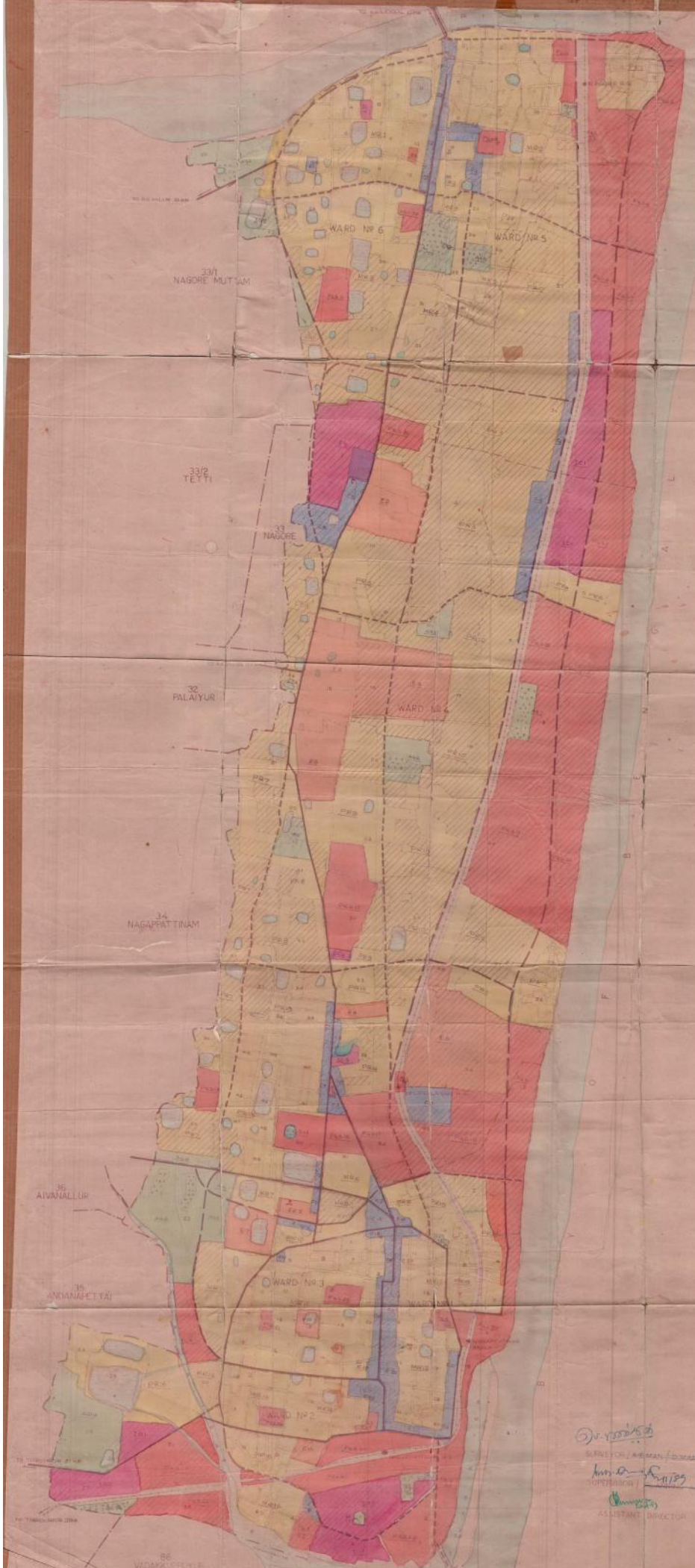
NAGAPPATTINAM LOCAL PLANNING AREA

Handwritten signatures and stamps:
 Director of Town and Country Planning, Tiruchirappalli
 District Director of Town and Country Planning, Tiruchirappalli
 Ramakrishnan, 3/3/61
 Director of Town and Country Planning
 For Commercial and Industrial Development Department
 Planning and Urban Development Department



DIRECTORATE OF TOWN AND COUNTRY PLANNING
 TIRUCHIRAPPALLI - THANJAVUR REGION
 GOVERNMENT OF TAMIL NADU

NAGAPPATTINAM
MASTER PLAN
 PROPOSED LAND USE



LEGEND

EXISTING	PROPOSAL

Handwritten notes in the top right corner, including a date '15.12.2006' and other illegible scribbles.

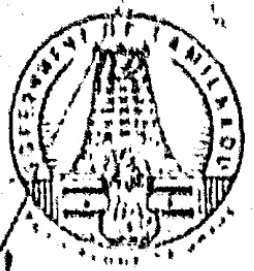
S. V. Srinivasan
 SURVEYOR, AMMAN KODIYER
Amman Kodiyer
 SUPERVISOR
Chinnappa
 ASSISTANT DIRECTOR

Manoj Kumar
 CHIEF EXECUTIVE OFFICER
 TOWN AND COUNTRY PLANNING
 TRICHIRAPPALLI REGION
Ramakrishnan
 DIRECTOR OF TOWN AND COUNTRY PLANNING
 COMMISSIONER AND SECRETARY TO GOVERNMENT
 PLANNING AND TOWN DEVELOPMENT DEPARTMENT



DIRECTORATE OF TOWN & COUNTRY PLANNING
 TRICHIRAPPALLI - THANJAVUR REGION
 GOVERNMENT OF TAMIL NADU

NAGAPPATTINAM LOCAL PLANNING AREA



TAMIL NADU GOVERNMENT GAZETTE

PUBLISHED BY AUTHORITY

No. 11 MADRAS, WEDNESDAY, FEBRUARY 28, 1990
MASI 16, SUKLA, THIRUVALLUVAR AANDU—2921

Part II — Section 2

Notifications or orders of interest to a section of the public
— issued by Secretariat Departments.

CONTENTS.

NOTIFICATIONS BY GOVERNMENT.

	Pages.	Page.
AGRICULTURE DEPARTMENT.		HOUSING AND URBAN DEVELOPMENT DEPARTMENT.
Tamil Nadu Agricultural Produce Markets Act— Vadamadurai Market area—Declared to the notified Market area in respect of paddy, cotton, groundnut, chillies and sugarcane jaggery ..	109-113	Tamil Nadu Town and Country Planning Act— Master Plan for certain Local Planning areas— Approved ..
COMMERCIAL TAXES AND RELIGIOUS ENDOWMENTS DEPARTMENT.		INDUSTRIES DEPARTMENT.
Indian Stamp Act—Provision for consolidation of stamp duty chargeable on share certificates to be issued by Pirmike Housing and Industrial Enter- prises Limited, Madras ..	111	Mineral Concessions Rules—Availability of Certain areas for regrant ..
EDUCATION DEPARTMENT.		LABOUR AND EMPLOYMENT DEPARTMENT.
Anna-Mathal University Act—Nomination of certain persons as Members to:		Minimum Wages Act:
Board of Selection ..	114	Appointment of Committee to hold enquiries and advise to State Government in respect of revising of Minimum rates of wages for employment in Cashew Industry—Amendment to notification ..
Exhibits ..	113-114	Commissioner of Labour and Chief Inspector of Factories to sanction making of complaint— Authorized ..
Synopses ..	114	Minimum rates of wages for employment in Gold articles manufactory—Revised ..
FINANCE DEPARTMENT.		Need and Cess Workers (Conditions of Employ- ment) Act—Cancellation of notifications ..
Howli and Dandarkottal taluks in Dharmapuri District—Declared as Hill Stations and payment of Hill Allowance and Winter Allowance ..	114	Employees Provident Funds and Miscellaneous Provisions Act:
HOME DEPARTMENT.		Exemption of Chola Engineering corpora- tion Limited, Kumbakonam—Cancelled ..
Tamil Nadu Motor Vehicle Taxation Act—Certain Motor Vehicle belonging to Family Planning Assoc- iation of India, Coimbatore—Rule of Taxation ..	114	Employees employed in Industries manu- facturing iron, Ore or salts in Schedule I— Included ..

HOUSING AND URBAN DEVELOPMENT DEPARTMENT

APPROVAL OF MASTER PLAN FOR CERTAIN LOCAL PLANNING AREAS UNDER TAMIL NADU TOWN AND COUNTRY PLANNING ACT.

AMBUR LOCAL PLANNING AREA.

(G.O. Ms. No. 93, Housing and Urban Development, 25th January 1990.)

No. II (2)HOU/1101/90.—In exercise of the powers conferred by sub-section (1) of section 30 of the Tamil Nadu Town and Country Planning Act, 1971 (Tamil Nadu Act 35 of 1972), the Governor of Tamil Nadu hereby publishes the approval of the Government under section 28 of the said Act for Ambur Local Planning Area submitted by the Director of Town and Country Planning.

2. The Master Plan of Ambur Local Planning Area with all its enclosures shall be kept open to the inspection of the public in the office of the Ambur Municipality during office hours.

UDUMALPET LOCAL PLANNING AREA.

(G.O. Ms. No. 133, Housing and Urban Development, 7th February 1990.)

No. II (2)HOU/1101/90.—In exercise of the powers conferred by sub-section (1) of section 30 of the Tamil Nadu Town and Country Planning Act, 1971 (Tamil Nadu Act 35 of 1972), the Governor of Tamil Nadu hereby publishes the approval of the Government under section 28 of the said Act for the Master Plan of Udumalpet Local Planning Area submitted by the Director of Town and Country Planning.

2. The Master Plan for Udumalpet Local Planning Area with all its enclosures shall be kept open to the inspection of the public in the Office of the Commissioner, Udumalpet Municipality during office hours.

VANIYAMBADI LOCAL PLANNING AREA.

G.O. Ms. No. 135, Housing and Urban Development, 7th February 1990.)

No. II (2)HOU/1102/90.—In exercise of the powers conferred by sub-section (1) of section 30 of the Tamil Nadu Town and Country Planning Act, 1971 (Tamil Nadu Act 35 of 1972), the Governor of Tamil Nadu hereby publishes the approval of the Government under section 28 of the said Act for the Master Plan for Vaniyambadi Local Planning Area submitted by the Director of Town and Country Planning.

2. The Master Plan for Vaniyambadi Local Planning Area with all its enclosures shall be kept open to the inspection of the public in the Office of the Commissioner, Vaniyambadi Municipality during office hours.

VIRUDHUNAGAR LOCAL PLANNING AREA.

G.O. Ms. No. 136, Housing and Urban Development, 7th February 1990.)

No. II (2)HOU/1103/90.—In exercise of the powers conferred by sub-section (1) of section 30 of the Tamil Nadu Town and Country Planning Act, 1971 (Tamil Nadu Act 35 of 1972), the Governor of Tamil Nadu hereby publishes the approval of the Government under section 28 of the said Act for the Master Plan for Virudhunagar Local Planning Area submitted by the Director of Town and Country Planning.

2. The Master Plan for Virudhunagar Local Planning Area with all its enclosures shall be kept open to the inspection of the public in the Office of the Commissioner, Virudhunagar Municipality during office hours.

TRODE LOCAL PLANNING AREA.

(G.O. Ms. No. 128, Housing and Urban Development, 7th February 1990.)

No. II (2)HOU/1104/90.—In exercise of the powers conferred by sub-section (1) of section 30 of the Tamil Nadu Town and Country Planning Act, 1971 (Tamil Nadu Act 35 of 1972), the Governor of Tamil Nadu hereby publishes the approval of the Government under section 28 of the said Act for the Master Plan of Trode Local Planning Area submitted by the Director of Town and Country Planning.

2. The Master Plan for Trode Local Planning Area with all its enclosures shall be kept open to the inspection of the public in the Office of the Commissioner, Trode Municipality during office hours.

SRIVILLIPUTHUR LOCAL PLANNING AREA.

(G.O. Ms. No. 139, Housing and Urban Development, 7th February 1990.)

No. II (2)HOU/1105/90.—In exercise of the powers conferred by sub-section (1) of section 30 of the Tamil Nadu Town and Country Planning Act, 1971 (Tamil Nadu Act 35 of 1972), the Governor of Tamil Nadu hereby publishes the approval of the Government under section 28 of the said Act for the Master Plan of Srivilliputhur Local Planning Area submitted by the Director of Town and Country Planning.

2. The Master Plan for Srivilliputhur Local Planning Area with all its enclosures shall be kept open to the inspection of the public in the Office of the Commissioner, Srivilliputhur Municipality during office hours.

MANNARGUDI LOCAL PLANNING AREA.

(G.O. Ms. No. 141, Housing and Urban Development, 9th February 1990, Thal 27, Sukla, Thiruvalluvar Aandu-2021.)

No. II (2)HOU/1106/90.—In exercise of the powers conferred by sub-section (1) of section 30 of the Tamil Nadu Town and Country Planning Act, 1971 (Tamil Nadu Act 35 of 1972), the Governor of Tamil Nadu hereby publishes the approval of the Government under section 28 of the said Act for the Master Plan of Mannargudi Local Planning Area submitted by the Director of Town and Country Planning.

2. The Master Plan for Mannargudi Local Planning Area with all its enclosures shall be kept open to the inspection of the public in the Office of the Commissioner, Mannargudi Municipality during office hours.

NAGAPATTINAM LOCAL PLANNING AREA.

(G.O. Ms. No. 142, Housing and Urban Development, 9th February 1990.)

No. II (2)HOU/1107/90.—In exercise of the powers conferred by sub-section (1) of section 30 of the Tamil Nadu Town and Country Planning Act, 1971 (Tamil Nadu Act 35 of 1972), the Governor of Tamil Nadu hereby publishes the approval of the Government under section 28 of the said Act for the Master Plan of Nagapattinam Local Planning Area submitted by the Director of Town and Country Planning.

2. The Master Plan for Nagapattinam Local Planning Area with all its enclosures shall be kept open to the inspection of the public in the Office of the Commissioner, Nagapattinam Municipality during office hours.

SCHEDULES

1494

SCHEDULE
AREA INCLUDED UNDER DIFFERENT USE ZONE
PRIMARY RESIDENTIAL

Code No.	Ward No.	Block No.	T. S. Nos.	
PR 1	5	10	970 - 975	
		11	Entire Block	
		12	1006 - 1054, 1057, 1063, 1070 - 1080	
PR 2	5	27	2971 - 2993, 2200 part 2201 - 2209	
		33	2380, 2381, 2389 - 2391 2393, 2394	
		34	2395 part	
PR 3	4	2	13 - 30, 33 - 53, 54 part	
		3	Entire-Block	
		4	101 - 108, 109 part 112 - 124, 125 part	
		6	177 - 183, 184 part 185 - 191, 192 part 193 part, 194 part 195, 196 part, 197 198	
		7	Entire Block	
		9	317 part	
		5	33	2382, 2383, 2385 - 2387
		34	2395 part	
		11	342 part, 343, 348 - 355, 357 - 363	
		13	Entire Block	
PR 4	4	14	Entire Block	
		9	285 - 307, 309 - 316 317 part	
		10	318 - 328, 329 330 - 336, 337 part 339	
PR 5	4	12	364 - 424	
		5	Entire Block	
PR 6	4	6	138	
		15	452	
		21	670 - 682, 685 - 700	
		22	710 - 715	
		43	2317 - 2339	
		44	2382 - 2424	
		45	Entire Block	
		46	2544 - 2550, 2551 part	
		55	2900 part, 2903	
		56	Entire Block	
		82		

Note

10 No 30 H E VC
 11.2.09
 13-22, TSC
 -10572

PRIMARY RESIDENTIAL

Code No.	Ward No.	Block No.	T. S. Nos.
PR 8	4	57	
		21	703
		22	704, 705 p, 706, 707, 708
		31	1282 p, 1283 p, 1284 - 1289
		32	1290 - 1298, 1230 part
		37	1679, 1682, 1683
PR 9	4	16	511, 512
		20	659 - 664
		22	736, 737
		23	749 - 788, 796, 799
		31	1273 - 1280
		33	1302 part
			1327, 1328, 1329
PR 10	4	6	142 - 144
		8	246 - 252, 254 part
			255 - 265, 274 - 276, 278 - 283
		17	516 - 525, 556, 557 part
			559 part, 560, 561 part
			562 - 602
		19	622 - 643
		20	656
		23	800 - 806
		24	807 - 841
		28	1237 - 1240
		29	1242 - 1261
		27	1185 - 1590, 2950
28	1191 - 1213, 1214 part		
PR 11	4	25	Entire Block
PR 12	4	26	Entire Block
		27	1156 - 1184
PR 13	4	32	1299, 1300
		35	1475 - 1517, 1533 - 1611
			1613, 1614, 1632 - 1654
		36	Full
		37	1677, 1678, 1680, 1681
			1684 - 1695
	38	Full	
	39	"	
	40	1849 - 1879, 1898 - 1998, 1999 - 2089	
		1494	
		83	

PRIMARY RESIDENTIAL

Code No.	Ward No.	Block No.	T. S. Nos.
PR 13	4	41 ✓	2132 - 2175, 2181 - 2220 ✓
		42 ✓	Full ✓
		43 ✓	2242 - 2315 ✓
		44 ✓	2342 - 2381, 2425 - 2509 ✓
		46 ✓	2554 - 2597 ✓
		47 ✓	Entire Block ✓
		48 ✓	-do- ✓
		49 ✓	-do- ✓
		50 ✓	2782 - 2802 ✓
		PR 14	4
33 ✓	1302 part, 1304 - 1325 ✓		
34 ✓	1331, 1332, 1333 - 1360 ✓		
	1377 part, 1378 part ✓		
	1388 - 1390, 1391 part ✓		
	1392 part, 1393 part ✓		
	1405, 1429 - 1452, 1457, ✓		
	1458 ✓		
54 ✓	2882 - 2885 ✓		
PR 15	1		
			125 - 126, 127 part ✓
			128, 129 part ✓
		3 ✓	Entire Block ✓
		4 ✓	150 - 153, 155 - 355 ✓
		5 ✓	361 - 403 ✓
		7 ✓	Entire Block ✓
		8 ✓	676 - 745 ✓
		9 ✓	Entire Block ✓
		10 ✓	Entire Block except 825 ✓
PR 16	2	22 ✓	1566 - 1571 ✓
		24 ✓	1626 - 1635, 1637 - 1639, ✓ 1641 part, 1642 part, 1643, ✓ 1644 part, 1645 - 1648 ✓

Note

AREA INCLUDED UNDER DIFFERENT USE ZONE
MIXED RESIDENTIAL

Code No.	Ward No.	Block No.	T. S. Nos
MR 1	6	2	Entire Block
		3	Entire Block
		4	Entire Block except 200, 220 - 225
		✓ 5	Entire Block
		6	"
		7	"
		8	"
		9	"
		10	"
		11	"
		12	565 - 575, 583, 594 - 605 625 - 628, 633 part 635 part, 636 - 641 642 part, 649 - 651 656 - 658
		13	661 part, 667 - 670 675 - 679, 680 part 681 part, 704 - 741
14	744 - 767, 787 - 813 819 - 826, 830		
✓ 15	849 - 879, 885 part 886 part, 888, 889 897 - 903		
18	Entire Block		
19	"		
20	1265 - 1287 1288 part, 1289 - 1317		
✓ 21	Entire Block		
22	1367 - 1369, 1370 part 1371, 1372 part, 1376 - 1385		
MR 2	5	1	7, 33 - 78
		2	Entire Block
		3	"
		4	"
		✓ 5	326 - 342, 353, 355, 356 - 358, 362, 363, 369 - 372, 375, 381 - 403
		6	493 - 495, 497 - 535
		7	562 - 695
		8	Entire Block
		9	" except 933 part
		15	"
16	"		
85			

-1494-

Code No.	Ward No.	Block No.	T. S. Nos.
----------	----------	-----------	------------

		17 ✓	1215 - 1276, 1278, 1281, / 1282, 1285 - 1328, 1344, 1351 1356, 1371, 1385 ✓
		18 ✓	1387 - 1398 ✓
		19 ✓	1502 part. 1503 part. 1512 - 1544 1548 - 1550, 1614 - 1618 1620 - 1622, 1626 - 1638
		20 ✓	1705 - 1749, 1769 - 1773 ✓
MR 3	6	16 ✓	972 - 1073
		17 ✓	Entire Block
		23 ✓	-do-
		24 ✓	-do-
		25 ✓	1468 part. 1469 - 1482, 1483 part, 1484 - 1486, 1488 - 1490, 1492 part, 1493 - 1497
		26 ✓	Entire Block
		27 ✓	-do-
		28 ✓	Entire Block
MR 4	5	21 ✓	1775 - 1794, 1814 - 1823 1831 part. 1841, 1846 part ✓
		22 ✓	1907 - 1937 ✓
		23 ✓	1942 - 1951, 1954 - 1956, 1960, 1961, 1964, 1966 - 1990
		24 ✓	2060 - 2062, 2066 - 2069 2070 part. 2073, 2074, 2077-2079, 2085, 2086, 2089, 2092, 2093
		25 ✓	2098 - 2125
		30 ✓	2269 - 2274 ✓
		31 ✓	Entire Block ✓
		32 ✓	-do-
MR 5	5	23 ✓	1992 - 2024
		24 ✓	2028 - 2030, 2032 - 2057
		25 ✓	2127 - 2145
		26 ✓	Entire Block
		28 ✓	-do-
		29 ✓	-do-
		30 ✓	2261 - 2268
MR 6	4	51 ✓	2808 - 2828
MR 7	3		2831 - 2835
	3	1 ✓	3 - 24 ✓
	3	2 ✓	46 - 50 ✓
	3	3 ✓	102, 104 - 135, 137 - 139, 141 - 145, 147 - 155, 157, 158
Note	1	1 ✓	1 - 66, 82, 83, 101 - 115

Code No. Ward No. Block No. T. S. Nos.

MR 10 3

1. 41, 44

2. 79 part. 80 part. 81-88, 90, 91, 96

2 974-982, 983 part, 984, to 989.

991, 992 part. 993 part 994-1013

MR 11 3

4. 162, 169, 179 - 195, 207 - 225, 230 - 232, 240

5. 301 - 372, 395 - 404

6. 406 - 411, 413 - 459

7. Entire Block

8. "

9. 693 - 728, 739 - 753

10. Entire Block

11. -do-

13. -do-

14. -do-

15. 1191 - 1290

16. Entire Block

17. 1426 - 1483, parts of 1484 - 1487
1495 - 1513, 1515 - 1556

18. 1582 - 1595

19. Entire Block

20. 1729 - 1735, 1745 - 1754
1765 - 1774, 1779, 1786-1800

21. 1820 - 1906

1. 6. 419 - 431

MR 12 1

11. 851 - 920, 922, 925-929, 940-946
949-951, 954, 955, 960-962, 965-969, 972, 973, 975, 976,
980 - 983

12. 987-989, 997-1001, 1031-1041

13. Entire Block

14. 1187 - 1197, 1200 - 1224

15. 1226 - 1234

16. 1601 - 1740, 2255

99

1494

87

Code No.	Ward No.	Block No.	T. S. Nos.
MR 12	1	17	Entire Block
		19	1872 - 1947
		20	1948 - 1962, 1967 - 1980, 1998 - 2033
		21	2057 - 2144
		20 ✓	1423-1442, 1443 part, 1444-1517
MR 13	2	21 ✓	1518 - 1543 ✓
		12 ✓	585, 587 - 651 ✓
MR 14	2	14 ✓	Entire Block ✓
		15 ✓	-do- ✓
		16 ✓	1055 - 1129 ✓
		17 ✓	Entire Block ✓
		18 ✓	-do- ✓
		19 ✓	-do- ✓
		8 ✓	-do- ✓
		9 ✓	-do- ✓
		10 ✓	530 - 532, 536 - 561
MR 16	2	4 ✓	64 - 74, 104, 116 - 124 132 - 134, 135 part
		6 ✓	Entire Block
		7 ✓	Entire Block except Railway land

Note 2

COMMERCIAL

Code No.	Ward No	Block No	T. S. Nos
C 1	6	20	1288 part
C 2	6	✓12	576-582, 584-593, 606-624, 629-632, 633 part, 634, 635 part
		13	642 part, 643-648, 652 - 655
		14	661 part, 662-666, 671-674, 680 part, 681 part, 682-703
		✓15	768-786, 827-838, 842-847
		16	880-884, 885 part, 886 part, 887, 890 - 896
		16	905 - 912, 932 - 934
		1	1 - 6, 8 - 32
C 3	5	5	343-352, 354-356, 359-361, 364-368, 373, 374, 376-380
		6	404-459, 461-492, 496, 536-554
		7	558 - 561
		✓17	1277, 1279, 1280, 1283, 1284, 1329-1343, 1345-1350, 1352-1355, 1357-1370, 1372-1384
		18	1399 part, 1401-1417
		19	1421-1501, 1502 part, 1503 part, 1504-1511, 1545-1547, 1551 1583, 1585-1613, 1617-1619, 1623-1625, 1639-1642
		20	1647-1698, 1700-1704, 1750-1764, 1766-1768
		✓21	1824-1830 1831 part, 1832-1837, 1838 part, 1839, 1840, 1842-1845
		4	110, 111, 125 part, 126, 127, 159 part
		C 4	4
✓27	2200 part		
34	2395 part -		
C 5	4	✓1	8 part
		11	340 part, 341, 345 part, 346
C 6	2	3	60 p.
		11	564 part
C 7	2	11	1460-1474, 1518-1532, 1615-1625, 1627-1631
		35	1615-1625, 1627-1631
	4		-1631 -1487, 1488-1494,
		89	9, 533 - 535

Code No.	Ward No.	Block No.	T. S. Nos
		40 ✓	1880-1887, 1889-1897, 1982-1997, 2090-2105 ✓
		41 ✓	2107-2131, 2176-2180
C 8	4	34 ✓	1432, 1435 part
			part
			1436-1452, 1361-1376, 1377 part, 1378 part, 1379-1387, 1391 part, 1392 part, 1393 part, 1394-1404
C 9	4	51 ✓	2837-2849, 2850 part 2851-2853
C 10	4	53	2865 ✓
C 11	4	50 ✓	2779 part
C 12	3	2 ✓	51-64, 66, 67, 69, 71
C 13	4	51 ✓	2830 ✓
C 14	3	2	part of 79, 80, 89, 92-95, 97-99
C 15	3	3 ✓	103 ✓
		4 ✓	161, 163 ✓
C 16	1 ✓	1 ✓	67-81, 84-100
C 17	3	9	729 ✓
C 18	3	4	165-168, 170 178, 196-206, 226-229, 231, 233-239, 241-246
C 19	3	4 ✓	247, 258 ✓
		5 ✓	264-300, 373-394 ✓
		20 ✓	1736-1744, 1755-1764, 1775-1778, 1780-1785
C 20	1	21 ✓	1802-1810, 1812-1819, 1907-1952
		11 ✓	923, 924, 930-939, 947, 948, 952, 953, 956, 958, 959, 963, 964, 970, 971, 974, 977-979, 984, 985
		12 ✓	990-996, 1002-1006, 1008-1015, 1017-1030
		15 ✓	1235-1273
		16 ✓	1275-1284, 1286-1315, 1317-1355, 1357-1385, 1424-1490, 1492-1542, 1544-1563, 1565-1596
C 21	1	21 ✓	2145-2185, 2187-2224
	1	18 ✓	1837-1845, 1847, 1848
		19 ✓	1864-1866, 1868-1871
		20 ✓	1963, 1966/1
		21	1982-1991, 1993-1997
	2	12 ✓	2034-2056
		13 ✓	654 - 703
		2 ✓	Entire Block
			12 part ✓

Note 2

C 23 - 2

INDUSTRIAL

Code No.	Ward No.	Block No.	T. S. Nos
CONTROLLED INDUSTRIES			
IC 1	4 ✓	4 ✓	130 - 132
	5 ✓	34 ✓	2397
IC 2	4 ✓	30 ✓	1268 part
IC 3	4 ✓	34 ✓	1406 - 1428 ✓
IC 4	6 ✓	4 ✓	200, 220 - 225
GENERAL INDUSTRY			
IG 1	2 ✓	22 ✓	1550-1554, 1558 part
IG 2	2 ✓	22 ✓	1560 part ✓
		27 ✓	Entire Block except Railway land
IG 3	2 ✓	2 ✓	11, 12 part, 13 part, 14-16, 17 part, 18
		3 ✓	57, 58, 59 part, 60 part
		11 ✓	563-565, 566 A & B ✓
			1571-1768 (Railway workshop)
IG 4	2 ✓	3 ✓	26 - 55 ✓
		29 ✓	1712
SPECIAL AND HAZARDOUS INDUSTRY			
IS	4 ✓	1 ✓	2 - 7, 8 part

EDUCATION

Code No.	Ward No.	Block No.	T. S. Nos.
E 1	6 ✓	14 ✓	814 - 818, 840, 841
E 2	4 ✓	2 ✓	12, 31, 32 ✓
		10 ✓	337 part, 338
E 3	4 ✓	12 ✓	425 - 426 ✓
		15 ✓	Entire block except the Zone PR 7 part (454 to 480)
		16 ✓	482-496, 498-509, 513, 514
		17 ✓	526-555, 557 part, 558, 559 part, 561 part ✓
		21 ✓	666, 667, 669
		22 ✓	738 - 747 ✓
E 4	4 ✓	34 ✓	1332, 1453 - 1456 ✓
E 5	4 ✓	28 ✓	1214 part, 1217-1219 ✓
		54 ✓	2869, 2870, 2871 part, 2872, 2873, 2875-2877, 2888-2890, 2891 part ✓
E 6	3 ✓	2 ✓	74 - 77 ✓
E 7	3 ✓	1 ✓	26 - 30 ✓
E 8	3 ✓	18 ✓	1558 - 1581 ✓
E 9	3 ✓	17 ✓	part of 1484-1487, 1488-1494, 1514 ✓
E 10	2 ✓	10 ✓	515 - 529, 533 - 535 ✓

PUBLIC AND SEMI PUBLIC

Code No.	Ward No.	Block No.	T. S. Nos
P & S 1	5	9,10, 15	Block 9 part Block 10 part Block 15 part
P & S 2	5	18	557, 1399 part
P & S 3	5	10, 14	968, 969 1081, 1085 part
P & S 4	5	12, 13, 14	1014-1039, 1055, 1056, 1058-1062, 1064-1069 1081, 1082 1083
P & S 5	6	25	1492 part
P & S 6	5	27	2195, 2198
P & S 7	4, 5	4, 27, 34	133 2196, 2197 2398
P & S 8	4	2	54 part
P & S 9	4	18	605-613, 614 part, 616/P
P & S 10	4	18, 24	614 part, 615 parts of 856-859, 860, 861, 863 part
P & S 11	4	18	603 part, 614 part, 616 part, 617, 618, 845-855
P & S 12	4	24, 23, 29, 30	Parts of 856-859, 862, 863 part ? 790 - 795 1263, 1264 1266, 1267, 1268 part, 1271
P & S 13	4	55	2902
P & S 14	4	50	2779 part, 2780, 2805
P & S 15	4	34	1389
P & S 16	4	51	2836
P & S 17	4	52	Entire Block
P & S 18	4	53, 54	2867, 2868 2869, -2870, 2871 part, 2872, 2873
	1	2	129 part
P & S 19	1, 4	4, 54	154 part 2871 part, 2891 part, 2893, 2894
	1	4	357, 358
	1	5	405-409
		2	127, 129 part

Code No.	Ward No.	Block No.	T. S. Nos
P & S 20	3 ✓	12 ✓	983 part, 990 ✓ 992 part, 993 part ✓
P & S 21	3 ✓	15 ✓	1291 - 1293 ✓
P & S 22	3 ✓	6 ✓	part of Block 6
P & S 23	1 ✓	6 ✓	433 - 437
P & S 24	2 ✓	14	1198, 1199
P & S 25	2 ✓	16 ✓	1050 - 1054
P & S 26	2	12 ✓	Block 12 part ✓
P & S 27	2	22	1560 part, 1562 part ✓
b & S 28	2	28	1710 ✓
		4 ✓	62, 135 part ✓
		2	23, 24 ✓
		6 ✓	410, 411/2, 412/2 a ✓
		18 ✓	413, 416, 417 ✓
			1852/1, 1853-1859 ✓
			1860/1, 1862 ✓
P & S 29	2 ✓	1 ✓	1, 6, 7 ✓
		2 ✓	8, 9 ✓
P & S 30	2 ✓	1 ✓	3 - 5 ✓
		10 ✓	562 ✓
		11 ✓	567 - 583 ✓
P & S 31	4 ✓	54 ✓	2880 part
P & S 32	6 ✓	16 ✓	968 to 971
P & S 33	5	10 ✓	955, 967, 969, 975 part

AGRICULTURE

Code No.	Ward No	Block No.	T. S. Nos
AG 1	6 ✓	1 & 29 ✓	Entire Block
AG 2	6	22 ✓	1370 part, 1372 part, 1374, 1375, 1387-1397, 1400-1401, 1403-1405
AG 3	5	21 ✓ 22 ✓ 23 ✓ 24 ✓	1795-1808, 1810-1813, 1838 part 1848 - 1906 1939-1941, 1952, 1953, 1957-1959, 1962-1963, 1965 2063-2065, 2070 part, 2071, 2072, 2075, 2076, 2080-2084, 2087, 2088 2090, 2091, 2094, 2095
AG 4	5	23 ✓ 24 ✓	2025, 2026 2027, 2031 ✓
AG 5	4 ✓	8 ✓	253, 254 part, 266-273, 277
AG 6	4 ✓	20 ✓	644 - 655 ✓
AG 7	4	18 ✓	603 part, 604 ✓
AG 8	3	22 ✓	Part of Block 22 ✓
	4	26 ✓	2551 part ✓
		55 ✓	2899, 2900 part ✓
AG 9	3	22 ✓	Part of Block 22 ✓
		1 ✓	1 & 2 ✓
AG 10	2 2	22 ✓ 24 ✓ 25 ✓ 26 ✓	1556, 1558 part 1641 part, 1642 part Entire Block ✓ -do- ✓
AG 11	6 ✓	25	1468 part, 1483 part
AG 12	4 ✓	22 ✓	705 part, Residential
	4 ✓	31 ✓	1282 part, 1283 part
AG 13	5	9	933 part
AG 14	1	10	825
AG 15	1	16	
AG 16	2	41 ✓	13 part, 17 part
AG 17	2	3	59 part ✓
AG 18	2 ✓	28 ✓	1709 ✓